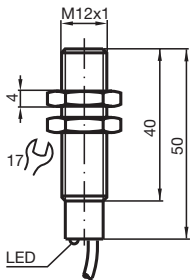


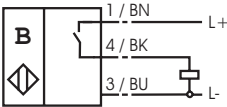
Comfort series  
60 mm embeddable  
Basic series  
60 mm embeddable



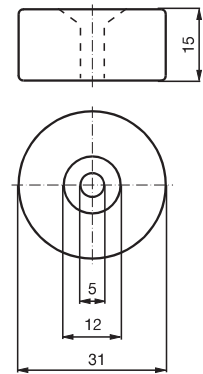
Switching element function	PNP	Make function
Rated operating distance $s_n$	60 mm	
Installation	embeddable, in non-magn. metal	
Assured operating distance $s_a$	10 ... 48,6 mm	
Operating voltage $U_B$	10 ... 30 V	
Switching frequency $f$	0 ... 5000 Hz	
Reverse polarity protection	Protected against reverse polarity	
Short circuit protection	pulsing	
Voltage drop $U_d$	$\leq 1,5$ V	
Operating current $I_L$	0 ... 300 mA	
No-load supply current $I_0$	$\leq 10$ mA	
Indication of the switching state	LED, yellow	
Standards	EN 60947-5-2	
Ambient temperature	$-25 \dots 75 \text{ }^\circ\text{C}$ (248 ... 348 K)	
Connection type	2 m, PUR cable	
Core cross-section	0.25 mm <sup>2</sup>	
Housing material	brass, nickel-plated	
Sensing face	PA	
Protection degree	IP67	

Connection\_type:

E2



Magnet DM 60-31-15



Magnet DM 25-32-07

