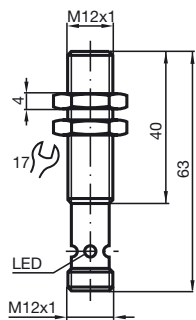
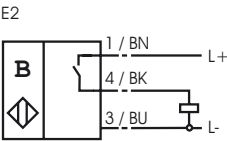


Comfort series  
60 mm embeddable

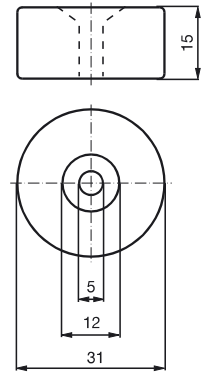


General specifications	
Switching element function	PNP      Make function
Rated operating distance $s_n$	60 mm
Installation	embeddable, in non-magn. metal
Assured operating distance $s_a$	10 ... 48.6 mm
Nominal ratings	
Operating voltage $U_B$	10 ... 30 V
Switching frequency $f$	0 ... 5000 Hz
Reverse polarity protection	Protected against reverse polarity
Short-circuit protection	pulsing
Voltage drop $U_d$	$\leq 1.5$ V
Operating current $I_L$	0 ... 300 mA
No-load supply current $I_0$	$\leq 10$ mA
Indication of the switching state	Multihole-LED, yellow
Standard conformity	
Standards	EN 60947-5-2
Ambient conditions	
Ambient temperature	-25 ... 75 °C (248 ... 348 K)
Mechanical specifications	
Connection type	V1-connector
Housing material	brass, nickel-plated
Sensing face	PA
Protection degree	IP67

Connection type:



Magnet DM 60-31-15



Magnet DM 25-32-07

