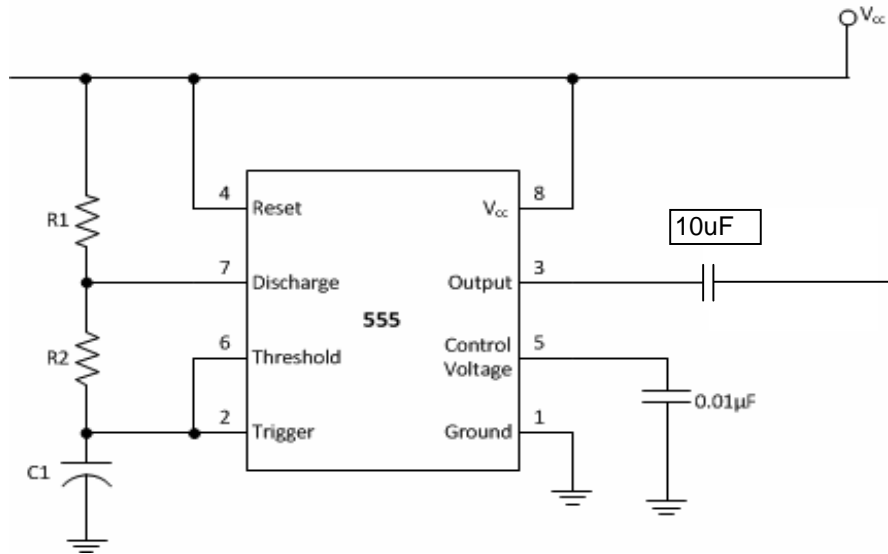
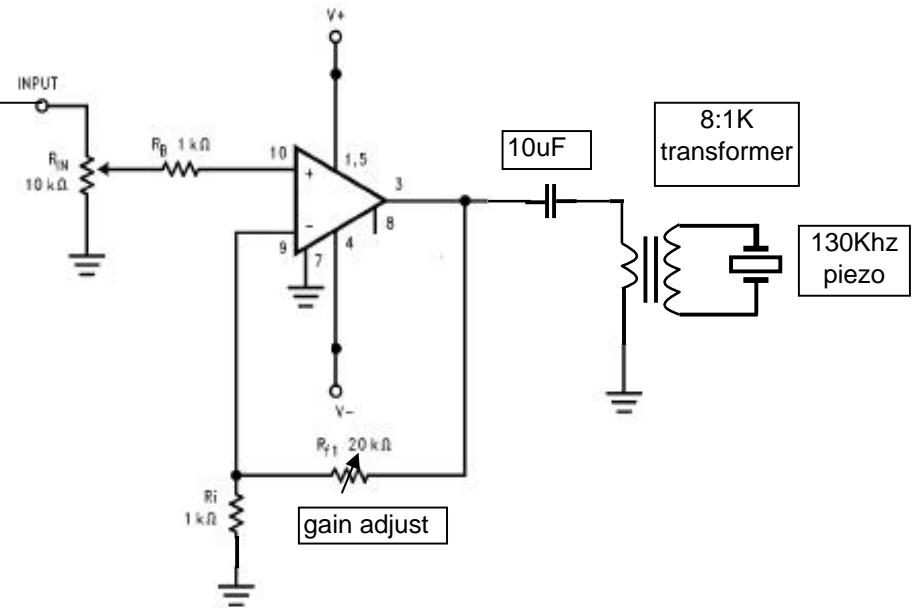


### 555 Timer Oscillator - 130Khz



### LM386 Amplifier



C <sub>1</sub>	R <sub>1</sub>	R <sub>2</sub>	Freq.	Duty Cycle
0.001 µF	1 KΩ	5.1 KΩ	128839 Hz	54.5 %

For variable frequency use potentiometers for R1 and R2