

DASH #	VOLTAGE (V)	COIL @25°C (CLASS C)
-1	5	30Ω
-2	12	225Ω
-3	24	360Ω

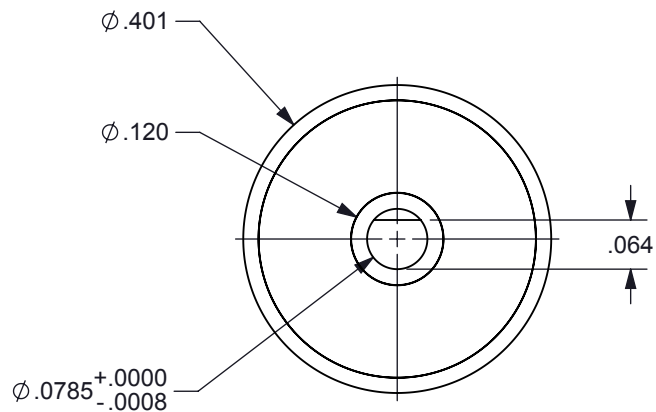
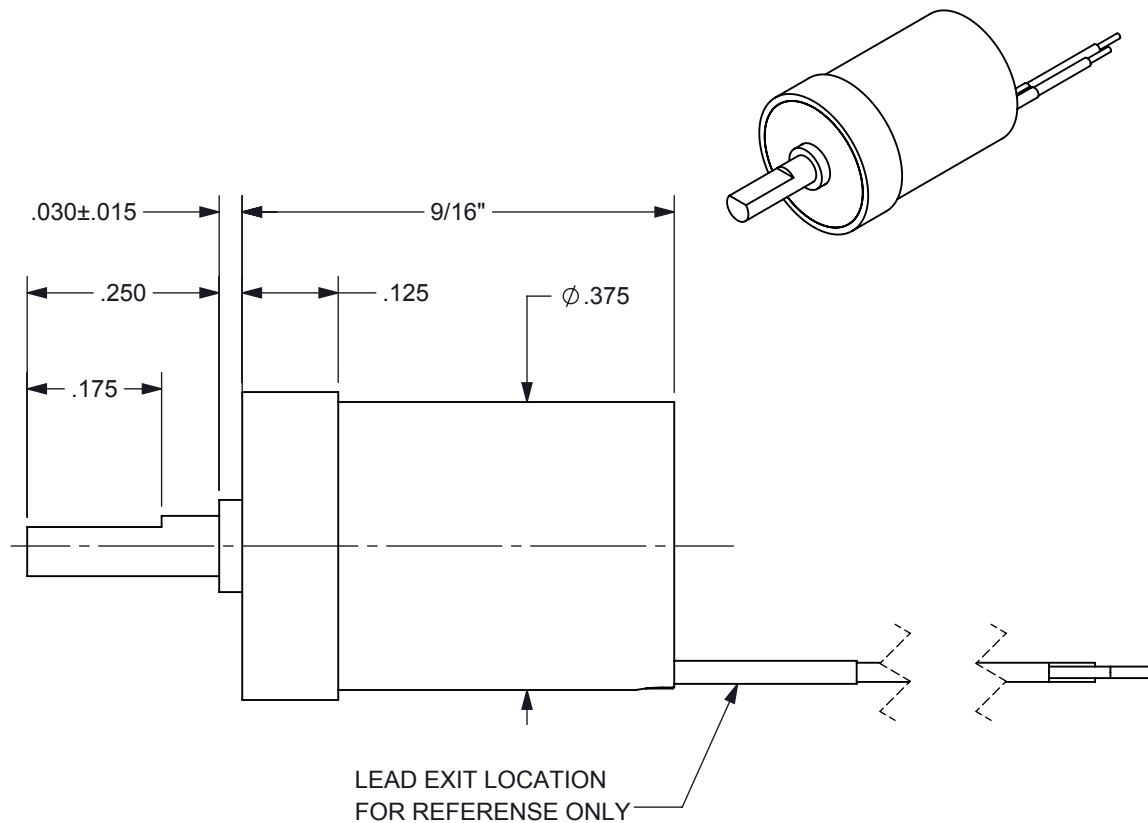


FIGURE 1



SPECIFICATIONS

- | | |
|--------------------|--|
| 1. PRODUCT TYPE | BI-STABLE SOLENOID |
| 2. TEMPERATURE | -40°C TO +65°C OPERATING RANGE |
| 3. TRAVEL | 45 ± 2° CW FROM POSITION SHOWN IN FIGURE 1 |
| 4. ROTATION | CW / RED (+) BLACK (-) |
| 5. VOLTAGE | SEE CHART ABOVE |
| 6. COIL | SEE CHART ABOVE |
| 7. LEADS | RED AND BLACK 30 ET TEFLON INSULATED WIRE PER M16878/6 |
| 8. LEAD LENGTH | 12" MIN STRIPPED AND TINNED 1/4" ± 1/8" |
| 9. HOUSING MARKING | BRANDSTROM, P/N DATE CODE |
| 10. HOUSING FINISH | BLACK ANODIZE PER MIL-A-8625F, TYPE II, CLASS II |

PROPRIETARY DOCUMENT

DIMENSION TOLERANCES UNLESS OTHERWISE SPECIFIED				Brandstrom Instruments		
ANGLES	± 1°	2 PLACES	±.010			
FRACTIONS	± 1/32	3 PLACES	±.005			
1 PLACE	± .015	4 PLACES	±.0005			
MATERIAL:		SEE SPECS		DRAWN: P.T.		
FINISH:		SEE SPECS		CHECKED: C.N.M.		
DATE:	04/07/14	SCALE:	NONE	APPROVED: T.G.A.		
TITLE:		BI-STABLE SOLENOID		DWG NO:	A1269	SHEET: 1 of 1
						REV: A