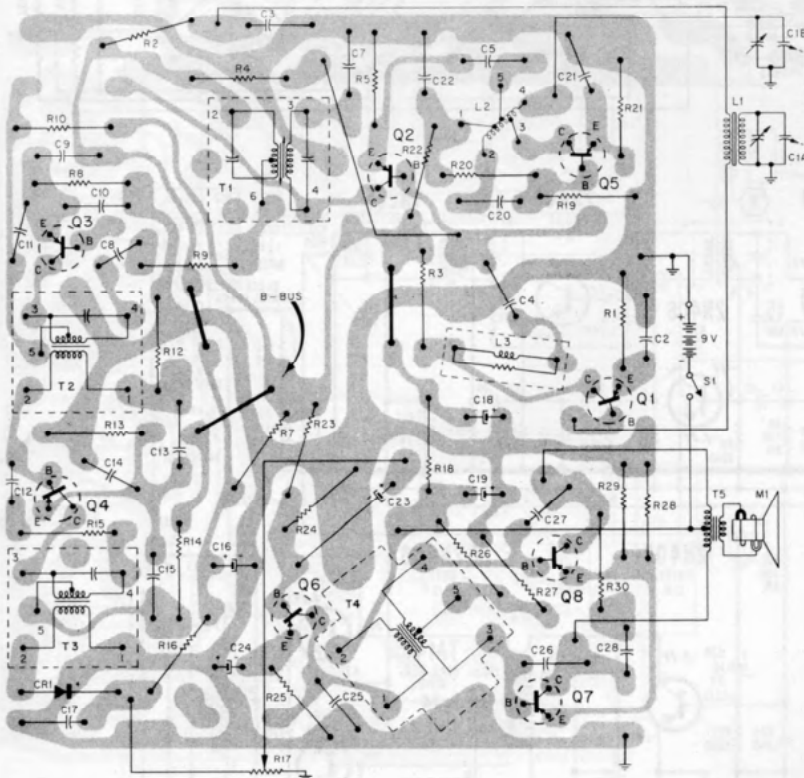
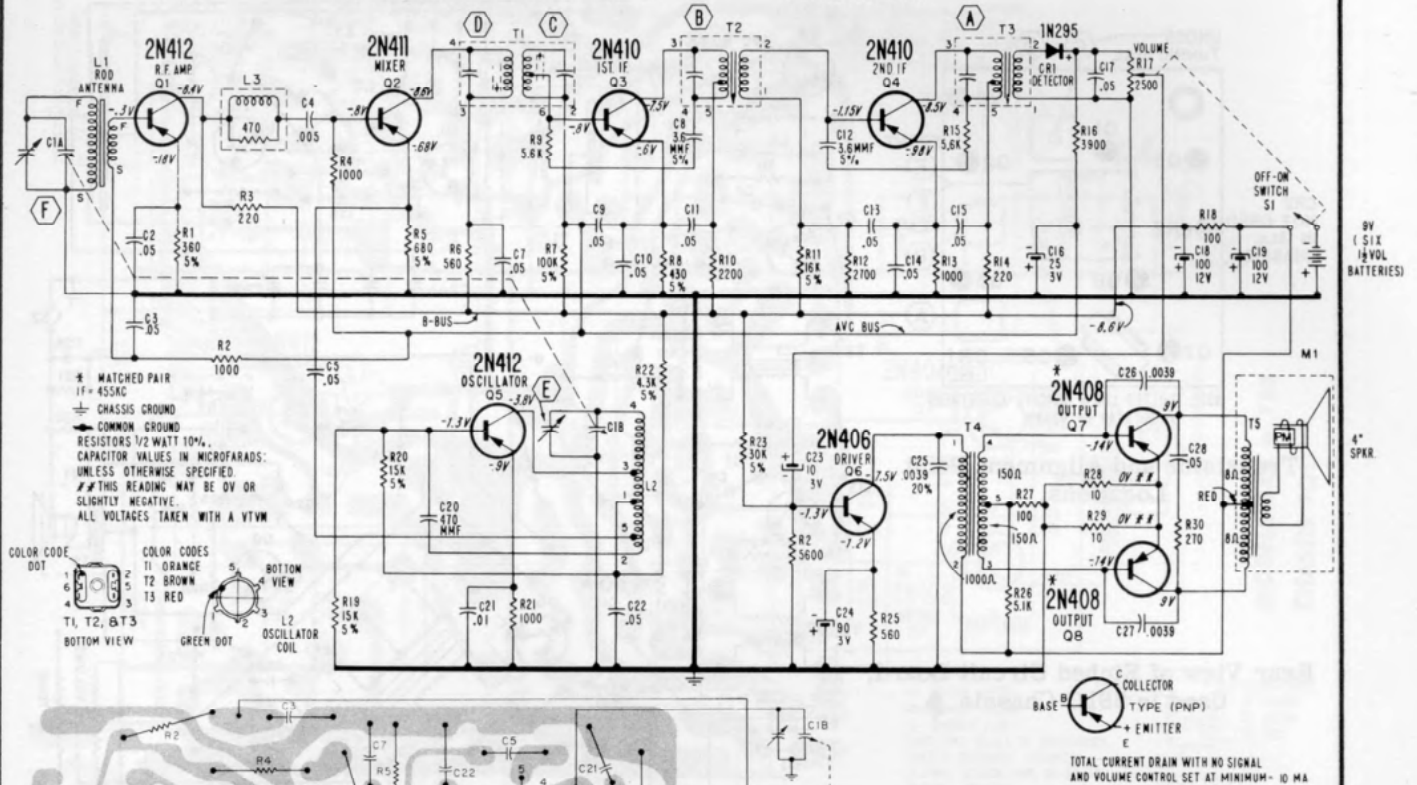


Admiral

MODELS 751 • 757

CHASSIS 8V1



View of Etched Wiring Board. Gray area represents etched wiring, black symbols and lines represent components on opposite side.

REMOVING CHASSIS FROM CABINET

1. Remove the two knobs plus the two chassis mounting screws at the bottom of the cabinet, if used.
2. Unsnap back cover and remove battery case.
3. Remove the two nuts at the right corners of the chassis.

4. Keeping one hand on front escutcheon, slide chassis to right to remove from cabinet.

NOTE: The left side of the chassis (from rear) is held only by two flanges on the escutcheon and the escutcheon, in some sets, is held only by the chassis under the flanges.

VOLTAGE DATA

- Voltages shown measured with no signal, using fresh batteries.
- Volume control at minimum; dial set at low frequency end.
- All readings made with VTVM between transistor terminals and B plus (ground).

