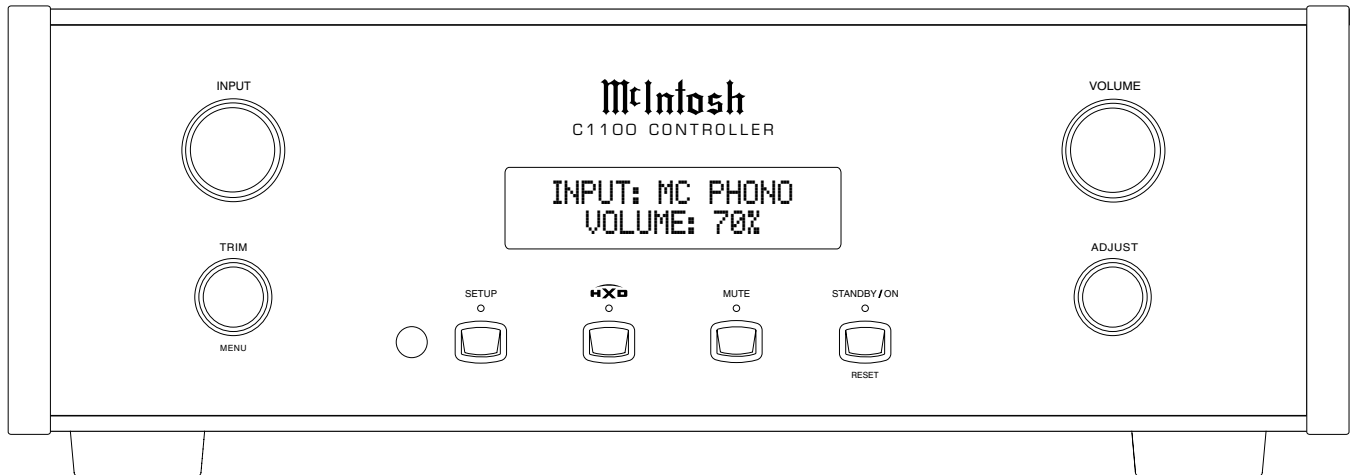




C1100

CONTROLLER

SERIAL NO. AEE1001 And Above



CONTENTS

Performance Specifications.....	2	Control Data Schematic and PCB	11 - 16
Notes.....	2	Power Supply Schematic and PCB	17 - 20
Rear Panel	3	Display/Pushbutton Schematic and PCB	21 - 26
Section Location.....	5 - 6	Parts List	29 - 33
Block Diagram	7 - 8	Repacking Instruction	35
Interconnection Diagram.....	9 - 10		

SERVICE MANUAL

PERFORMANCE SPECIFICATIONS

Frequency Response

+0, -0.5dB from 20Hz to 20,000Hz
+0, -3dB from 10Hz to 100,000Hz

Total Harmonic Distortion

0.005% maximum from 20Hz to 20,000Hz
(High Level Inputs)
0.05% maximum from 20Hz to 20,000Hz
(Phono Inputs)

Rated Output

5V Balanced, 2.5V Unbalanced (Main Outputs)

Maximum Voltage Output

20V RMS Balanced, 10V RMS Unbalanced

Sensitivity (for rated output)

High Level, 450mV Unbalanced, 900mV Balanced
Phono MM, 4.5mV
Phono MC, 0.45mV

Signal To Noise Ratio (A-Weighted)

High Level - 107dB (Below rated output)
MM Phono - 77dB (Below 5mV input)
MC Phono - 79dB (Below 0.5mV input)

Input Impedance

High Level - 44K ohms Balanced
22K ohms Unbalanced
Phono MC - 25, 50, 100, 200, 400 or 1,000 ohms;
220pF
Phono MM - 50 to 800pF, in 50pF steps;
47K ohms

Maximum Input Signal

High Level, 20V Balanced, 10V Unbalanced
Phono MC, 10mV
Phono MM, 100mV

Voltage Gain

High Level to Main, Output 1 and 2: 15dB
High Level to Rec/Fixed Output: 0dB
Phono MC to Rec/Fixed Output: 60dB
Phono MM to Rec/Fixed Output: 40dB

Output Impedance

200 ohms Balanced
100 ohms Unbalanced

Headphone Load Impedance (Selectable)

16 - 40 ohms, 40 - 150 ohms, 150 - 600 ohms

Headphone Voltage Gain (From Main Output)

16 - 40 ohms, 0dB
40 - 150 ohms, 6dB
150 - 600 ohms, 12dB

Headphone Output

150mW minimum from 16 ohms to 600 ohms load

Power Control and Trigger Output

12VDC, 25mA

Tube Complement

12 Tubes, Six - 12AX7A and Six - 12AT7
High level - one 12AX7A and two 12AT7 (per channel
viewed from Front Panel Window)
Phono MC - one 12AX7A and one-half 12AT7
(per channel viewed from the Top
Cover Window)
Phono MM - one 12AX7A and one-half 12AT7
(per channel viewed from the Top
Cover Window)

Power Requirements

Field AC Voltage conversion of the C1100 is not possible. The C1100 is factory configured for one of the following AC Voltages:
100 Volts, 50/60Hz at 75 watts
110 Volts, 50/60Hz at 75 watts
120 Volts, 50/60Hz at 75 watts
220 Volts, 50/60Hz at 75 watts
230 Volts, 50/60Hz at 75 watts
240 Volts, 50/60Hz at 75 watts
Standby Power, less than 0.5 watts
Note: Refer to the rear panel of the C1100C Controller for the correct voltage.

Overall Dimensions

Width is 17-1/2 inches (44.45cm)
Height is 6 inches (15.2cm) including feet
Depth is 19 inches (48.3cm) including the Front Panel, Knobs and Cables


Weight

C1100C Controller - 27 pounds (12.3 kg) net,
42 pounds (19.5 kg) in shipping
carton
C1100T Preamplifier - 25 pounds (11.3 kg) net,
39 pounds (17.7 kg) in shipping
carton

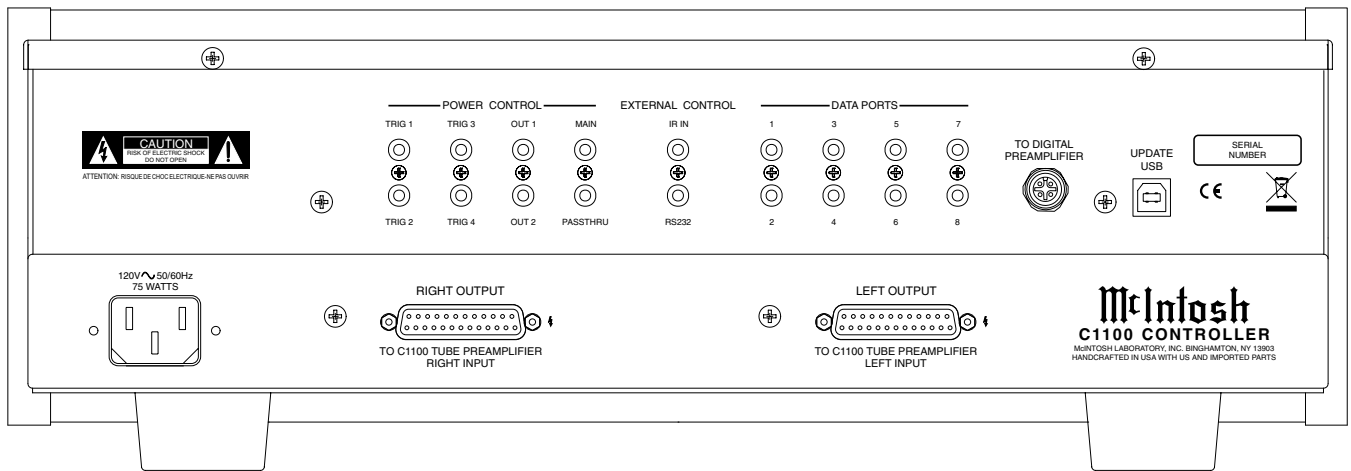
Shipping Carton Dimensions

Width is 27 inches (68.6cm)
Height is 12 inches (30.5cm)
Depth is 25 inches (63.5cm)

NOTES

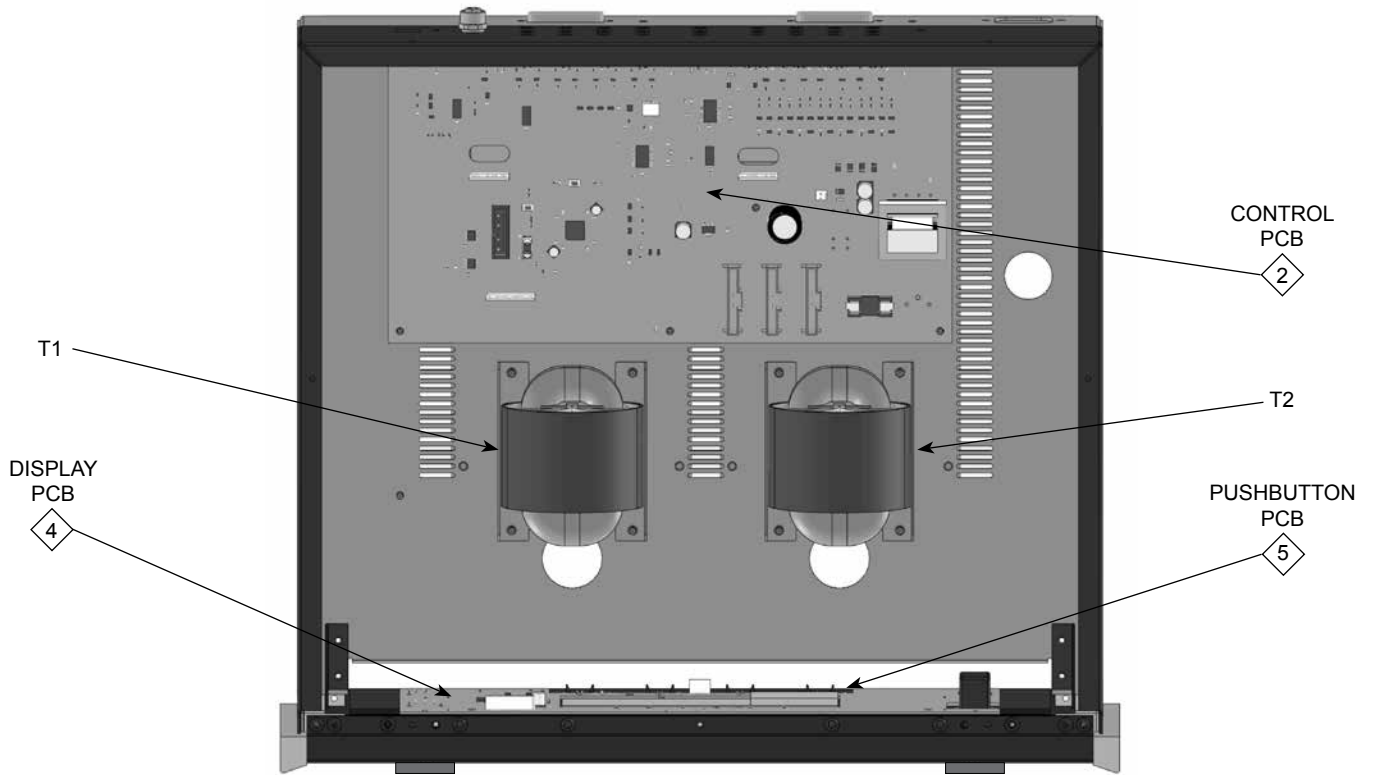
1. Unless otherwise noted, all voltages indicated on the schematics are measured under the following conditions:
 - a. AC input at rated voltage marked on rear panel.
 - b. All voltages are +/-10% with respect to ground. A high impedance (10 megaohm) voltmeter must be used.
2. Unless otherwise specified:
 - a. Resistor values are in ohms.
 - b. Capacitor values are microfarads (uF).
 - c. Inductor values are in microhenries (uH)
3. On PC board drawings, Square pad indicates:
 - a. Polarized Capacitors - Positive
 - b. Diodes - Cathode
 - c. Others - Pin 1
4. **WARNING**
Parts marked with the symbol  have critical characteristics. Use only replacement parts recommended by the manufacturer.
5. Use McIntosh Remote Control Model HR085.

REAR PANEL

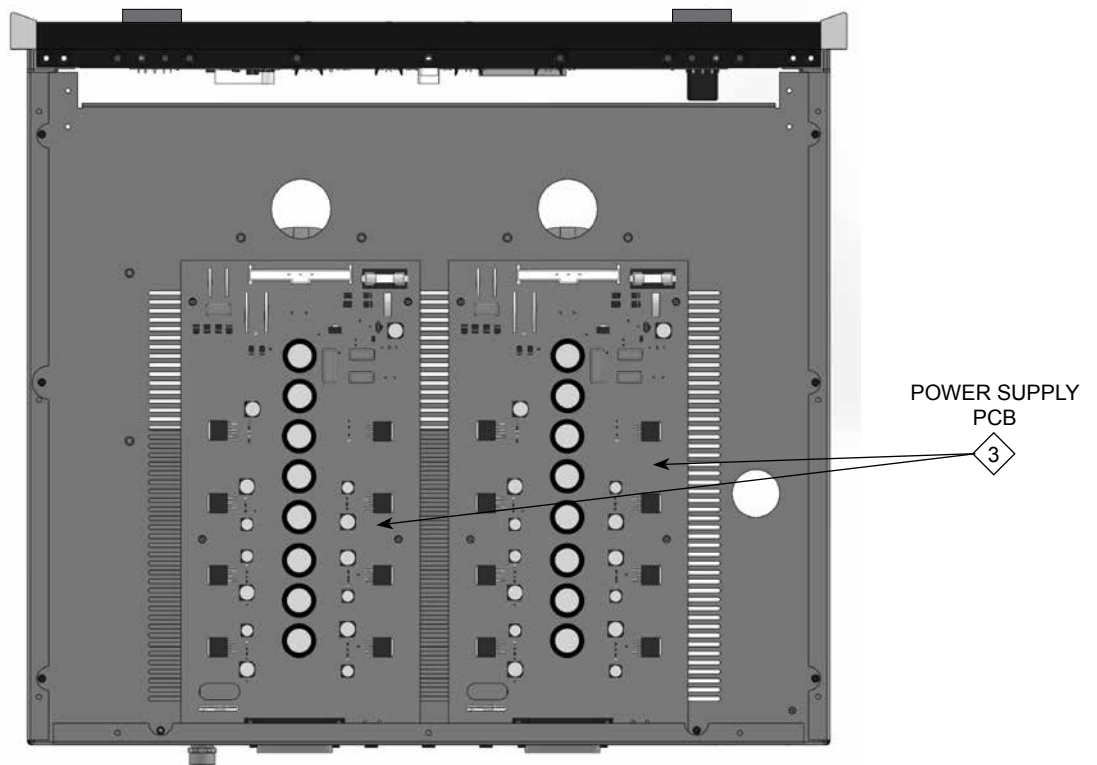


SECTION LOCATIONS

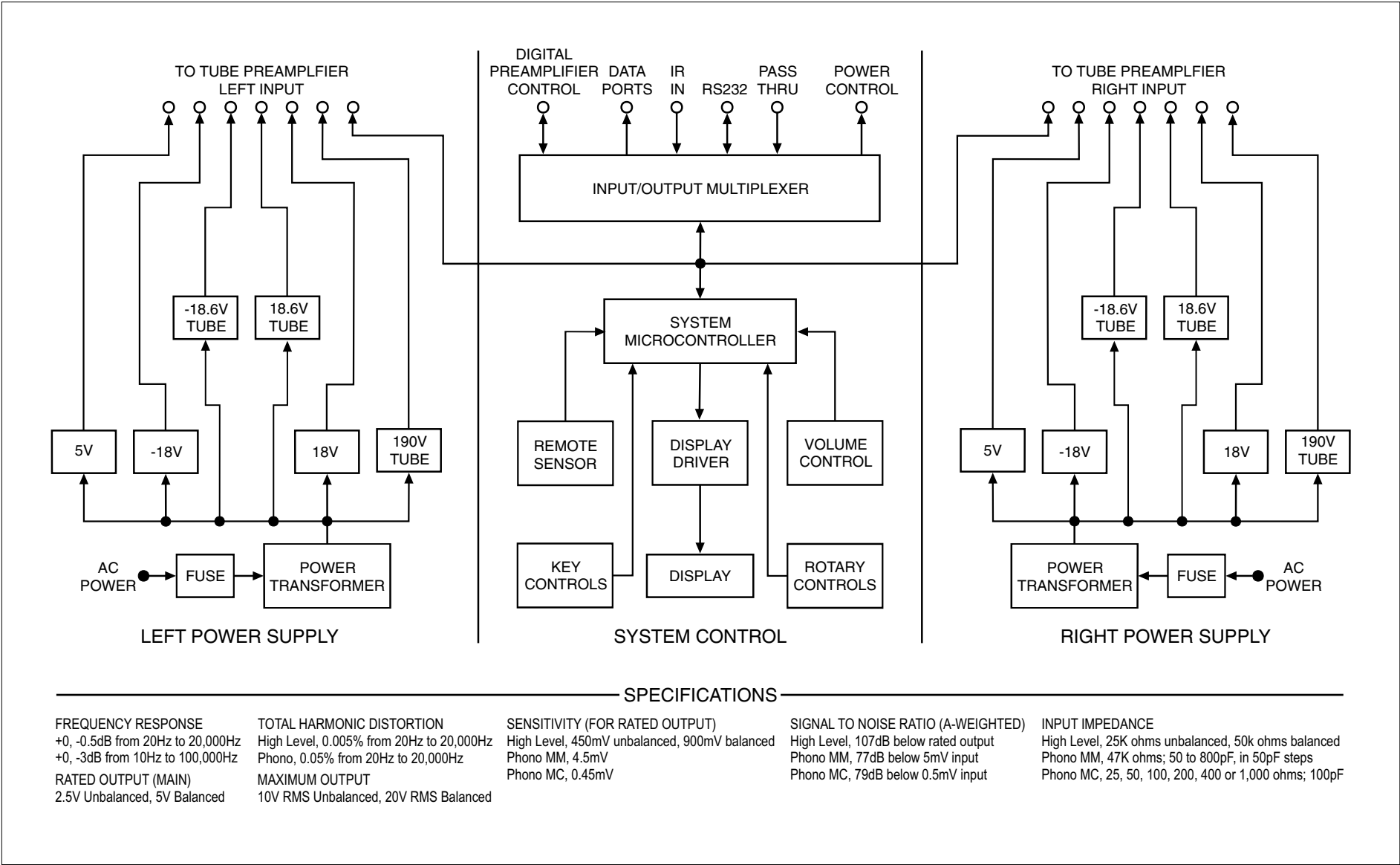
Top View



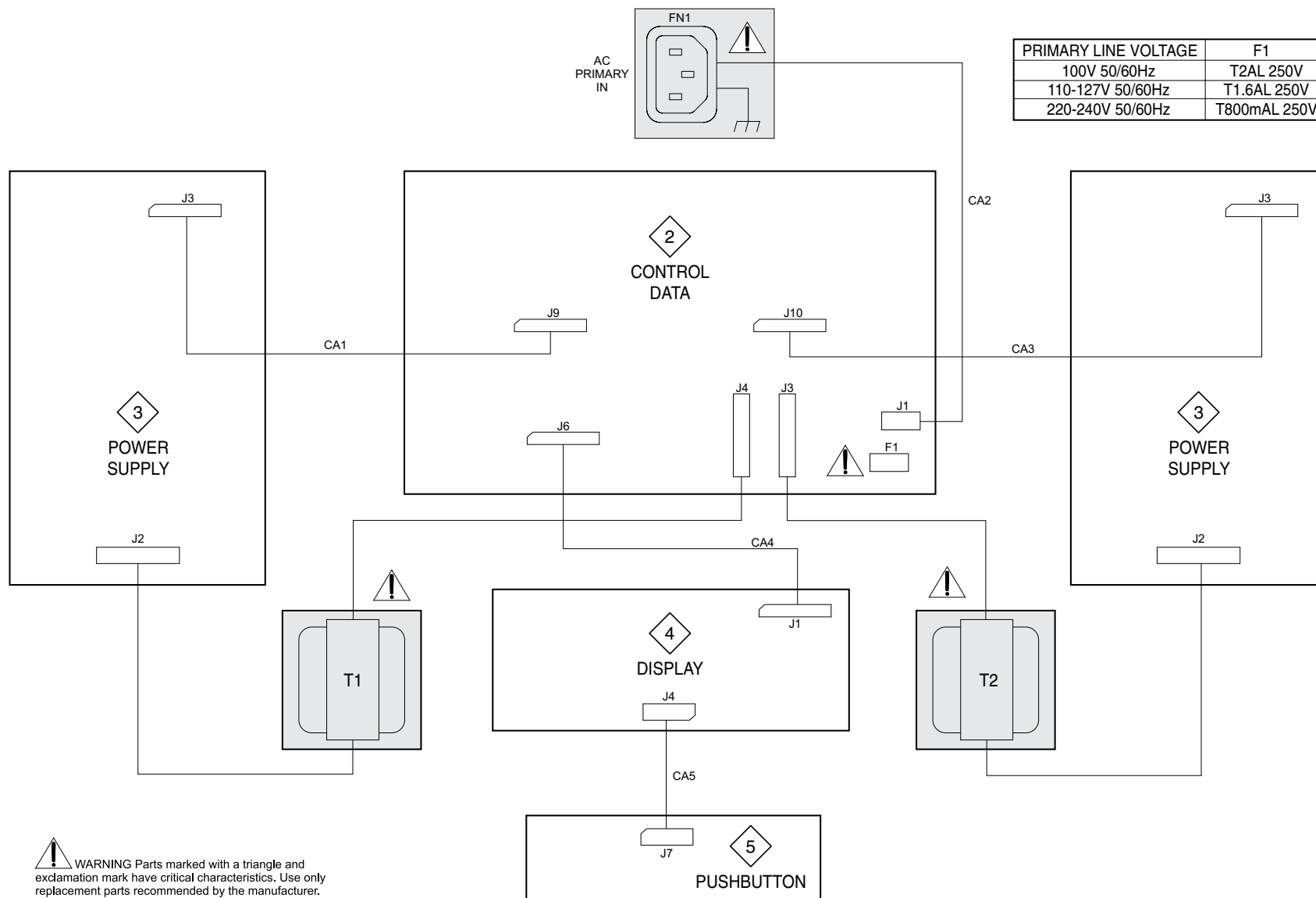
Bottom View



BLOCK DIAGRAM

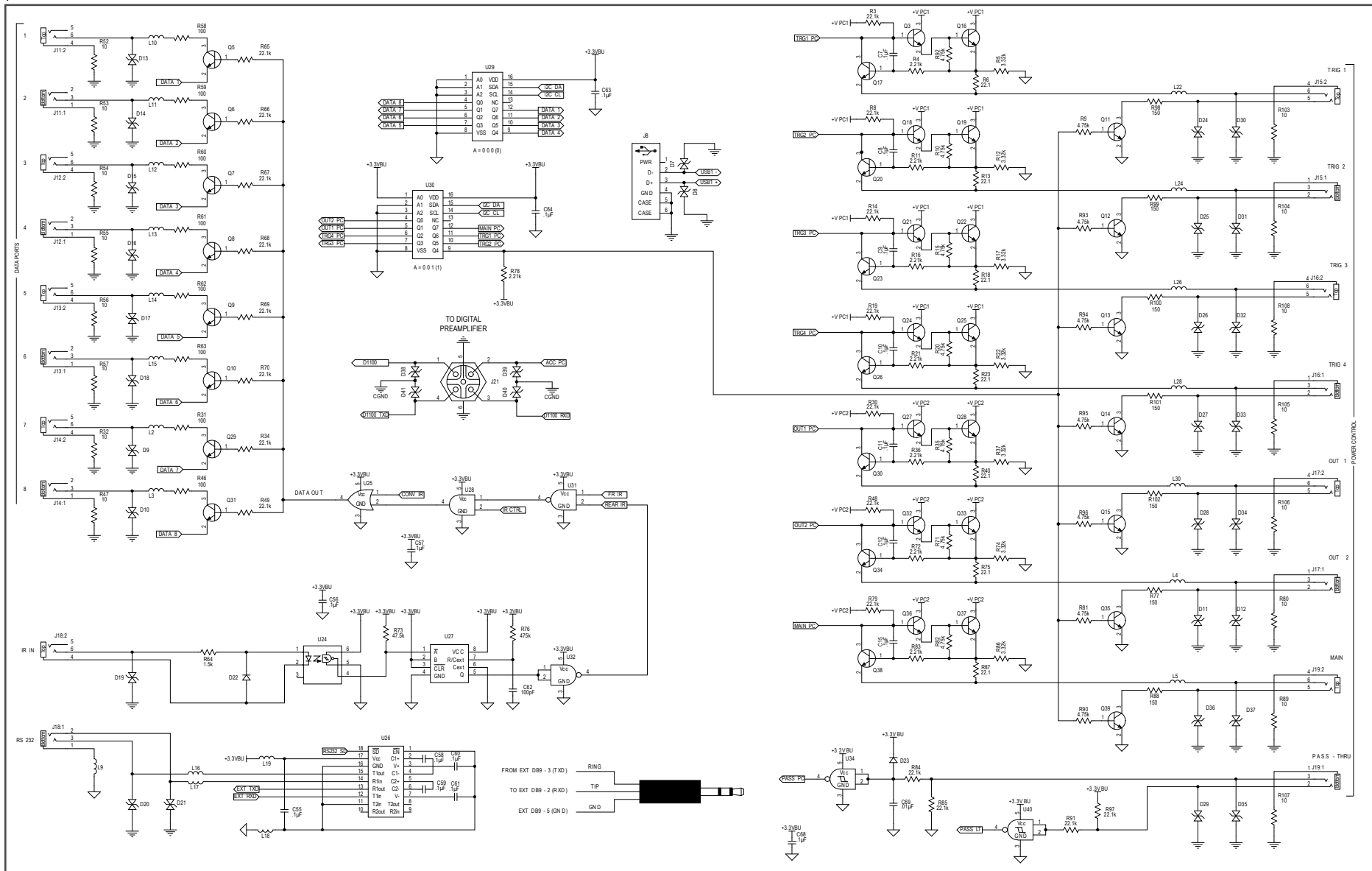


1 INTERCONNECT

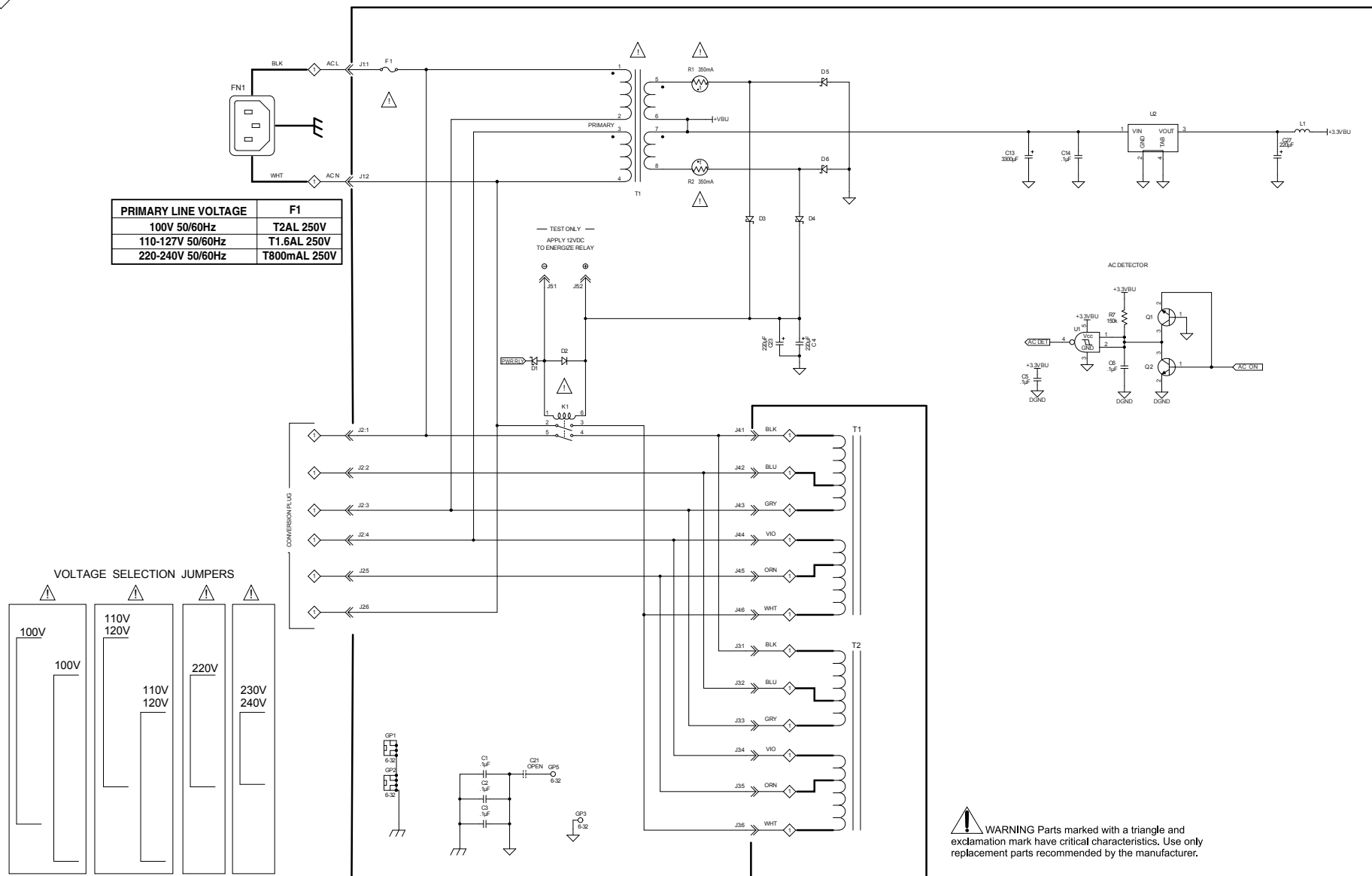


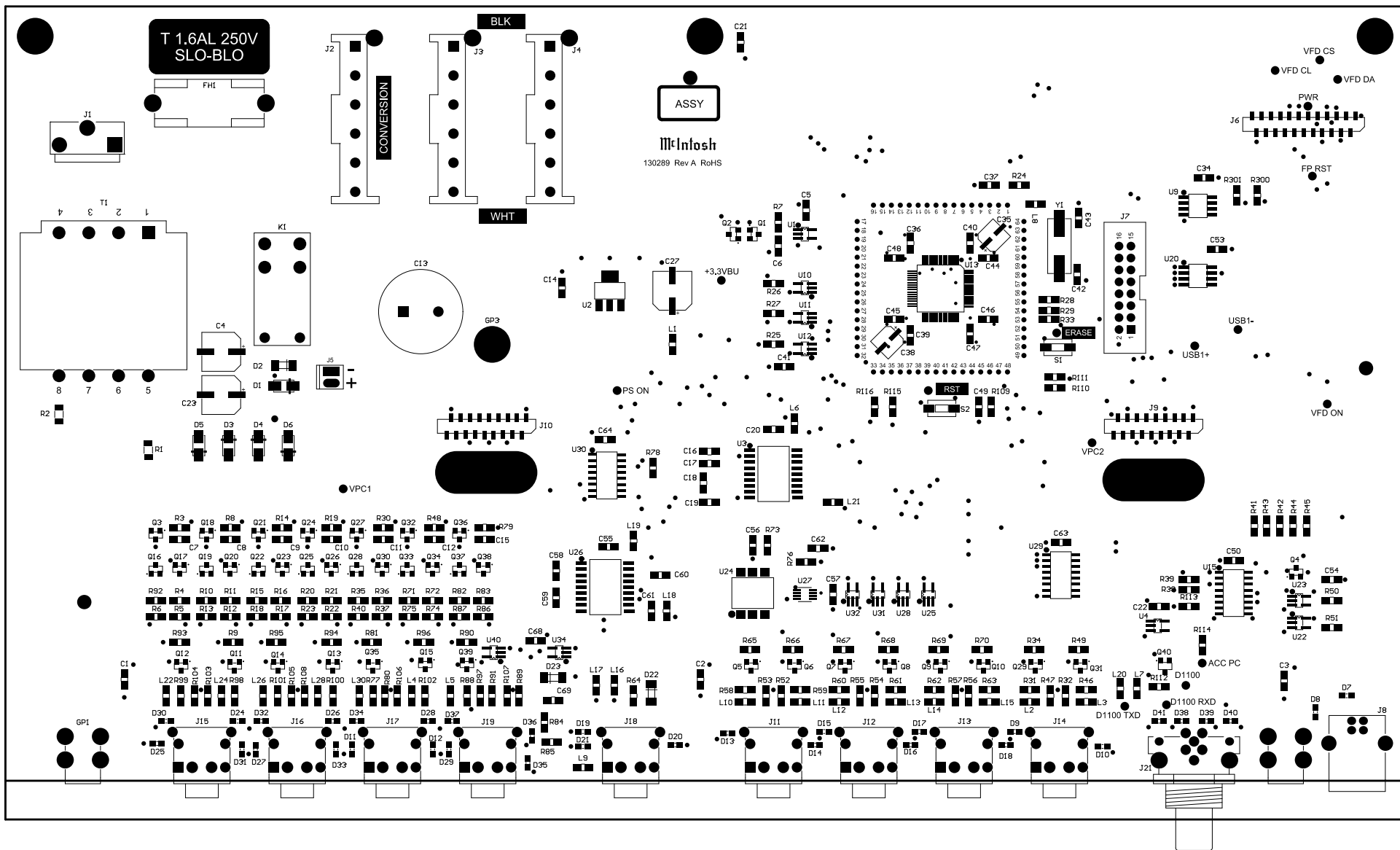


2 CONTROL DATA 751784 SCH 2 of 3

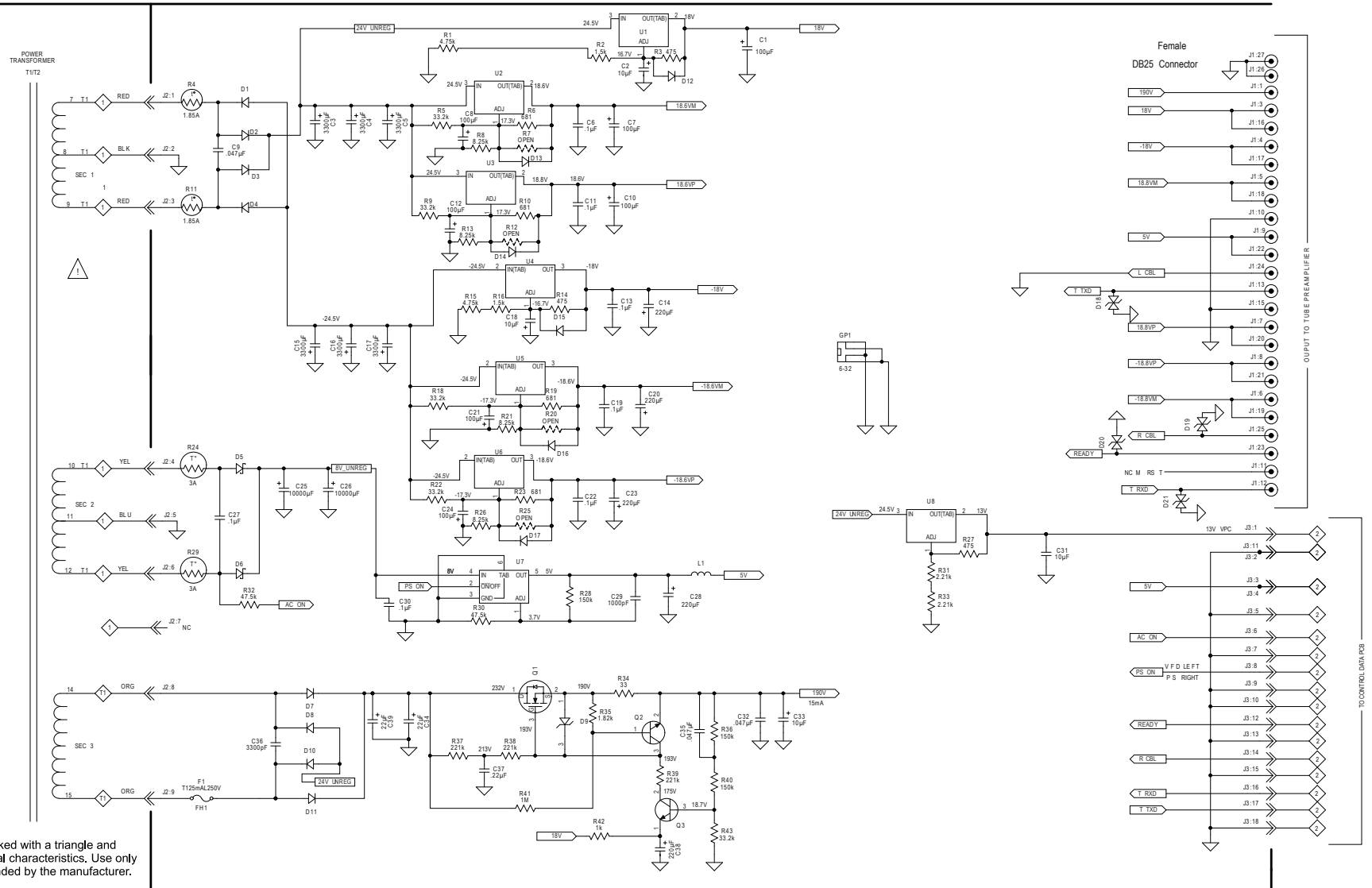


2 CONTROL DATA 751784 SCH 3 of 3

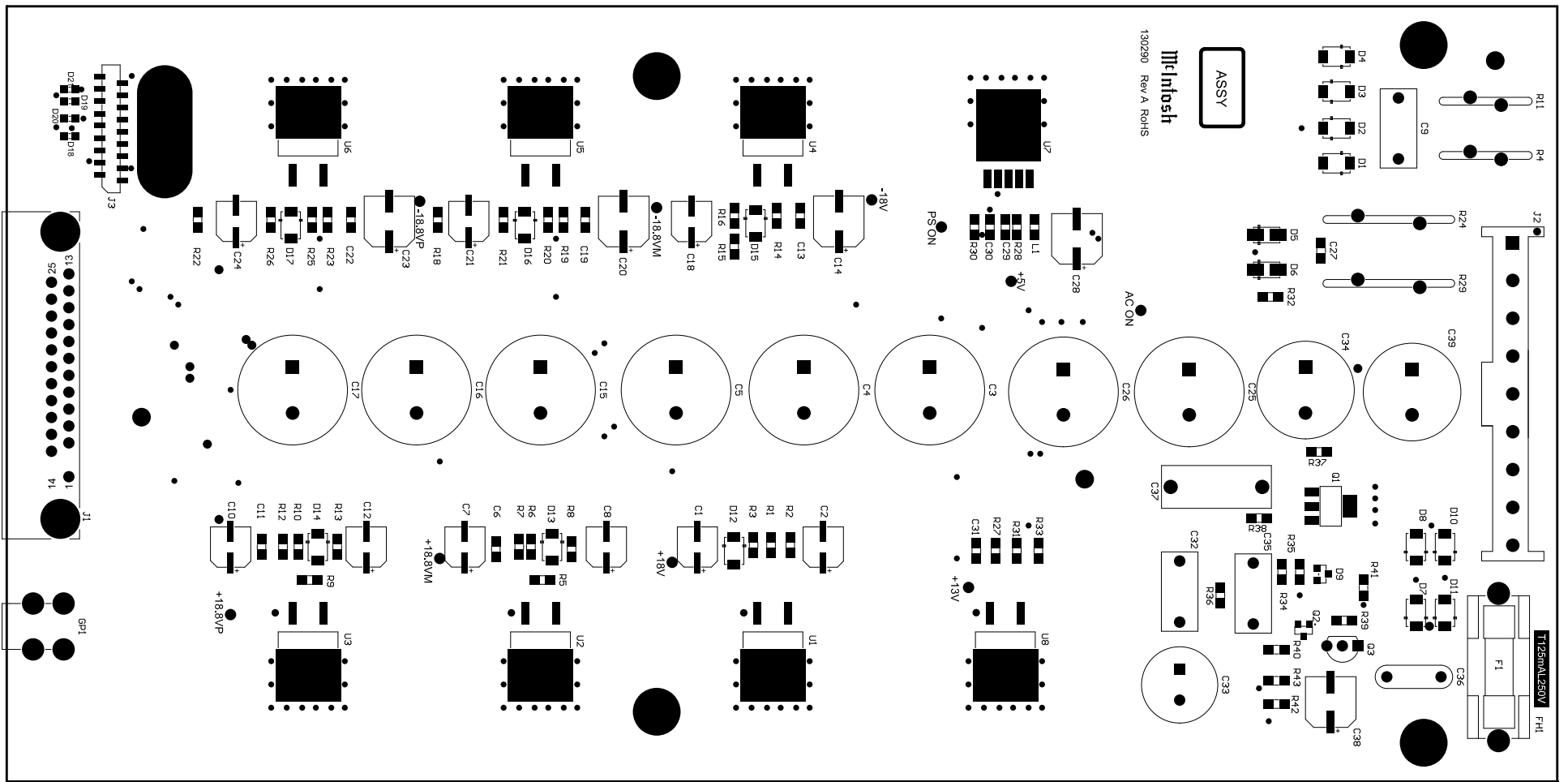




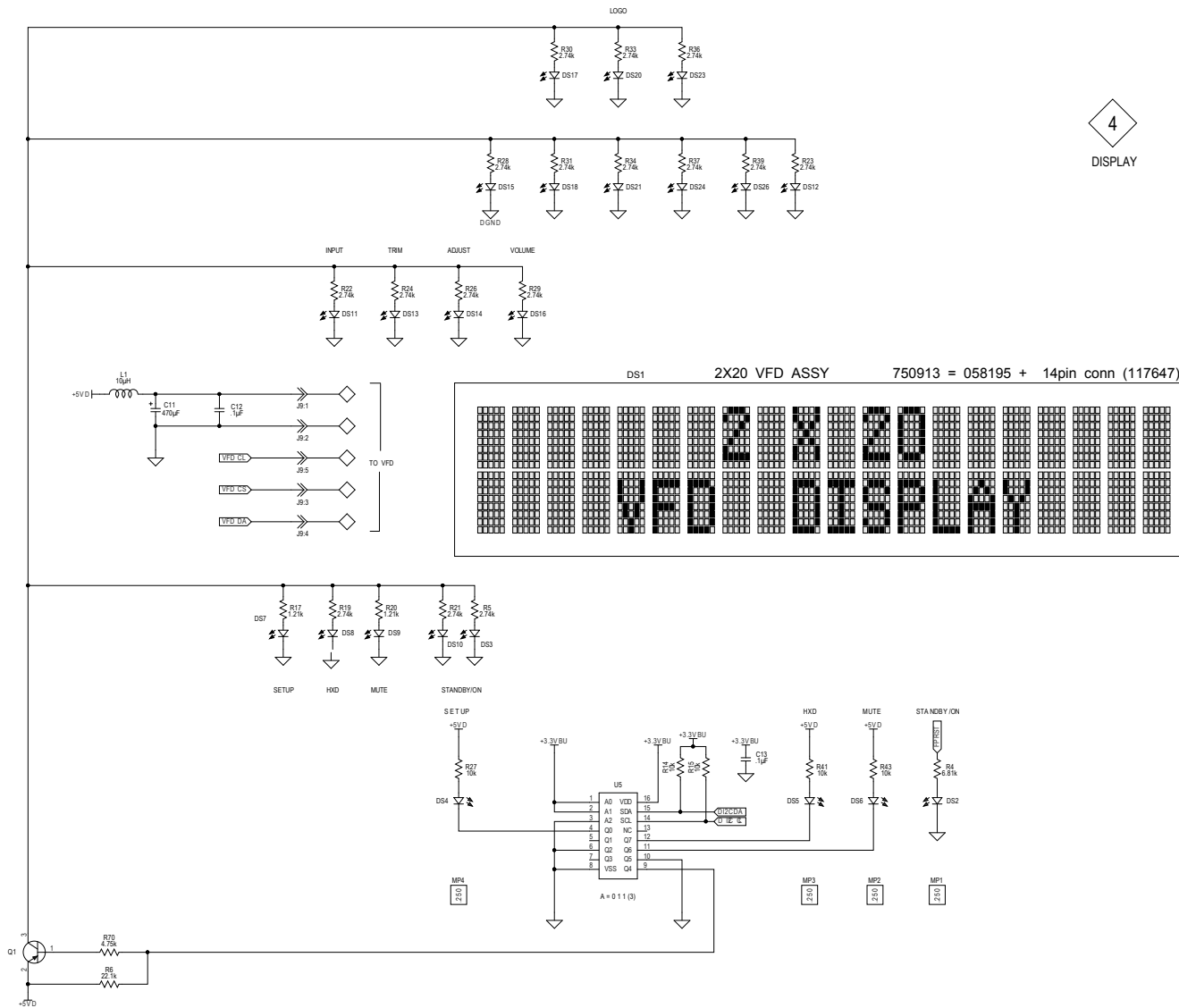
POWER SUPPLY 751785 SCH



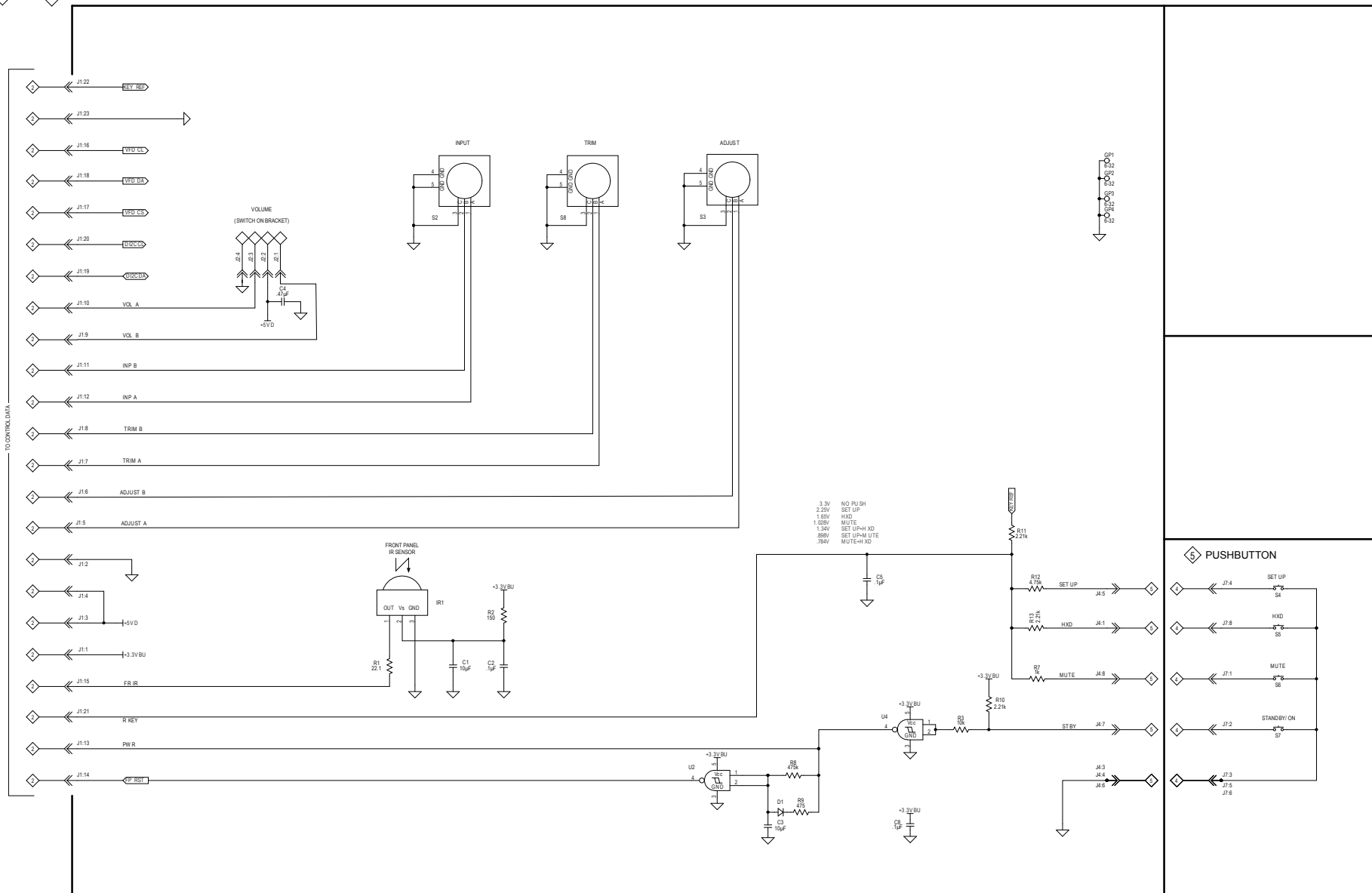
3 POWER SUPPLY 751785 PCB



4 5 DISPLAY/PUSHBUTTON 751786 SCH 1 of 2

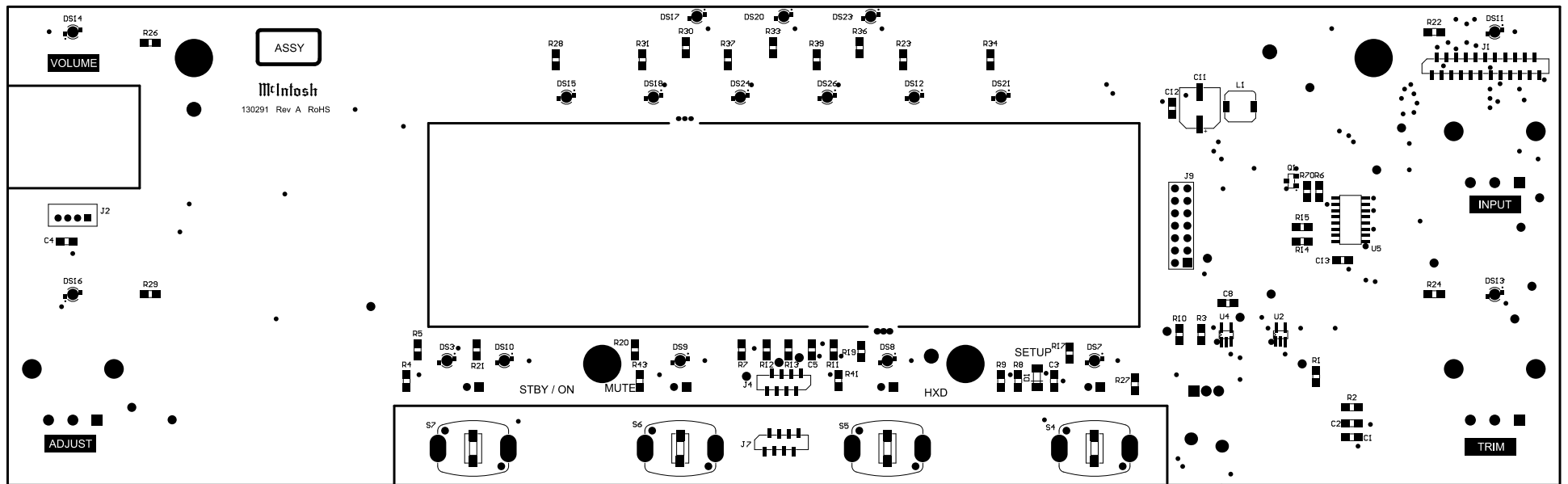


4 5 **DISPLAY/PUSHBUTTON** 751786 SCH 2 of 2



C1100

4 5 *DISPLAY/PUSHBUTTON 751786 PCB*



PARTS LIST

① INTERCONNECT

Ref. No.	Description	Part No.
CA1	CABLE FFC 18 CONDUCTOR 160MM	171549
CA2	CABLE ASSY POWER SW/BACKUP PS	171060
CA3	CABLE FFC 18 CONDUCTOR 160MM	171549
CA4	CABLE FLAT FLEXIBLE 23COND 250	171552
CA5	CABLE FLAT FLEX 8 PIN 1MM	173026
FN1	AC RECEPTACLE W/LINE FILTER 3A	118033
T1	CONTACT MCINTOSH SERVICE DEPARTMENT	
T2	CONTACT MCINTOSH SERVICE DEPARTMENT	

② CONTROL DATA PCB 751784

C1	CAP MONO .1uF 50V ±20% X7R SMD	061365
C2	CAP MONO .1uF 50V ±20% X7R SMD	061365
C3	CAP MONO .1uF 50V ±20% X7R SMD	061365
C4	CAP ELECT 220UF 25V SMD	066606
C5	CAP MONO .1uF 50V ±20% X7R SMD	061365
C6	CAP MONO .1uF 50V ±20% X7R SMD	061365
C7	CAP MONO .1uF 50V ±20% X7R SMD	061365
C8	CAP MONO .1uF 50V ±20% X7R SMD	061365
C9	CAP MONO .1uF 50V ±20% X7R SMD	061365
C10	CAP MONO .1uF 50V ±20% X7R SMD	061365
C11	CAP MONO .1uF 50V ±20% X7R SMD	061365
C12	CAP MONO .1uF 50V ±20% X7R SMD	061365
C13	CAP ELECT 3300UF 35V	066509
C14	CAP MONO .1uF 50V ±20% X7R SMD	061365
C15	CAP MONO .1uF 50V ±20% X7R SMD	061365
C16	CAP MONO .1uF 50V ±20% X7R SMD	061365
C17	CAP MONO .1uF 50V ±20% X7R SMD	061365
C18	CAP MONO .1uF 50V ±20% X7R SMD	061365
C19	CAP MONO .1uF 50V ±20% X7R SMD	061365
C20	CAP MONO .1uF 50V ±20% X7R SMD	061365
C22	CAP MONO .1uF 50V ±20% X7R SMD	061365
C23	CAP ELECT 220UF 25V SMD	066606
C27	CAP ELECT 220UF 25V SMD	066606
C34	CAP MONO .1uF 50V ±20% X7R SMD	061365
C35	CAP ELECT 4.7UF 50V SMD	066601
C36	CAP MONO .1uF 50V ±20% X7R SMD	061365
C37	CAP MONO .1uF 50V ±20% X7R SMD	061365
C38	CAP ELECT 4.7UF 50V SMD	066601
C39	CAP MONO .1uF 50V ±20% X7R SMD	061365
C40	CAP MONO .1uF 50V ±20% X7R SMD	061365
C41	CAP MONO .1uF 50V ±20% X7R SMD	061365
C42	CAP MNO 12pF 50V 5% NPOSMD0805	061364
C43	CAP MNO 12pF 50V 5% NPOSMD0805	061364
C44	CAP MONO .1uF 50V ±20% X7R SMD	061365
C45	CAP MONO .1uF 50V ±20% X7R SMD	061365
C46	CAP MONO .1uF 50V ±20% X7R SMD	061365
C47	CAP MONO .1uF 50V ±20% X7R SMD	061365
C48	CAP MONO .1uF 50V ±20% X7R SMD	061365
C49	CAP MONO .1uF 50V ±20% X7R SMD	061365
C50	CAP MONO .1uF 50V ±20% X7R SMD	061365
C53	CAP MONO .1uF 50V ±20% X7R SMD	061365
C54	CAP MONO .1uF 50V ±20% X7R SMD	061365
C55	CAP MONO .1uF 50V ±20% X7R SMD	061365
C56	CAP MONO .1uF 50V ±20% X7R SMD	061365
C57	CAP MONO .1uF 50V ±20% X7R SMD	061365
C58	CAP MONO .1uF 50V ±20% X7R SMD	061365
C59	CAP MONO .1uF 50V ±20% X7R SMD	061365

Ref. No.	Description	Part No.
C60	CAP MONO .1uF 50V ±20% X7R SMD	061365
C61	CAP MONO .1uF 50V ±20% X7R SMD	061365
C62	CAP 100pF 200V 5% SMD0805	061390
C63	CAP MONO .1uF 50V ±20% X7R SMD	061365
C64	CAP MONO .1uF 50V ±20% X7R SMD	061365
C68	CAP MONO .1uF 50V ±20% X7R SMD	061365
C69	CAP .01uF 50V 20% X7R SMD0805	061372
D1	DIODE SCHOTTKY 40V 2A SMD	070210
D2	DIODE SMALL SIGNAL 4148 SMD	070199
D3	DIODE SCHOTTKY 40V 2A SMD	070210
D4	DIODE SCHOTTKY 40V 2A SMD	070210
D5	DIODE SCHOTTKY 40V 2A SMD	070210
D6	DIODE SCHOTTKY 40V 2A SMD	070210
D7	DIODE ESD SUPPRESSOR SMD	070198
D8	DIODE ESD SUPPRESSOR SMD	070198
D9	DIODE ESD SUPPRESSOR SMD	070198
D10	DIODE ESD SUPPRESSOR SMD	070198
D11	DIODE ESD SUPPRESSOR SMD	070198
D12	DIODE ESD SUPPRESSOR SMD	070198
D13	DIODE ESD SUPPRESSOR SMD	070198
D14	DIODE ESD SUPPRESSOR SMD	070198
D15	DIODE ESD SUPPRESSOR SMD	070198
D16	DIODE ESD SUPPRESSOR SMD	070198
D17	DIODE ESD SUPPRESSOR SMD	070198
D18	DIODE ESD SUPPRESSOR SMD	070198
D19	DIODE ESD SUPPRESSOR SMD	070198
D20	DIODE ESD SUPPRESSOR SMD	070198
D21	DIODE ESD SUPPRESSOR SMD	070198
D22	DIODE SMALL SIGNAL 4148 SMD	070199
D23	DIODE SMALL SIGNAL 4148 SMD	070199
D24	DIODE ESD SUPPRESSOR SMD	070198
D25	DIODE ESD SUPPRESSOR SMD	070198
D26	DIODE ESD SUPPRESSOR SMD	070198
D27	DIODE ESD SUPPRESSOR SMD	070198
D28	DIODE ESD SUPPRESSOR SMD	070198
D29	DIODE ESD SUPPRESSOR SMD	070198
D30	DIODE ESD SUPPRESSOR SMD	070198
D31	DIODE ESD SUPPRESSOR SMD	070198
D32	DIODE ESD SUPPRESSOR SMD	070198
D33	DIODE ESD SUPPRESSOR SMD	070198
D34	DIODE ESD SUPPRESSOR SMD	070198
D35	DIODE ESD SUPPRESSOR SMD	070198
D36	DIODE ESD SUPPRESSOR SMD	070198
D37	DIODE ESD SUPPRESSOR SMD	070198
D38	DIODE ESD SUPPRESSOR SMD	070198
D39	DIODE ESD SUPPRESSOR SMD	070198
D40	DIODE ESD SUPPRESSOR SMD	070198
D41	DIODE ESD SUPPRESSOR SMD	070198
F1	HOLDER FUSE 5X20MM PCB MOUNT	178159
GP1	TERMINAL PC MOUNT 6-32	117975
GP2	TERMINAL PC MOUNT 6-32	117975
J1	CONNECTOR 2PIN HEADER 11.88MM	118026
J2	CONN PCB MOUNT POWER RED	117719
J3	CONN PCB MOUNT POWER RED	117719
J4	CONN PCB MOUNT POWER RED	117719
J5	CONN 2 PIN MALE	117213
J6	CONN 23 PIN FFC SMD	118004
J7	CONN SHROUDED HEADER 2 X 8	117977

PARTS LIST (Cont'd.)

② CONTROL DATA PCB 751784 (Cont'd.)

Ref. No.	Description	Part No.	Ref. No.	Description	Part No.
J8	CONN USB JACK TYPE B RA	117905	Q19	TRANSISTOR NPN A05 SMD	132333
J9	CONN 18 PIN FFC SMD	118003	Q20	TRANSISTOR NPN A05 SMD	132333
J10	CONN 18 PIN FFC SMD	118003	Q21	TRANSISTOR NPN A05 SMD	132333
J11	JACK HEADPHONE DUAL BLACK 1/8"	117825	Q22	TRANSISTOR NPN A05 SMD	132333
J12	JACK HEADPHONE DUAL BLACK 1/8"	117825	Q23	TRANSISTOR NPN A05 SMD	132333
J13	JACK HEADPHONE DUAL BLACK 1/8"	117825	Q24	TRANSISTOR NPN A05 SMD	132333
J14	JACK HEADPHONE DUAL BLACK 1/8"	117825	Q25	TRANSISTOR NPN A05 SMD	132333
J15	JACK HEADPHONE DUAL BLACK 1/8"	117825	Q26	TRANSISTOR NPN A05 SMD	132333
J16	JACK HEADPHONE DUAL BLACK 1/8"	117825	Q27	TRANSISTOR NPN A05 SMD	132333
J17	JACK HEADPHONE DUAL BLACK 1/8"	117825	Q28	TRANSISTOR NPN A05 SMD	132333
J18	JACK HEADPHONE DUAL BLACK 1/8"	117825	Q29	TRANSISTOR NPN A05 SMD	132333
J19	JACK HEADPHONE DUAL BLACK 1/8"	117825	Q30	TRANSISTOR NPN A05 SMD	132333
J21	CONN 5 PIN M12 PCB FEMALE	118121	Q31	TRANSISTOR NPN A05 SMD	132333
K1	RELAY 12VDC 5A 250VAC TV-4	087077	Q32	TRANSISTOR NPN A05 SMD	132333
L1	FERRITE 60 OHM 5 AMP SMD	076025	Q33	TRANSISTOR NPN A05 SMD	132333
L2	FERRITE 600 OHM 1 AMP SMD	076026	Q34	TRANSISTOR NPN A05 SMD	132333
L3	FERRITE 600 OHM 1 AMP SMD	076026	Q35	TRANSISTOR NPN A05 SMD	132333
L4	FERRITE 600 OHM 1 AMP SMD	076026	Q36	TRANSISTOR NPN A05 SMD	132333
L5	FERRITE 600 OHM 1 AMP SMD	076026	Q37	TRANSISTOR NPN A05 SMD	132333
L6	FERRITE 600 OHM 1 AMP SMD	076026	Q38	TRANSISTOR NPN A05 SMD	132333
L7	FERRITE 600 OHM 1 AMP SMD	076026	Q39	TRANSISTOR NPN A05 SMD	132333
L8	FERRITE 600 OHM 1 AMP SMD	076026	Q40	TRANSISTOR PNP W/R1R2 10K/10K SMD	132348
L9	FERRITE 600 OHM 1 AMP SMD	076026	R1	FUSE 0.35A 16V RESET 1206 SMD	145054
L10	FERRITE 600 OHM 1 AMP SMD	076026	R2	FUSE 0.35A 16V RESET 1206 SMD	145054
L11	FERRITE 600 OHM 1 AMP SMD	076026	R3	RES SMD0805 22.1K 1/8W 1%	145012
L12	FERRITE 600 OHM 1 AMP SMD	076026	R4	RES SMD0805 2.21K 1/8W 1%	145024
L13	FERRITE 600 OHM 1 AMP SMD	076026	R5	RES SMD0805 3.32K 1/8W 1%	145026
L14	FERRITE 600 OHM 1 AMP SMD	076026	R6	RES SMD0805 22.1 1/8W 1%	145003
L15	FERRITE 600 OHM 1 AMP SMD	076026	R7	RES SMD0805 150K 1/8W 1%	145037
L16	FERRITE 600 OHM 1 AMP SMD	076026	R8	RES SMD0805 22.1K 1/8W 1%	145012
L17	FERRITE 600 OHM 1 AMP SMD	076026	R9	RES SMD0805 4.75K 1/8W 1%	145008
L18	FERRITE 600 OHM 1 AMP SMD	076026	R10	RES SMD0805 4.75K 1/8W 1%	145008
L19	FERRITE 600 OHM 1 AMP SMD	076026	R11	RES SMD0805 2.21K 1/8W 1%	145024
L20	FERRITE 600 OHM 1 AMP SMD	076026	R12	RES SMD0805 3.32K 1/8W 1%	145026
L21	FERRITE 600 OHM 1 AMP SMD	076026	R13	RES SMD0805 22.1 1/8W 1%	145003
L22	FERRITE 600 OHM 1 AMP SMD	076026	R14	RES SMD0805 22.1K 1/8W 1%	145012
L24	FERRITE 600 OHM 1 AMP SMD	076026	R15	RES SMD0805 4.75K 1/8W 1%	145008
L26	FERRITE 600 OHM 1 AMP SMD	076026	R16	RES SMD0805 2.21K 1/8W 1%	145024
L28	FERRITE 600 OHM 1 AMP SMD	076026	R17	RES SMD0805 3.32K 1/8W 1%	145026
L30	FERRITE 600 OHM 1 AMP SMD	076026	R18	RES SMD0805 22.1 1/8W 1%	145003
PCB1	PC BD CONTROL DATA	130289	R19	RES SMD0805 22.1K 1/8W 1%	145012
Q1	TRANSISTOR NPN A05 SMD	132333	R20	RES SMD0805 4.75K 1/8W 1%	145008
Q2	TRANSISTOR NPN A05 SMD	132333	R21	RES SMD0805 2.21K 1/8W 1%	145024
Q3	TRANSISTOR NPN A05 SMD	132333	R22	RES SMD0805 3.32K 1/8W 1%	145026
Q4	TRANSISTOR NPN A05 SMD	132333	R23	RES SMD0805 22.1 1/8W 1%	145003
Q5	TRANSISTOR NPN A05 SMD	132333	R24	RES SMD0805 10 1/8W 1%	145017
Q6	TRANSISTOR NPN A05 SMD	132333	R25	RES SMD0805 22.1 1/8W 1%	145003
Q7	TRANSISTOR NPN A05 SMD	132333	R26	RES SMD0805 22.1 1/8W 1%	145003
Q8	TRANSISTOR NPN A05 SMD	132333	R27	RES SMD0805 22.1 1/8W 1%	145003
Q9	TRANSISTOR NPN A05 SMD	132333	R28	RES SMD0805 22.1 1/8W 1%	145003
Q10	TRANSISTOR NPN A05 SMD	132333	R29	RES SMD0805 22.1 1/8W 1%	145003
Q11	TRANSISTOR NPN A05 SMD	132333	R30	RES SMD0805 22.1K 1/8W 1%	145012
Q12	TRANSISTOR NPN A05 SMD	132333	R31	RES SMD0805 100 1/8W 1%	145005
Q13	TRANSISTOR NPN A05 SMD	132333	R32	RES SMD0805 10 1/8W 1%	145017
Q14	TRANSISTOR NPN A05 SMD	132333	R33	RES SMD0805 1K 1/8W 1%	145007
Q15	TRANSISTOR NPN A05 SMD	132333	R34	RES SMD0805 22.1K 1/8W 1%	145012
Q16	TRANSISTOR NPN A05 SMD	132333	R35	RES SMD0805 4.75K 1/8W 1%	145008
Q17	TRANSISTOR NPN A05 SMD	132333	R36	RES SMD0805 2.21K 1/8W 1%	145024
Q18	TRANSISTOR NPN A05 SMD	132333	R37	RES SMD0805 3.32K 1/8W 1%	145026

PARTS LIST (Cont'd.)

② CONTROL DATA PCB 751784 (Cont'd.)

Ref. No.	Description	Part No.	Ref. No.	Description	Part No.
R38	RES SMD0805 22.1 1/8W 1%	145003	R97	RES SMD0805 22.1K 1/8W 1%	145012
R39	RES SMD0805 22.1K 1/8W 1%	145012	R98	RES SMD0805 150 1/8W 1%	145019
R40	RES SMD0805 22.1 1/8W 1%	145003	R99	RES SMD0805 150 1/8W 1%	145019
R41	RES SMD0805 22.1K 1/8W 1%	145012	R100	RES SMD0805 150 1/8W 1%	145019
R42	RES SMD0805 22.1K 1/8W 1%	145012	R101	RES SMD0805 150 1/8W 1%	145019
R43	RES SMD0805 22.1K 1/8W 1%	145012	R102	RES SMD0805 150 1/8W 1%	145019
R44	RES SMD0805 22.1K 1/8W 1%	145012	R103	RES SMD0805 10 1/8W 1%	145017
R45	RES SMD0805 2.21K 1/8W 1%	145024	R104	RES SMD0805 10 1/8W 1%	145017
R46	RES SMD0805 100 1/8W 1%	145005	R105	RES SMD0805 10 1/8W 1%	145017
R47	RES SMD0805 10 1/8W 1%	145017	R106	RES SMD0805 10 1/8W 1%	145017
R48	RES SMD0805 22.1K 1/8W 1%	145012	R107	RES SMD0805 10 1/8W 1%	145017
R49	RES SMD0805 22.1K 1/8W 1%	145012	R108	RES SMD0805 10 1/8W 1%	145017
R50	RES SMD0805 22.1 1/8W 1%	145003	R109	RES SMD0805 1K 1/8W 1%	145007
R51	RES SMD0805 22.1 1/8W 1%	145003	R111	RES SMD0805 1K 1/8W 1%	145007
R52	RES SMD0805 10 1/8W 1%	145017	R112	RES SMD0805 100K 1/8W 1%	145014
R53	RES SMD0805 10 1/8W 1%	145017	R113	RES SMD0805 100K 1/8W 1%	145014
R54	RES SMD0805 10 1/8W 1%	145017	R114	RES SMD0805 475 1/8W 1%	145020
R55	RES SMD0805 10 1/8W 1%	145017	R115	RES SMD0805 10K 1/8W 1%	145010
R56	RES SMD0805 10 1/8W 1%	145017	R116	RES SMD0805 10K 1/8W 1%	145010
R57	RES SMD0805 10 1/8W 1%	145017	R300	RES SMD0805 10K 1/8W 1%	145010
R58	RES SMD0805 100 1/8W 1%	145005	R301	RES SMD0805 10K 1/8W 1%	145010
R59	RES SMD0805 100 1/8W 1%	145005	S1	SWITCH TACT 260GF 5MM SMD	150072
R60	RES SMD0805 100 1/8W 1%	145005	S2	SWITCH TACT 260GF 5MM SMD	150072
R61	RES SMD0805 100 1/8W 1%	145005	T1	TRANSFORMER BACKUP	159376
R62	RES SMD0805 100 1/8W 1%	145005	U1	IC SINGLE NAND SCHMITT SMD	133724
R63	RES SMD0805 100 1/8W 1%	145005	U2	IC REGULATOR 3.3V 500mA SMD	133736
R64	RES SMD0805 1.5K 1/8W 1%	145022	U3	IC DUAL RS232 3V W/SHUTDWN SMD	133707
R65	RES SMD0805 22.1K 1/8W 1%	145012	U4	IC SINGLE 2-INPUT AND GATE SMD	133552
R66	RES SMD0805 22.1K 1/8W 1%	145012	U9	IC I2C BUS REPEATER SMD	133769
R67	RES SMD0805 22.1K 1/8W 1%	145012	U10	IC SINGLE 2-INPUT AND GATE SMD	133552
R68	RES SMD0805 22.1K 1/8W 1%	145012	U11	IC SINGLE 2-INPUT AND GATE SMD	133552
R69	RES SMD0805 22.1K 1/8W 1%	145012	U12	IC SINGLE 2-INPUT AND GATE SMD	133552
R70	RES SMD0805 22.1K 1/8W 1%	145012	U13	IC MICRO 32-BIT SAM4S SMD	133875
R71	RES SMD0805 4.75K 1/8W 1%	145008	U15	IC 8 BIT DRIVER SMD	133461
R72	RES SMD0805 2.21K 1/8W 1%	145024	U20	IC EEPROM 256K BITS 3.3V SMD	133709
R73	RES SMD0805 47.5K 1/8W 1%	145013	U22	IC SINGLE NAND SCHMITT SMD	133724
R74	RES SMD0805 3.32K 1/8W 1%	145026	U23	IC SINGLE NAND SCHMITT SMD	133724
R75	RES SMD0805 22.1 1/8W 1%	145003	U24	IC OPTOCOUPLER SCHMITT SMD	133879
R76	RES SMD0805 475K 1/8W 1%	145040	U25	IC SINGLE 2 INPUT OR GATE SMD	133700
R77	RES SMD0805 150 1/8W 1%	145019	U26	IC DUAL RS232 3V W/SHUTDWN SMD	133707
R78	RES SMD0805 2.21K 1/8W 1%	145024	U27	IC MONO MULTIVIBRATOR SMD	133738
R79	RES SMD0805 22.1K 1/8W 1%	145012	U28	IC SINGLE 2-INPUT AND GATE SMD	133502
R80	RES SMD0805 10 1/8W 1%	145017	U29	IC 8 BIT DRIVER SMD	133461
R81	RES SMD0805 4.75K 1/8W 1%	145008	U30	IC 8 BIT DRIVER SMD	133461
R82	RES SMD0805 4.75K 1/8W 1%	145008	U31	IC SINGLE 2-INPUT NAND GATE SMD	133501
R83	RES SMD0805 2.21K 1/8W 1%	145024	U32	IC SINGLE 2-INPUT NAND GATE SMD	133501
R84	RES SMD0805 22.1K 1/8W 1%	145012	U34	IC SINGLE NAND SCHMITT SMD	133724
R85	RES SMD0805 22.1K 1/8W 1%	145012	U40	IC SINGLE NAND SCHMITT SMD	133724
R86	RES SMD0805 3.32K 1/8W 1%	145026	Y1	CRYSTAL 12.00MHZ SMD	180103
R87	RES SMD0805 22.1 1/8W 1%	145003	R110	RES SMD0805 OPEN	NONE
R88	RES SMD0805 150 1/8W 1%	145019			
R89	RES SMD0805 10 1/8W 1%	145017			
R90	RES SMD0805 4.75K 1/8W 1%	145008			
R91	RES SMD0805 22.1K 1/8W 1%	145012			
R92	RES SMD0805 4.75K 1/8W 1%	145008			
R93	RES SMD0805 4.75K 1/8W 1%	145008			
R94	RES SMD0805 4.75K 1/8W 1%	145008			
R95	RES SMD0805 4.75K 1/8W 1%	145008			
R96	RES SMD0805 4.75K 1/8W 1%	145008			



POWER SUPPLY PCB 751785

C1	CAP ELECT 100UF 25V SMD	066605
C2	CAP ELECT 10UF 50V SMD	066602
C3	CAP ELECT 3300UF 35V	066509
C4	CAP ELECT 3300UF 35V	066509
C5	CAP ELECT 3300UF 35V	066509
C6	CAP MONO .1uF 50V ±20% X7R SMD0805	061365

PARTS LIST (Cont'd.)

3 POWER SUPPLY PCB 751785 (Cont'd.)

Ref. No.	Description	Part No.	Ref. No.	Description	Part No.
C7	CAP ELECT 100UF 25V SMD	066605	J2	HEADER 9 CIRCUIT POST NATURAL	117724
C8	CAP ELECT 100UF 25V SMD	066605	J3	CONN 18 PIN FFC SMD	118003
C9	CAP POLYPROP 0.047UF 10% 275V	064466	L1	FERRITE 60 OHM 5 AMP SMD	076025
C10	CAP ELECT 100UF 25V SMD	066605	PCB1	PC BD POWER SUPPLY	130290
C11	CAP MONO .1uF 50V ±20% X7R SMD0805	061365	Q1	TRANSISTOR NCH MOSFET 800V SMD	132353
C12	CAP ELECT 100UF 25V SMD	066605	Q2	TRANSISTOR NPN A05 SMD	132333
C13	CAP MONO .1uF 50V ±20% X7R SMD0805	061365	Q3	TRANSISTOR NPN 300V BF420	132351
C14	CAP ELECT 220UF 25V SMD	066606	R1	RES SMD0805 4.75K 1/8W 1%	145008
C15	CAP ELECT 3300UF 35V	066509	R2	RES SMD0805 1.5K 1/8W 1%	145022
C16	CAP ELECT 3300UF 35V	066509	R3	RES SMD0805 475 1/8W 1%	145020
C17	CAP ELECT 3300UF 35V	066509	R4	POLYSWITCH 1.85A 72V	144716
C18	CAP ELECT 10UF 50V SMD	066602	R5	RES SMD0805 33.2K 1/8W 1%	145033
C19	CAP MONO .1uF 50V ±20% X7R SMD0805	061365	R6	RES SMD0805 681 1/8W 1%	145002
C20	CAP ELECT 220UF 25V SMD	066606	R7	RES SMD0805 OPEN	NONE
C21	CAP ELECT 100UF 25V SMD	066605	R8	RES SMD0805 8.25K 1/8W 1%	145009
C22	CAP MONO .1uF 50V ±20% X7R SMD0805	061365	R9	RES SMD0805 33.2K 1/8W 1%	145033
C23	CAP ELECT 220UF 25V SMD	066606	R10	RES SMD0805 681 1/8W 1%	145002
C24	CAP ELECT 100UF 25V SMD	066605	R11	POLYSWITCH 1.85A 72V	144716
C25	CAP ELECT 10000UF 10V	066595	R12	RES SMD0805 OPEN	NONE
C26	CAP ELECT 10000UF 10V	066595	R13	RES SMD0805 8.25K 1/8W 1%	145009
C27	CAP MONO .1uF 50V ±20% X7R SMD0805	061365	R14	RES SMD0805 475 1/8W 1%	145020
C28	CAP ELECT 220UF 25V SMD	066606	R15	RES SMD0805 4.75K 1/8W 1%	145008
C29	CAP NPO 1000pF 100V 5% SMD0805	061391	R16	RES SMD0805 1.5K 1/8W 1%	145022
C30	CAP MONO .1uF 50V ±20% X7R SMD0805	061365	R18	RES SMD0805 33.2K 1/8W 1%	145033
C31	CAP 10uF 20% 16V X5R SMD0805	061392	R19	RES SMD0805 681 1/8W 1%	145002
C32	CAP POLYPROP 0.047UF 10% 275V	064466	R20	RES SMD0805 OPEN	NONE
C33	CAP ELECT 10UF 250V	066558	R21	RES SMD0805 8.25K 1/8W 1%	145009
C34	CAP ELECT 22UF 450V	066597	R22	RES SMD0805 33.2K 1/8W 1%	145033
C35	CAP POLYPROP 0.047UF 10% 275V	064466	R23	RES SMD0805 681 1/8W 1%	145002
C36	CAP 3300PF 250V UL/CSA	061312	R24	POLYSWITCH 3.00A 72V	144722
C37	CAP POLYPROP 0.22UF 400V 20%	064438	R25	RES SMD0805 OPEN	NONE
C38	CAP ELECT 220UF 25V SMD	066606	R26	RES SMD0805 8.25K 1/8W 1%	145009
C39	CAP ELECT 22UF 450V	066597	R27	RES SMD0805 475 1/8W 1%	145020
D1	DIODE RECTIFIER 1000V 1A SMD	070225	R28	RES SMD0805 150K 1/8W 1%	145037
D2	DIODE RECTIFIER 1000V 1A SMD	070225	R29	POLYSWITCH 3.00A 72V	144722
D3	DIODE RECTIFIER 1000V 1A SMD	070225	R30	RES SMD0805 47.5K 1/8W 1%	145013
D4	DIODE RECTIFIER 1000V 1A SMD	070225	R31	RES SMD0805 2.21K 1/8W 1%	145024
D5	DIODE SCHOTTKY 40V 2A SMD	070210	R32	RES SMD0805 47.5K 1/8W 1%	145013
D6	DIODE SCHOTTKY 40V 2A SMD	070210	R33	RES SMD0805 2.21K 1/8W 1%	145024
D7	DIODE RECTIFIER 1000V 1A SMD	070225	R34	RES TF 33 1% 0.1W SMD0805	145080
D8	DIODE RECTIFIER 1000V 1A SMD	070225	R35	RES SMD0805 1.82K 1/8W 1%	145023
D9	DIODE ZENER 10V 5% 0.35W SMD	070222	R36	RES SMD0805 150K 1/8W 1%	145037
D10	DIODE RECTIFIER 1000V 1A SMD	070225	R37	RES SMD0805 221K 1/8W 1%	145038
D11	DIODE RECTIFIER 1000V 1A SMD	070225	R38	RES SMD0805 221K 1/8W 1%	145038
D12	DIODE RECTIFIER 1000V 1A SMD	070225	R39	RES SMD0805 221K 1/8W 1%	145038
D13	DIODE RECTIFIER 1000V 1A SMD	070225	R40	RES SMD0805 150K 1/8W 1%	145037
D14	DIODE RECTIFIER 1000V 1A SMD	070225	R41	RES SMD0805 1M 1/8W 1%	145042
D15	DIODE RECTIFIER 1000V 1A SMD	070225	R42	RES SMD0805 1K 1/8W 1%	145007
D16	DIODE RECTIFIER 1000V 1A SMD	070225	R43	RES SMD0805 33.2K 1/8W 1%	145033
D17	DIODE RECTIFIER 1000V 1A SMD	070225	U1	IC REG POS ADJ 1.5A SMD	133822
D18	DIODE ESD SUPPRESSOR SMD	070198	U2	IC REG POS ADJ 1.5A SMD	133822
D19	DIODE ESD SUPPRESSOR SMD	070198	U3	IC REG POS ADJ 1.5A SMD	133822
D20	DIODE ESD SUPPRESSOR SMD	070198	U4	IC REG NEG ADJ 1.5A SMD	133821
D21	DIODE ESD SUPPRESSOR SMD	070198	U5	IC REG NEG ADJ 1.5A SMD	133821
F1	FUSE 1/8A SLO-BLO 5X20 IEC	089128	U6	IC REG NEG ADJ 1.5A SMD	133821
FH1	HOLDER FUSE 5X20 PCB MOUNT	178159	U7	IC REG 1.2A LO-DROP ENABLE SMD	133717
GP1	TERMINAL PC MOUNT 6-32	117975	U8	IC REG POS ADJ 1.5A SMD	133822
J1	CONN 25 PIN D RECEPTACLE	117901			

PARTS LIST (Cont'd.)

4 DISPLAY/PUSHBUTTON PCB 751786 (Cont'd.)

5 Ref. No.	Description	Part No.	Ref. No.	Description	Part No.
C1	CAP 10uF 20% 16V X5R SMD0805	061392	R1	RES SMD0805 22.1 1/8W 1%	145003
C2	CAP MONO .1uF 50V ±20% X7R SMD	061365	R2	RES SMD0805 150 1/8W 1%	145019
C3	CAP 10uF 20% 16V X5R SMD0805	061392	R3	RES SMD0805 10K 1/8W 1%	145010
C4	CAP X7R .47uF 20% 50V SMD0805	061373	R4	RES SMD0805 6.81K 1/8W 1%	145029
C5	CAP MONO .1uF 50V ±20% X7R SMD	061365	R5	RES SMD0805 2.74K 1/8W 1%	145025
C8	CAP MONO .1uF 50V ±20% X7R SMD	061365	R6	RES SMD0805 22.1K 1/8W 1%	145012
C11	CAP ELECT 470UF 16V SMD	066607	R7	RES SMD0805 1K 1/8W 1%	145007
C12	CAP MONO .1uF 50V ±20% X7R SMD	061365	R8	RES SMD0805 475K 1/8W 1%	145040
C13	CAP MONO .1uF 50V ±20% X7R SMD	061365	R9	RES SMD0805 475 1/8W 1%	145020
D1	DIODE SMALL SIGNAL 4148 SMD	070199	R10	RES SMD0805 2.21K 1/8W 1%	145024
DS1	ASSY INFO VFD	750913	R11	RES SMD0805 2.21K 1/8W 1%	145024
DS2	LED RED HIGH EFFICIENCY 5MM	058207	R12	RES SMD0805 4.75K 1/8W 1%	145008
DS3	LED GRN REV MOUNT SMD	058212	R13	RES SMD0805 2.21K 1/8W 1%	145024
DS4	LED RED HIGH EFFICIENCY 5MM	058207	R14	RES SMD0805 10K 1/8W 1%	145010
DS5	LED RED HIGH EFFICIENCY 5MM	058207	R15	RES SMD0805 10K 1/8W 1%	145010
DS6	LED RED HIGH EFFICIENCY 5MM	058207	R17	RES SMD0805 1.21k 1/8W 1%	145021
DS7	LED GRN REV MOUNT SMD	058212	R19	RES SMD0805 2.74K 1/8W 1%	145025
DS8	LED GRN REV MOUNT SMD	058212	R20	RES SMD0805 1.21k 1/8W 1%	145021
DS9	LED GRN REV MOUNT SMD	058212	R21	RES SMD0805 2.74K 1/8W 1%	145025
DS10	LED GRN REV MOUNT SMD	058212	R22	RES SMD0805 2.74K 1/8W 1%	145025
DS11	LED GRN REV MOUNT SMD	058212	R23	RES SMD0805 2.74K 1/8W 1%	145025
DS12	LED GRN REV MOUNT SMD	058212	R24	RES SMD0805 2.74K 1/8W 1%	145025
DS13	LED GRN REV MOUNT SMD	058212	R26	RES SMD0805 2.74K 1/8W 1%	145025
DS14	LED GRN REV MOUNT SMD	058212	R27	RES SMD0805 10K 1/8W 1%	145010
DS15	LED GRN REV MOUNT SMD	058212	R28	RES SMD0805 2.74K 1/8W 1%	145025
DS16	LED GRN REV MOUNT SMD	058212	R29	RES SMD0805 2.74K 1/8W 1%	145025
DS17	LED GRN REV MOUNT SMD	058212	R30	RES SMD0805 2.74K 1/8W 1%	145025
DS18	LED GRN REV MOUNT SMD	058212	R31	RES SMD0805 2.74K 1/8W 1%	145025
DS20	LED GRN REV MOUNT SMD	058212	R33	RES SMD0805 2.74K 1/8W 1%	145025
DS21	LED GRN REV MOUNT SMD	058212	R34	RES SMD0805 2.74K 1/8W 1%	145025
DS23	LED GRN REV MOUNT SMD	058212	R36	RES SMD0805 2.74K 1/8W 1%	145025
DS24	LED GRN REV MOUNT SMD	058212	R37	RES SMD0805 2.74K 1/8W 1%	145025
DS26	LED GRN REV MOUNT SMD	058212	R39	RES SMD0805 2.74K 1/8W 1%	145025
IR1	SENSOR IR 38KHZ 3V-5V RA	121066	R41	RES SMD0805 10K 1/8W 1%	145010
J1	CONN 23 PIN FFC SMD	118004	R43	RES SMD0805 10K 1/8W 1%	145010
J2	CONNECTOR 4 PIN HEADER 2MM	118014	R70	RES SMD0805 4.75K 1/8W 1%	145008
J4	CONN 8 PIN FFC SMD	118118	S2	SWITCH ROT ENCODER 24 DETENT	146255
J7	CONNECTOR FFC 8 PIN	117915	S3	SWITCH ROT ENCODER 24 DETENT	146255
J9	TERMINAL STRIP 14 PIN .025 SQ	117647	S4	SWITCH TACT 260GF 5MM SMD	150072
L1	INDUCTOR 10UH 30% SMD	122438	S5	SWITCH TACT 260GF 5MM SMD	150072
MP1	SPACER LED 3/16 IN	017642	S6	SWITCH TACT 260GF 5MM SMD	150072
MP2	SPACER LED 3/16 IN	017642	S7	SWITCH TACT 260GF 5MM SMD	150072
MP3	SPACER LED 3/16 IN	017642	S8	POT ROTARY SWITCH QUADRATURE	146255
MP4	SPACER LED 3/16 IN	017642	U2	IC SINGLE NAND SCHMITT SMD	133724
PCB1	PC BD DISPLAY	130291	U4	IC SINGLE NAND SCHMITT SMD	133724
Q1	TRANSISTOR PNP A55 SMD	132334	U5	IC 8 BIT DRIVER SMD	133461

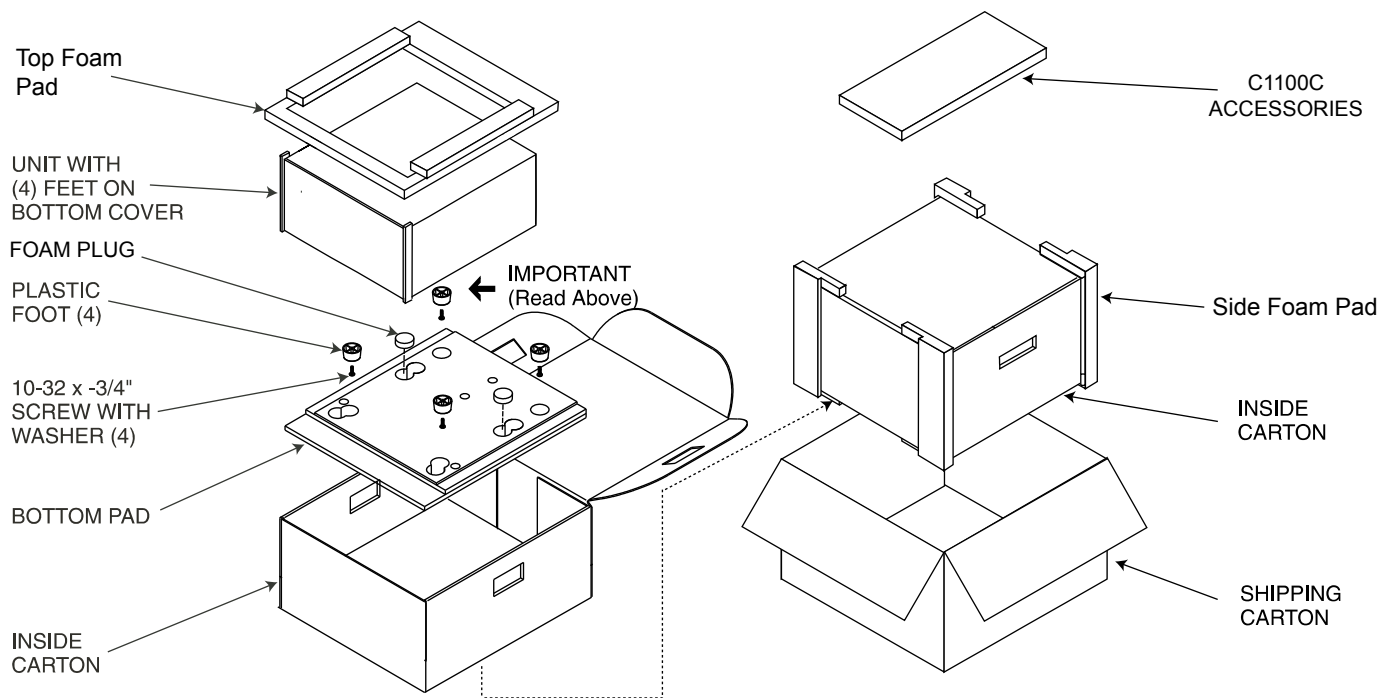
REPACKING INSTRUCTIONS

In the event it is necessary to repack the equipment for shipment, the equipment must be packed exactly as shown below. It is very important that the four plastic feet are attached to the bottom of the equipment. This will ensure the proper equipment location on the bottom pad. Failure to do this will result in shipping damage.

Use the original shipping carton and interior parts only if they are all in good serviceable condition. If a shipping carton or any of the interior part(s) are needed, please call or write Customer Service Department of McIntosh Laboratory. Please see the Part List for the correct part numbers.

Note: The McIntosh C1100C Controller and C1000T Tube Preamplifier use the same shipping carton. The C1100C Controller Shipping Carton also includes the "C1100C Accessories" separate package.

<u>Quantity</u>	<u>Part Number</u>	<u>Description</u>
1	033838	Shipping carton only
2	033837	Side foam pad
1	033836	Inside carton only
1	034414	Top foam pad
1	034301	Bottom pad
4	017937	Plastic foot
4	400159	#10-32 x 3/4" screw
4	404080	#10-7/16" Flat washer



C1100

CONTROLLER

SERIAL NO. AEE1001 And Above



The continuous improvement of its products is the policy of McIntosh Laboratory Incorporated, who reserve the right to improve design without notice. Because of the constant upgrading of McIntosh products' circuitry and components, the Company cannot insure, and does not warrant, the accuracy of the within schematic material, which is intended for information only.

McINTOSH LABORATORY, INC., 2 CHAMBERS STREET, BINGHAMTON, NEW YORK 13903 Printed in U.S.A. Part Number 041656