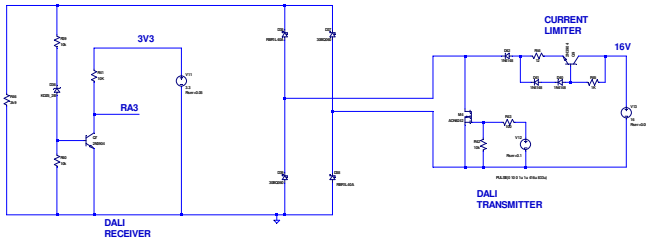
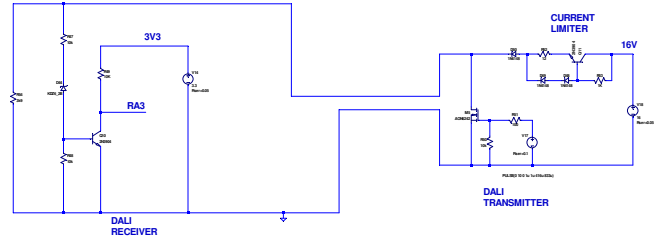


**THIS CIRCUIT DOESNT WORK.....RECEIVED PULSES
AT RA3 ARE INCORRECT.**



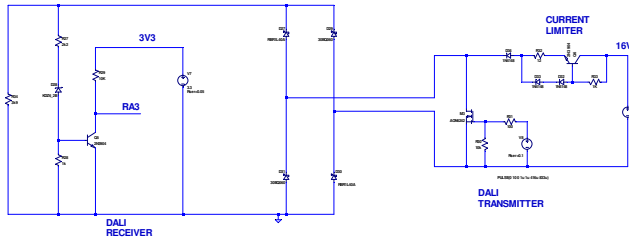
THIS CIRCUIT WORKS FINE AND GIVES CORRECT RA3 RECEIVED PULSES



**POTENTIAL IMPROVEMENTS.....FROM LOWEST COMPONENT
COUNT TO HIGHER COMPONENT COUNT**

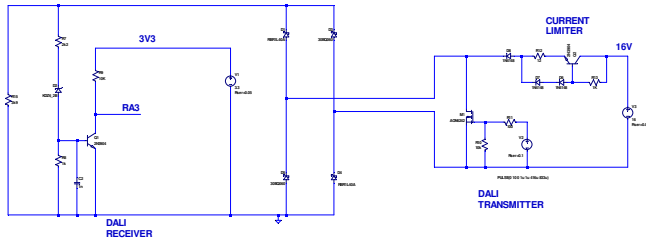


A

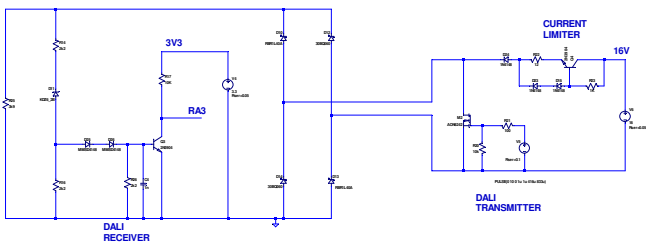


**I HOPE THIS CIRCUIT WORKS, AS IT MEANS
WE DONT HAVE TO RE-SPIN THE BOARD.**

B



C



D

