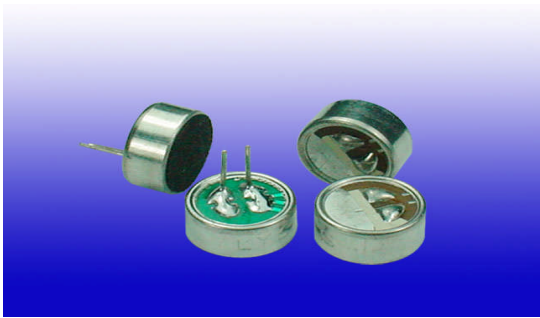
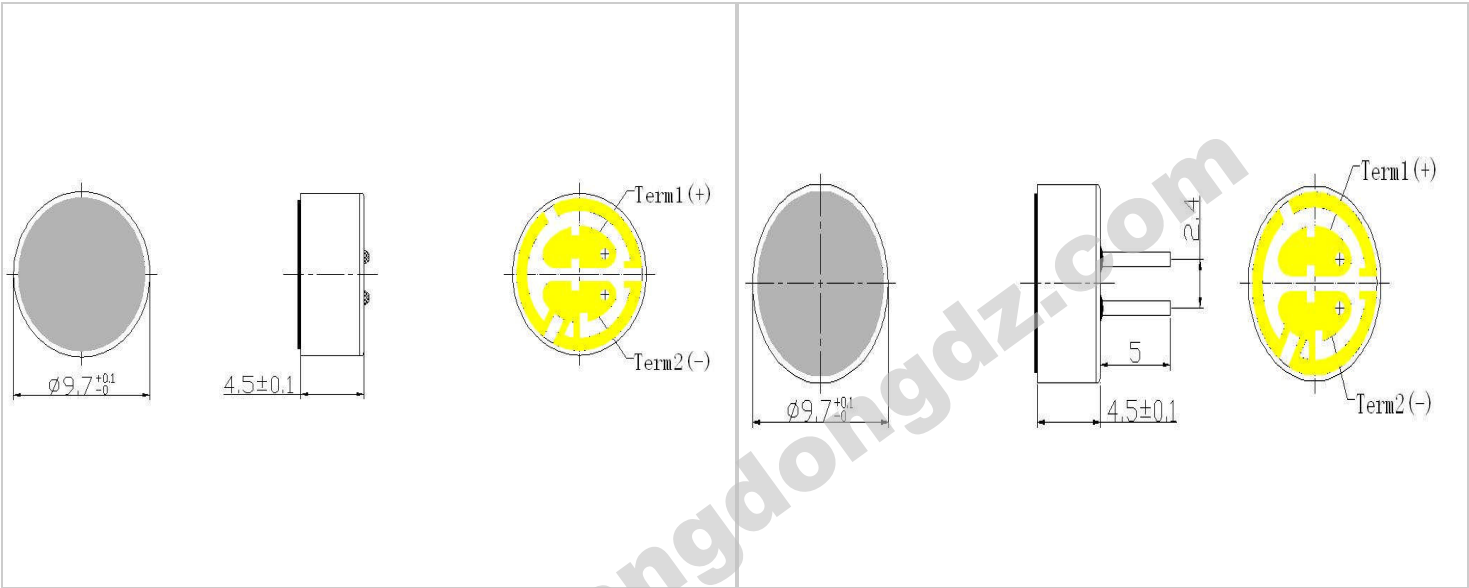


LYS-EM54F/EM54FP



产品特性:	Features:
◆全指向性	◆Omni-directional
◆适用于电话机或其它用途	◆Used for telephone or others

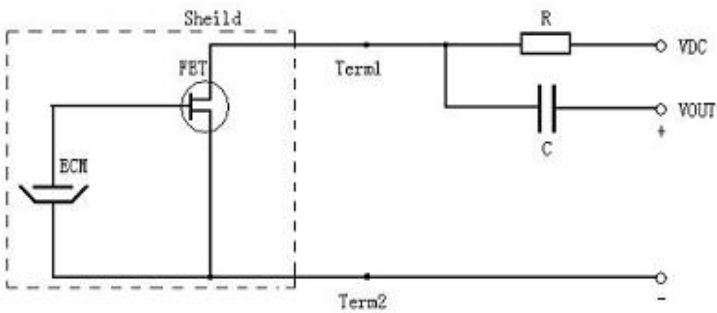
机械尺寸图 Dimensions (mm):



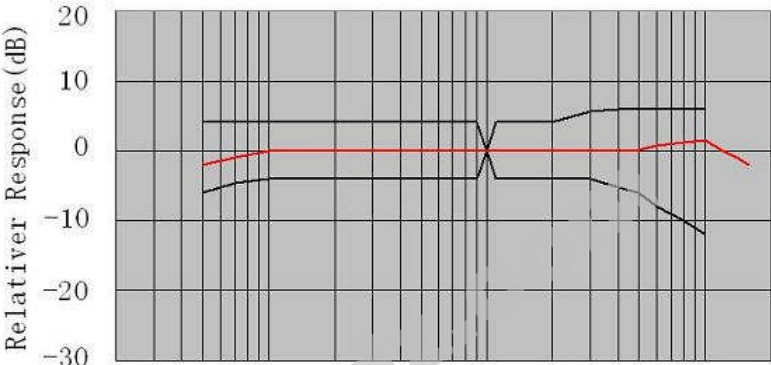
参数说明:

机械尺寸 Dimensions (mm):	Φ9.7 × 4.5
方向性 Directivity:	Omni-directional
测试条件 Test Condition:	3.0V, 2.2KΩ
灵敏度 Sensitivity:	-38±3dB, -40±3dB, -42±3dB, -44±3dB
工作电流 Current Consumption:	Max. 0.5mA
最大工作电压 Max. Working Voltage:	10V
灵敏度衰减 Sensitivity Reduction:	Within -3dB at 1.5V compare to 3.0V
频率范围 Frequency Range:	50~12000Hz
信噪比 S/N Ratio:	More than 58dB
重量 Weight:	Max. 0.8g
存储温度 Storage Temp.:	-25~+65℃

测试线路 Schematic Circuit:



频响曲线 Frequency Response:



www.guangdong.com