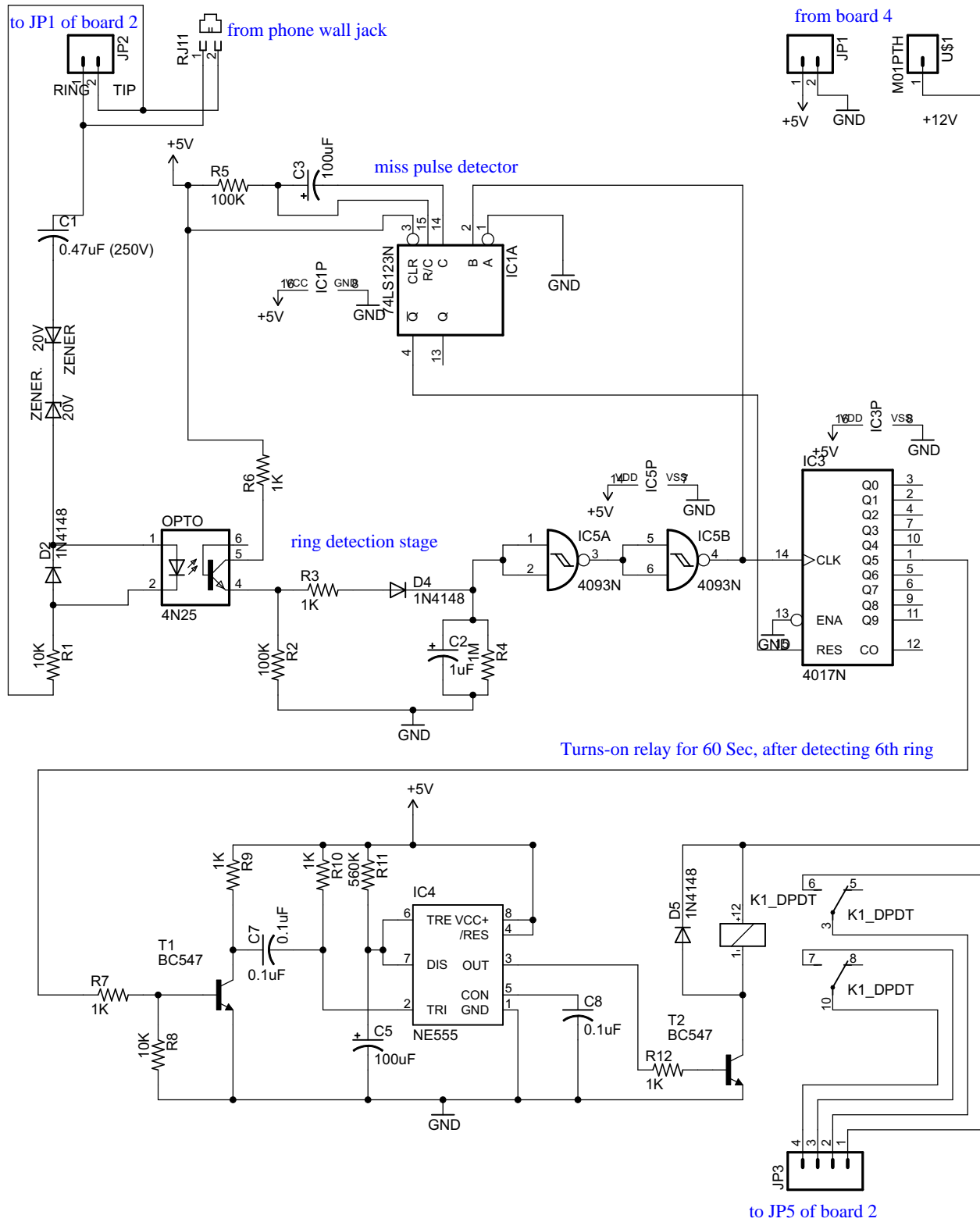


# HOME AUTOMATION USING DTMF TOUCH TONE

Telephone based Device controller

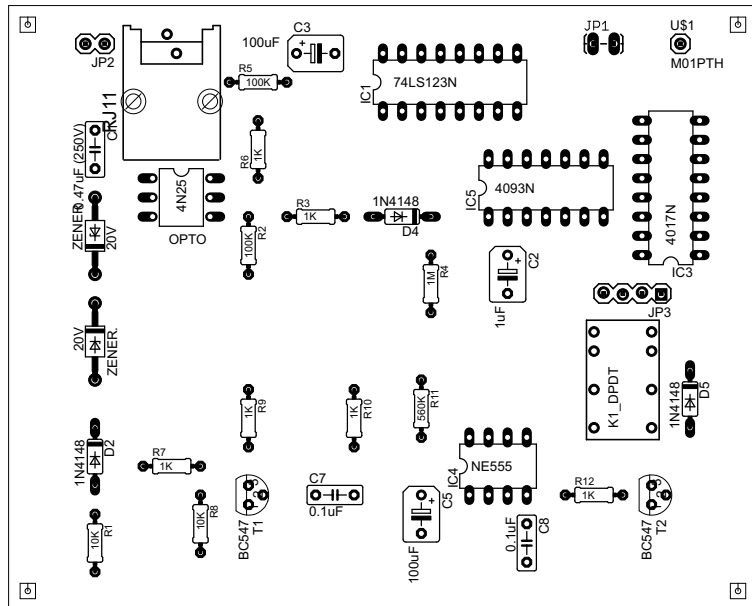
BOARD 1

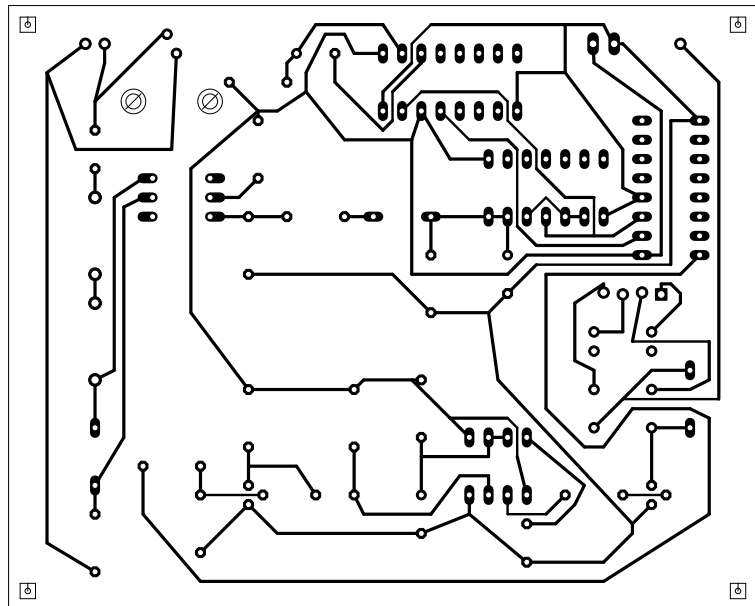


Date: 3/8/2006 2:27:08 AM

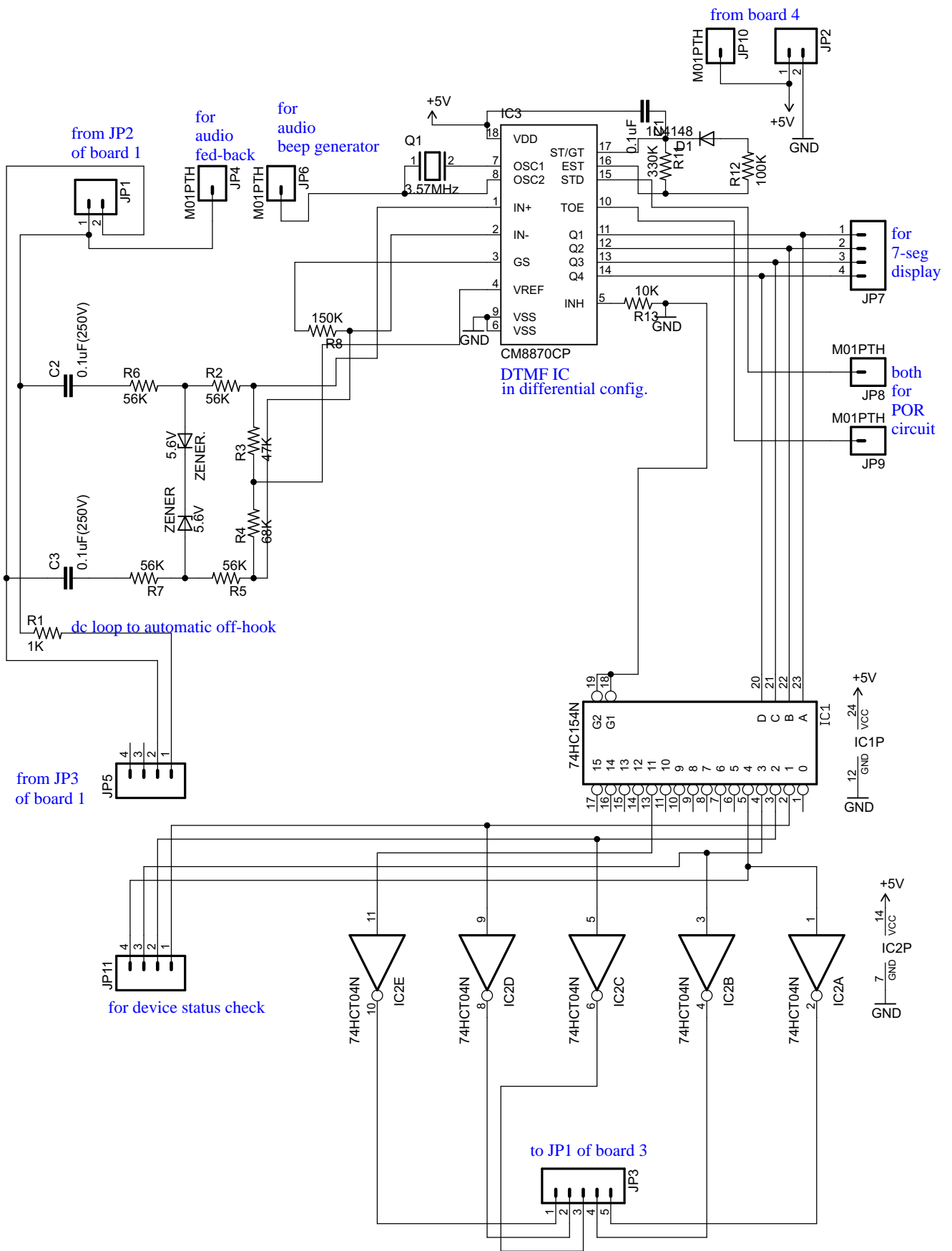
TITLE: ring\_detect

Sheet: 1/1





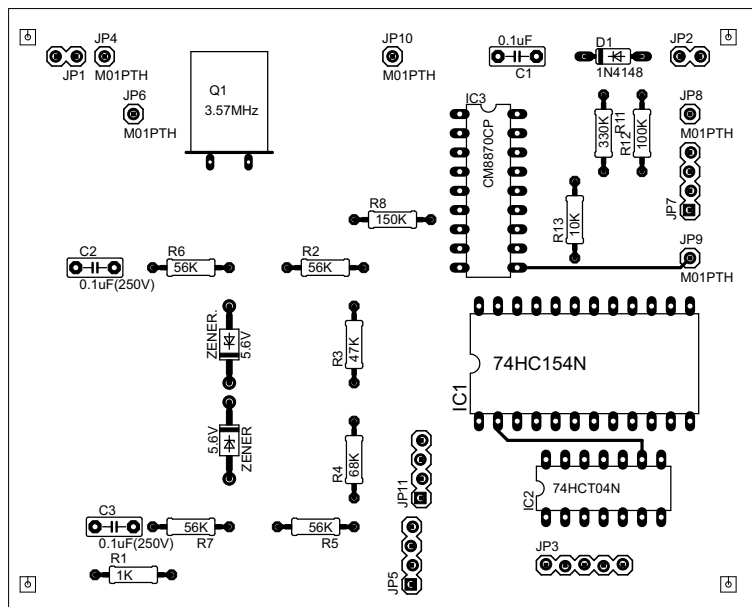
# BOARD 2 decoding section

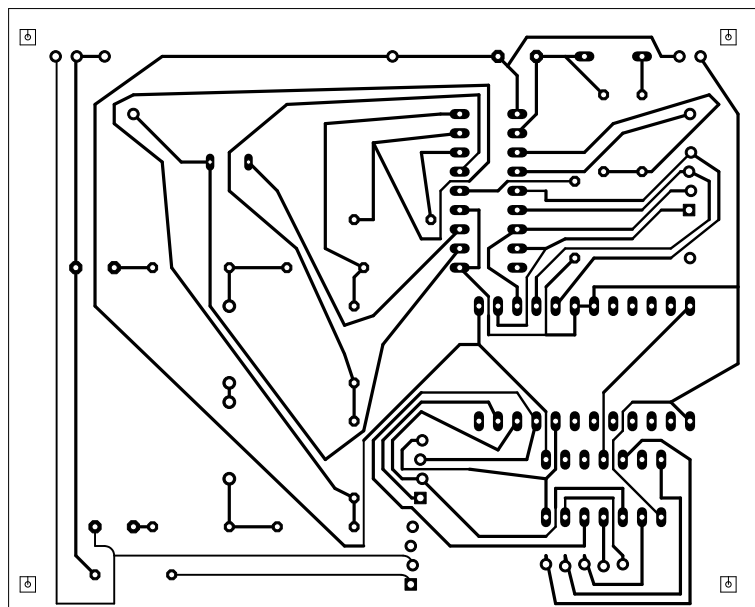


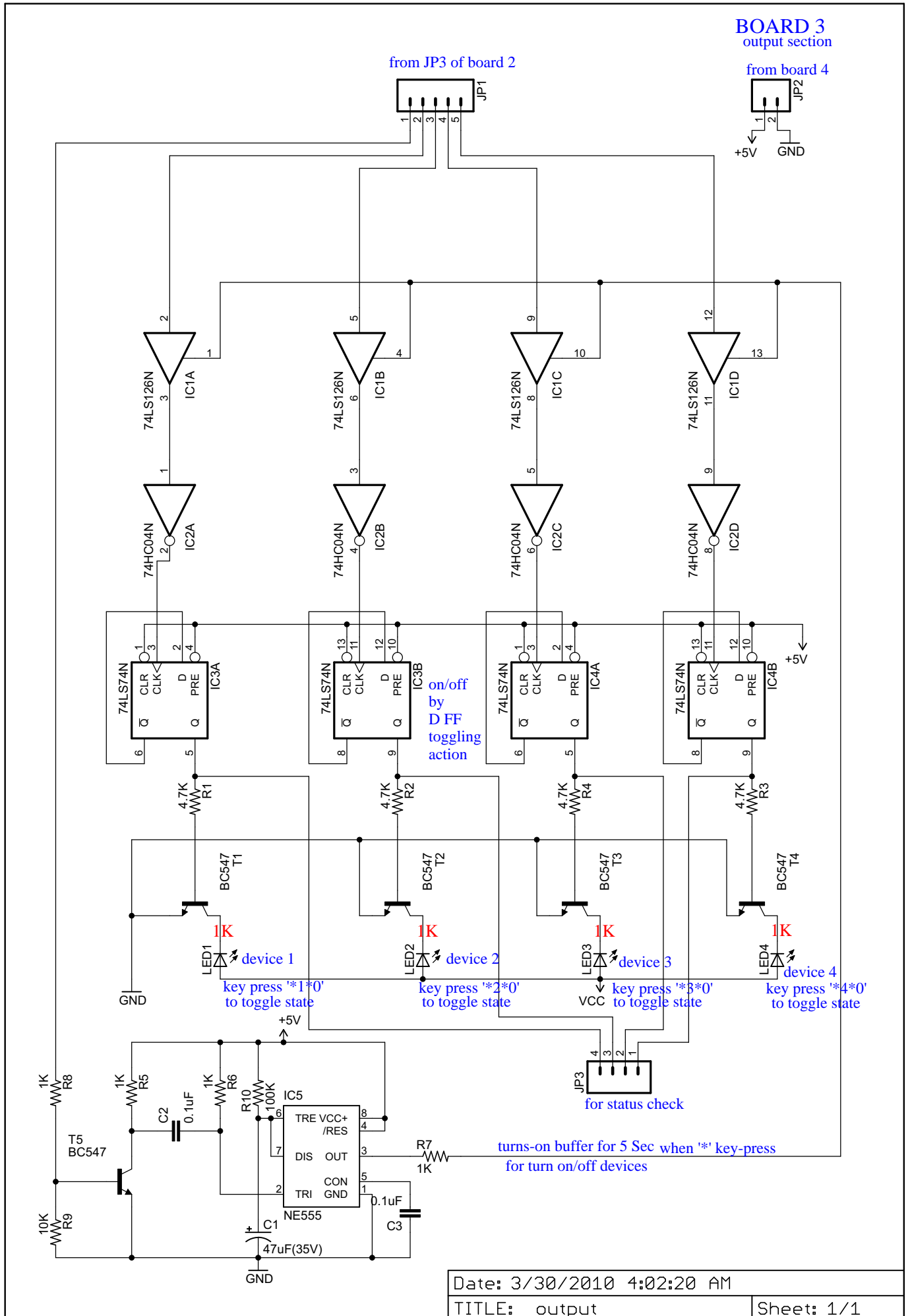
Date: 3/8/2006 3:26:05 AM

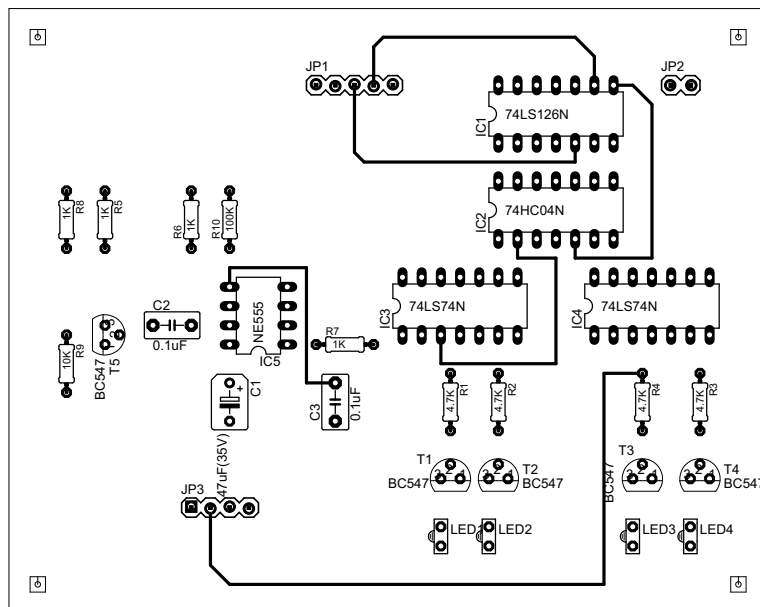
TITLE: decoding

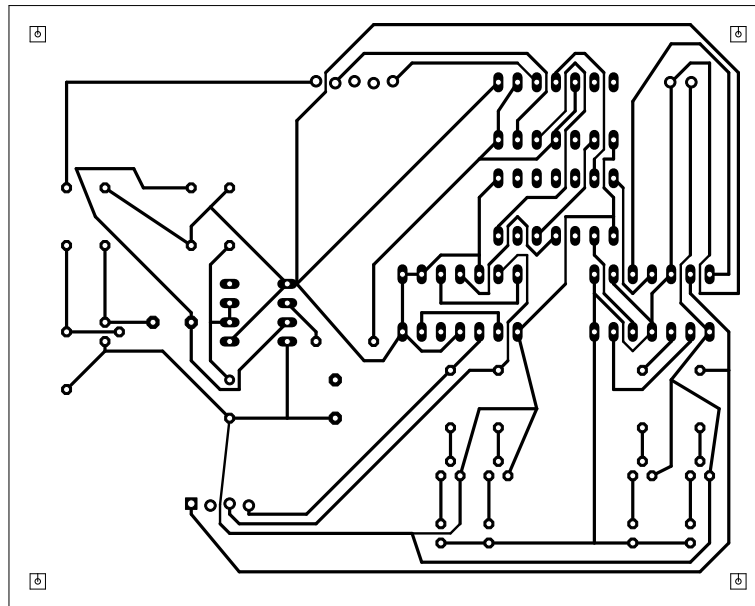
Sheet: 1/1



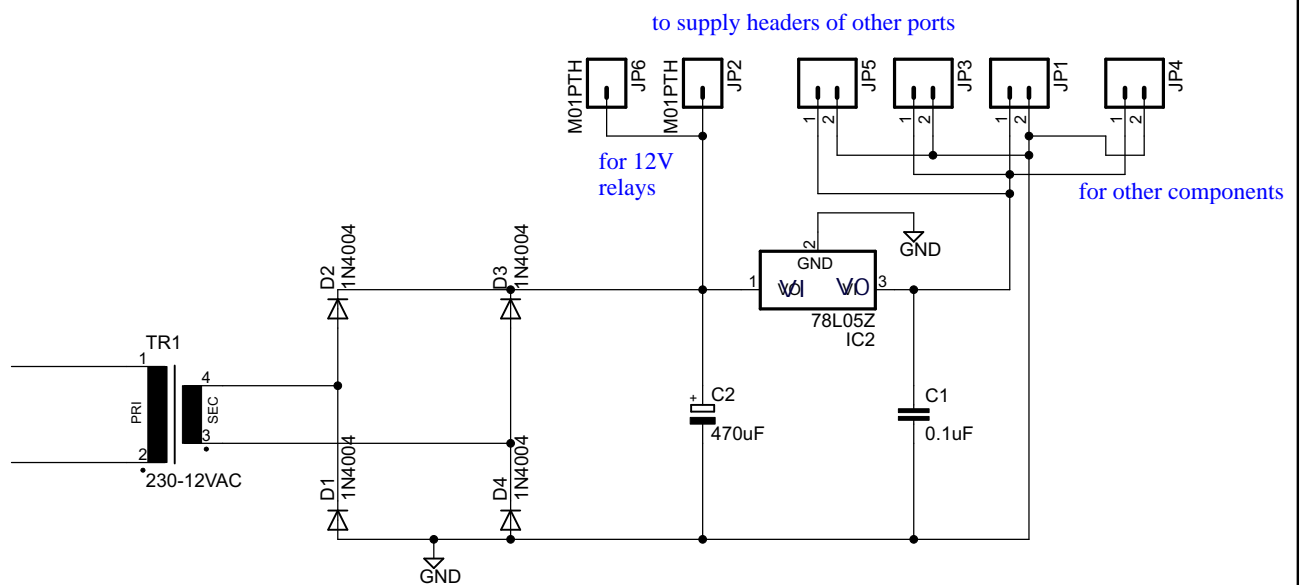


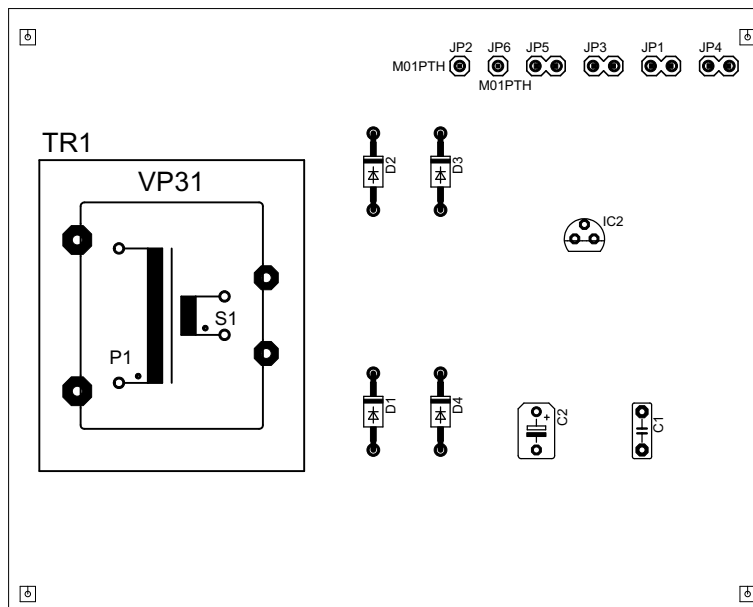


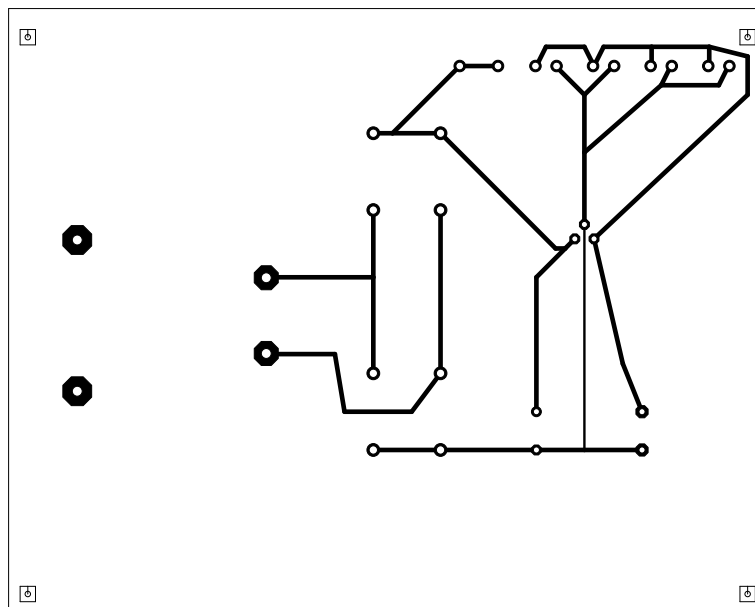




BOARD 4  
power supply section



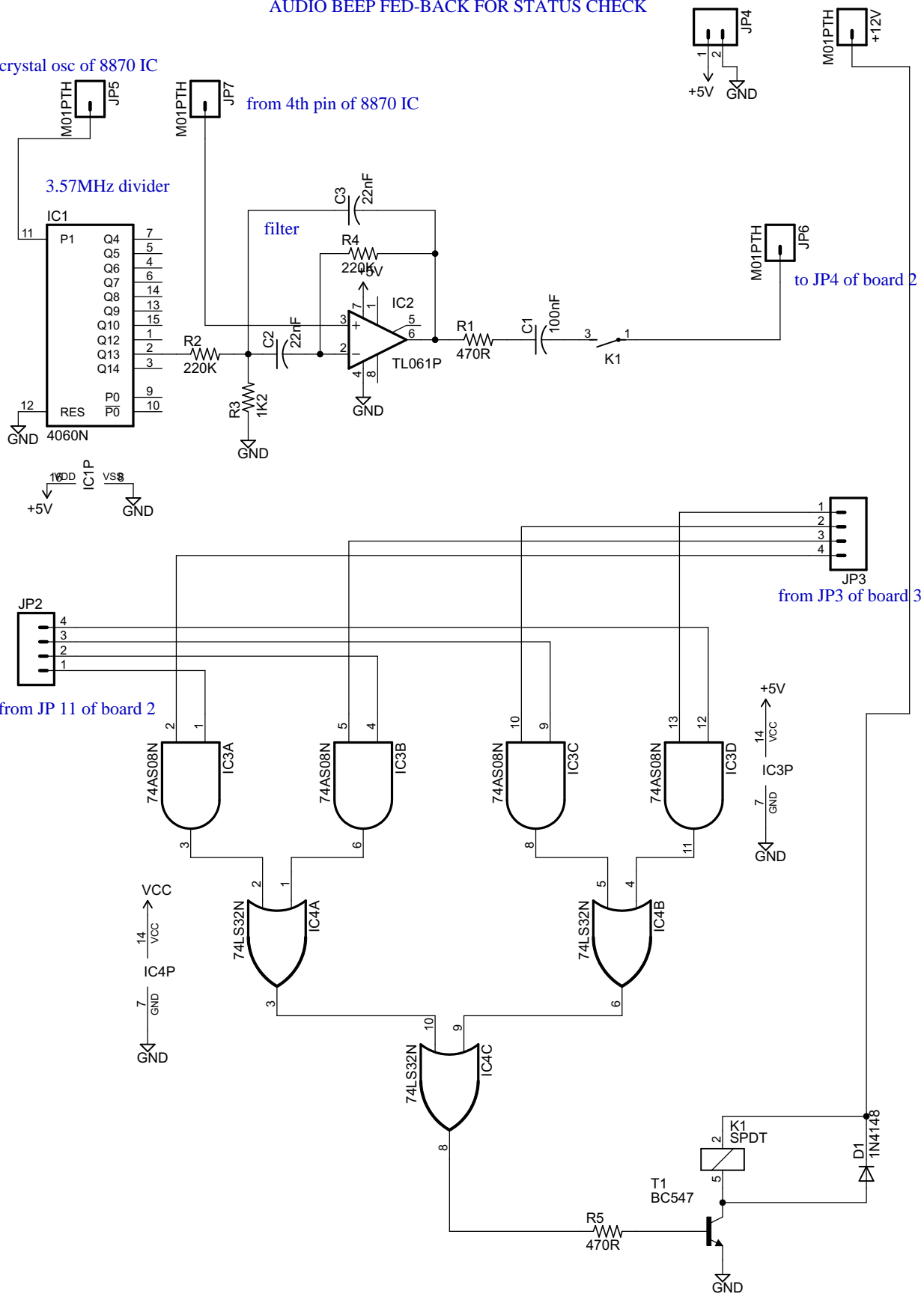




# AUDIO BEEP FED-BACK FOR STATUS CHECK

from crystal osc of 8870 IC

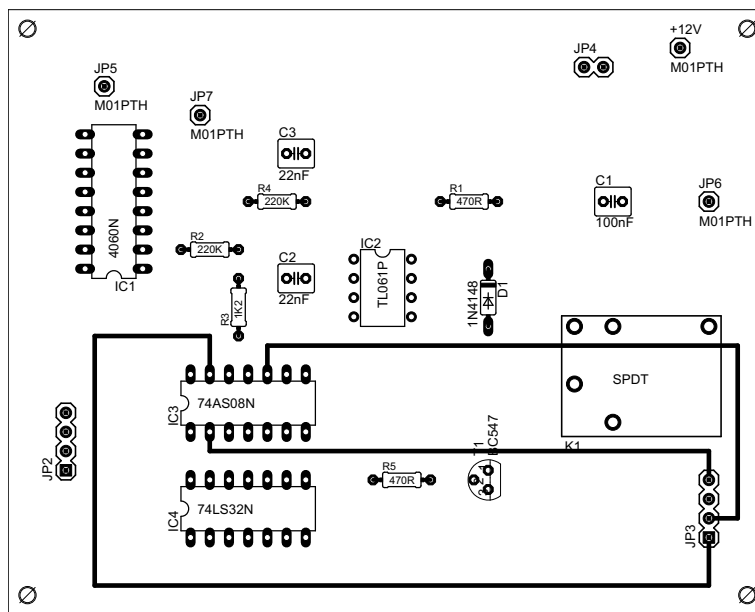
from 4th pin of 8870 IC

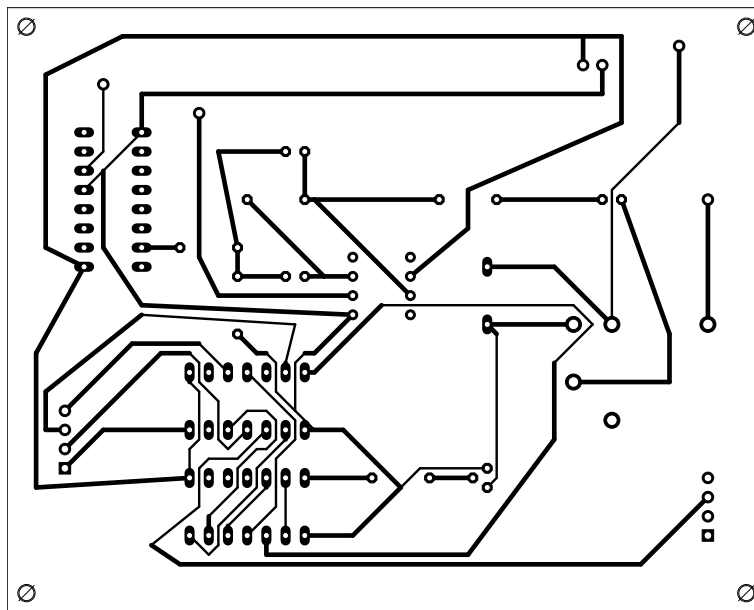


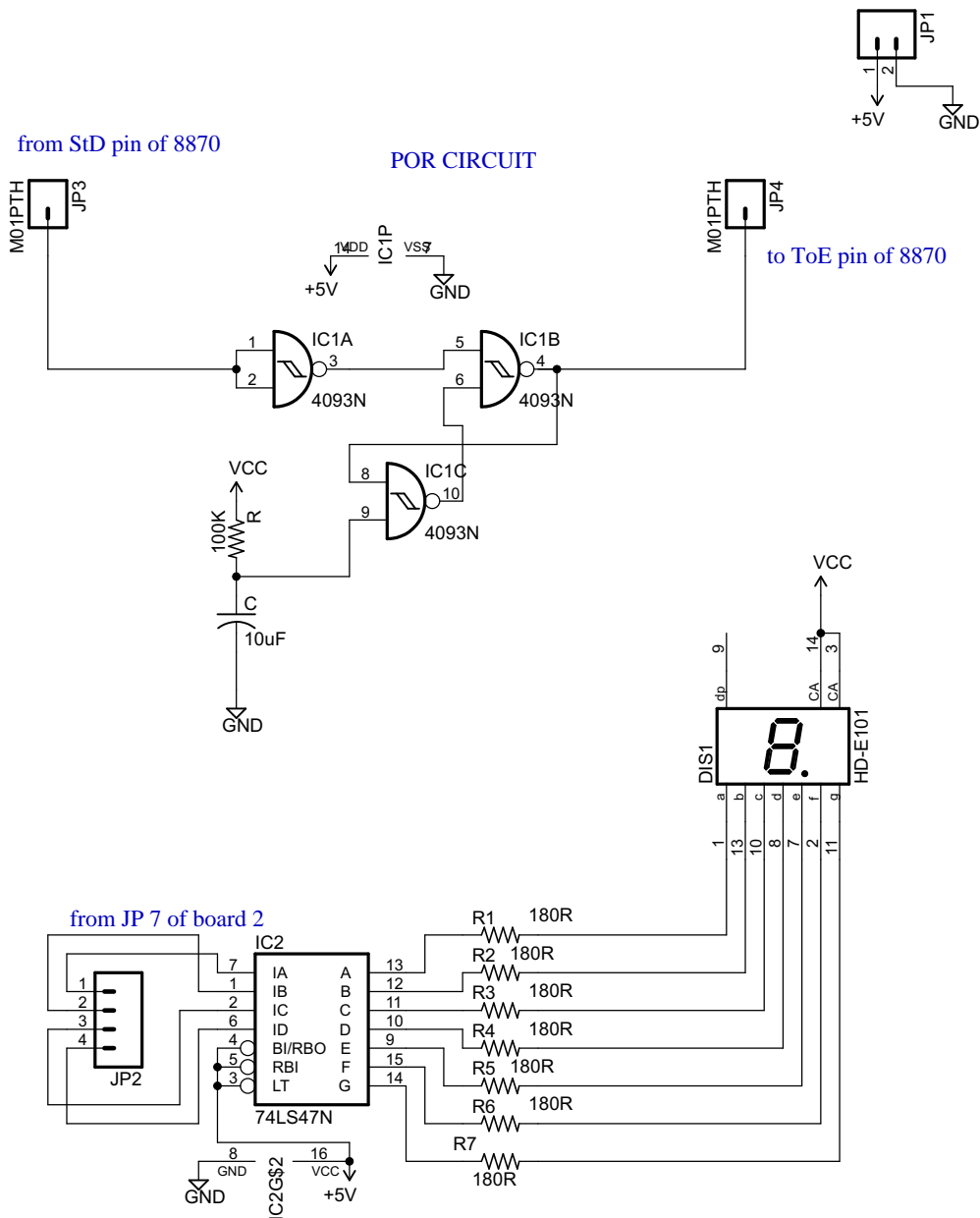
Date: 4/1/2010 9:42:53 AM

TITLE: audio\_beep

Sheet: 1/1







Date: 4/1/2010 11:26:16 AM

TITLE: POR\_LED

Sheet: 1/1

