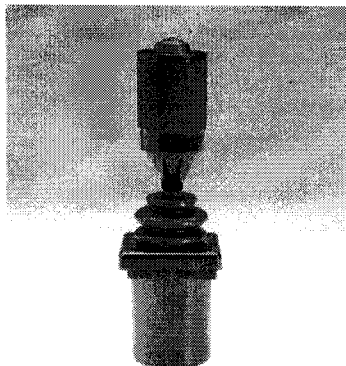




I Series - Inductive Joysticks



General Description

Inductive Joysticks

Many applications of joysticks involve frequent cycling of the controls, whether by hand or under the influence of vibration, causing degradation, unreliability & ultimately complete failure, in particular, wiping contacts. PML FlightLink I-Series Inductive Joysticks were developed during 1979 to eliminate such vulnerable mechanical contacts & thus achieves consistent performance, greater reliability & long life.

PML FlightLink I4-Series Inductive Joysticks, in production since 1980 enjoy an enviable reputation for performance & reliability under arduous conditions & are specified for many products by the worlds leaders in industrial & mobile applications. To the best of our belief I-Series Joysticks were the first inductive design to enter volume production & produced in higher volume than any other.

Since 1987 PML FlightLink "Dual Decode" units have been available to allow users to monitor the correct operation of the joysticks or systems. Since 199 I5 versions have been available in order to offer higher levels of RFI immunity. The combination of Dual-Decode & higher RFI protection ensures maximum operational safety, particularly under adverse conditions.

Features & Benefits

- Compact Design
- Long Life
- Single, Dual & Third Axis Versions
- Built In Safety Features
- EMC Protected
- Highly Responsive
- Smooth Centering
- Sealed To IP65
- Low Profile
- Simple Installation



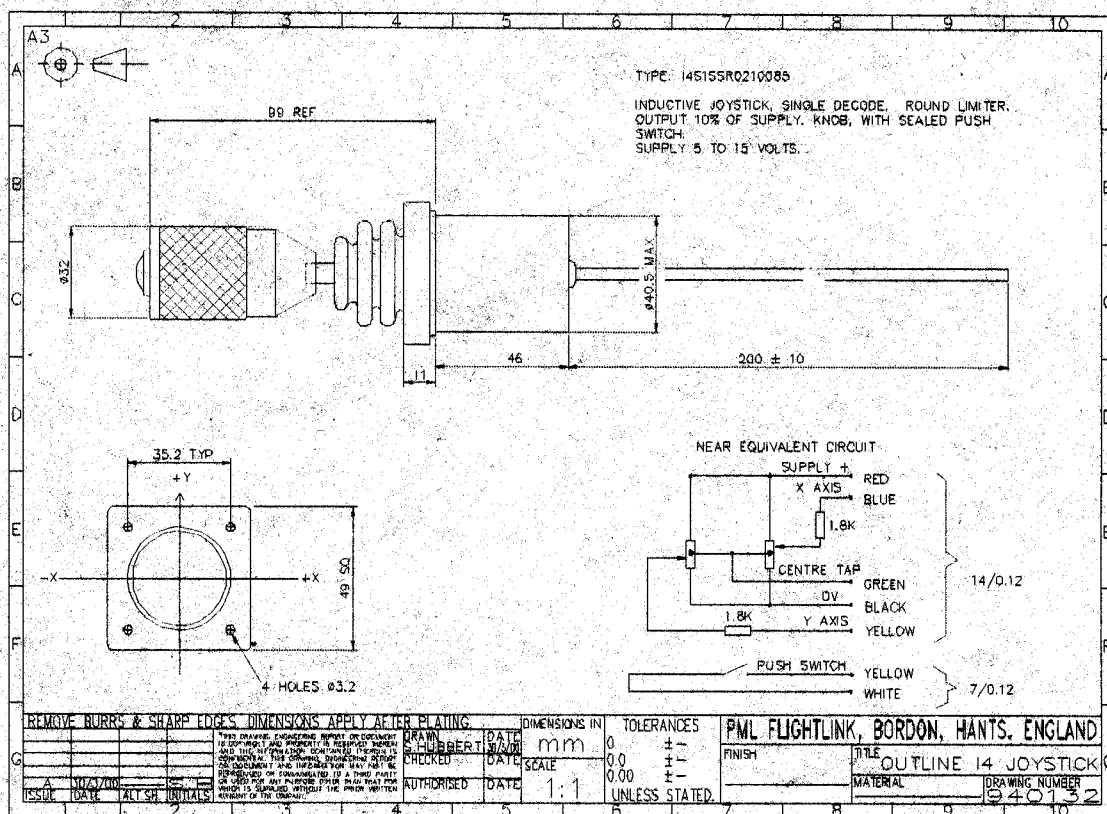
Joystick Specification

Electronic Specification

*	Supply Voltage (Vs)	4.70 V to 15 V max
	Signal Swing	Optional – up to a maximum of +/- 50% Vs
	Output Impedance	1.8k Ohms +/- 1%
	Preferred Load	10k Ohms to infinity
	Centre Tap Impedance	340 Ohms +/- 1%
	Signal Ripple	<1% of Output
*	Current Drain	15mA typ (Vs = 10V)
*	RFI Rejection	I4 = >10V/M properly Installed I4 = >40V/M properly Installed
*	ESD Immunity	>10kV properly Installed
*	Signal Matching (DD)	<5% of Maximum Swing
*	Operating Temperature	-20°C to 55°C
	PCB / Components	Surface Mount
*	<i>Some parameters depend on precise specifications – please refer to PML FlightLink for details</i>	

Mechanical Specification

Body	Glass-filled Nylon
Bezel	Acetal
Gimbal	Acetal
Gimbal Pins	Hardened Steel
Coil Formers	Acetal
Gaiter ("Boot")	PVC Standard
Lever	303 Stainless Steel
Lever Diameter	4.8 mm Nominal
Centre Plate	Brass
Centre Plate Screws	Brass
Cone Outer	Nylon
Cone Sleeve	Brass
Spring	Stainless Steel
Screening Can	Aluminum
Earthing Screws	Nickel-plated Brass
Star Washers	Zinc-plated Steel
Grommet	PVC
Flex Insulation	PVC
Flex Conductors	14/0.12-Tinned Copper



Notes:

This catalogue indicates standard product portfolio, further options do exist & are available on request

PML FlightLink a B. Elliott Ltd. Company

PML FlightLink Ltd.
Bordon Trading Estate
Oakhanger Road
Bordon
Hampshire
GU35 9HY

Tel: 44 (0) 1420 473033

Fax: 44 (0) 1420 477640

E-mail: sales@pmlflightlink.com



PML FlightLink reserve the write to change content with out prior notification



Installation Details

