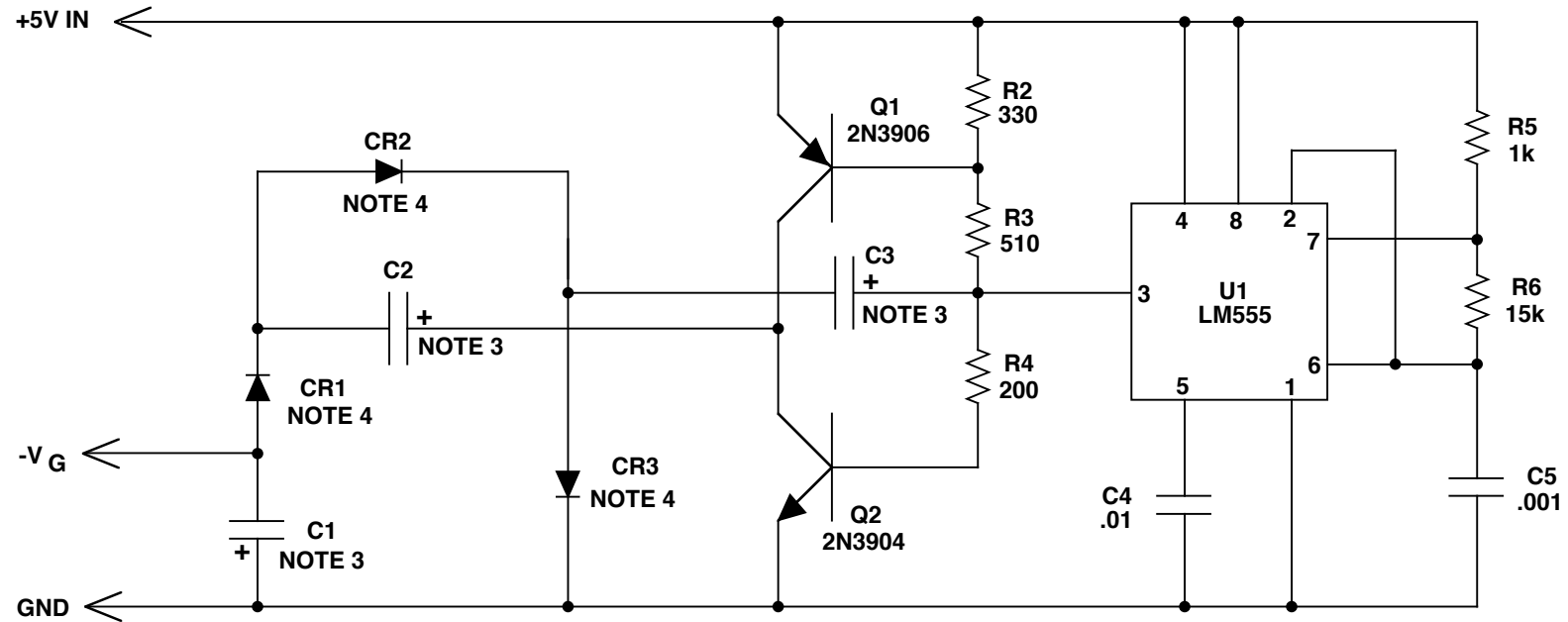


NEGATIVE GATE DRIVE VOLTAGE GENERATOR



NOTES:

1. ALL CAPACITORS ARE IN μF , ALL RESISTORS ARE IN OHMS (RESISTOR TOLERANCE 5%).
2. ALL CAPACITORS ARE CERAMIC, EXCEPT AS SPECIFIED IN NOTE 3.
3. VALUE OF C1, C2, AND C3 DEPENDS ON DESIRED LOAD CURRENT:
 FOR "LOW CURRENT" VERSION, USE 1 μF CERAMIC
 FOR "HIGH CURRENT" VERSION, USE 4.7 μF /25V ELECTROLYTIC
4. DIODE TYPE 1N4148