

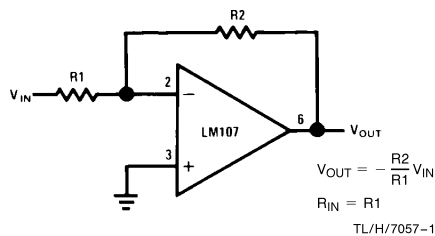
Op Amp Circuit Collection

National Semiconductor
Application Note 31
February 1978

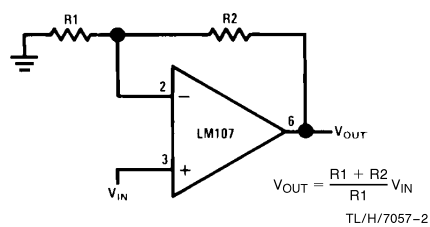


SECTION 1—BASIC CIRCUITS

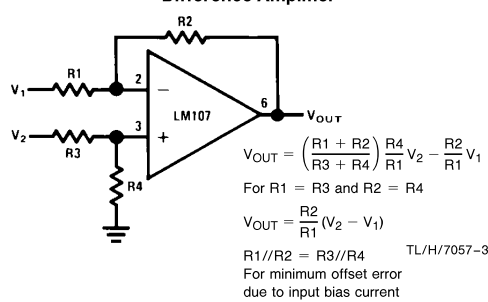
Inverting Amplifier



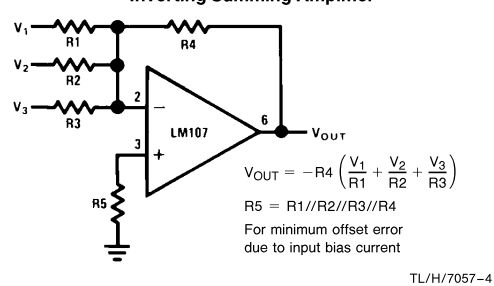
Non-Inverting Amplifier



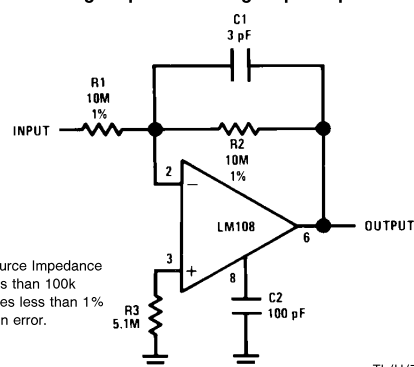
Difference Amplifier



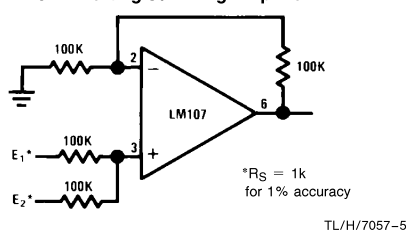
Inverting Summing Amplifier



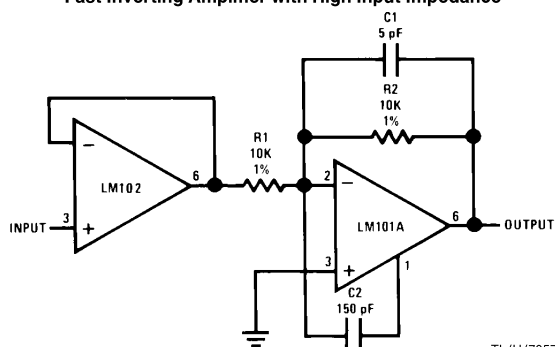
Inverting Amplifier with High Input Impedance



Non-Inverting Summing Amplifier



Fast Inverting Amplifier with High Input Impedance



Non-Inverting AC Amplifier

