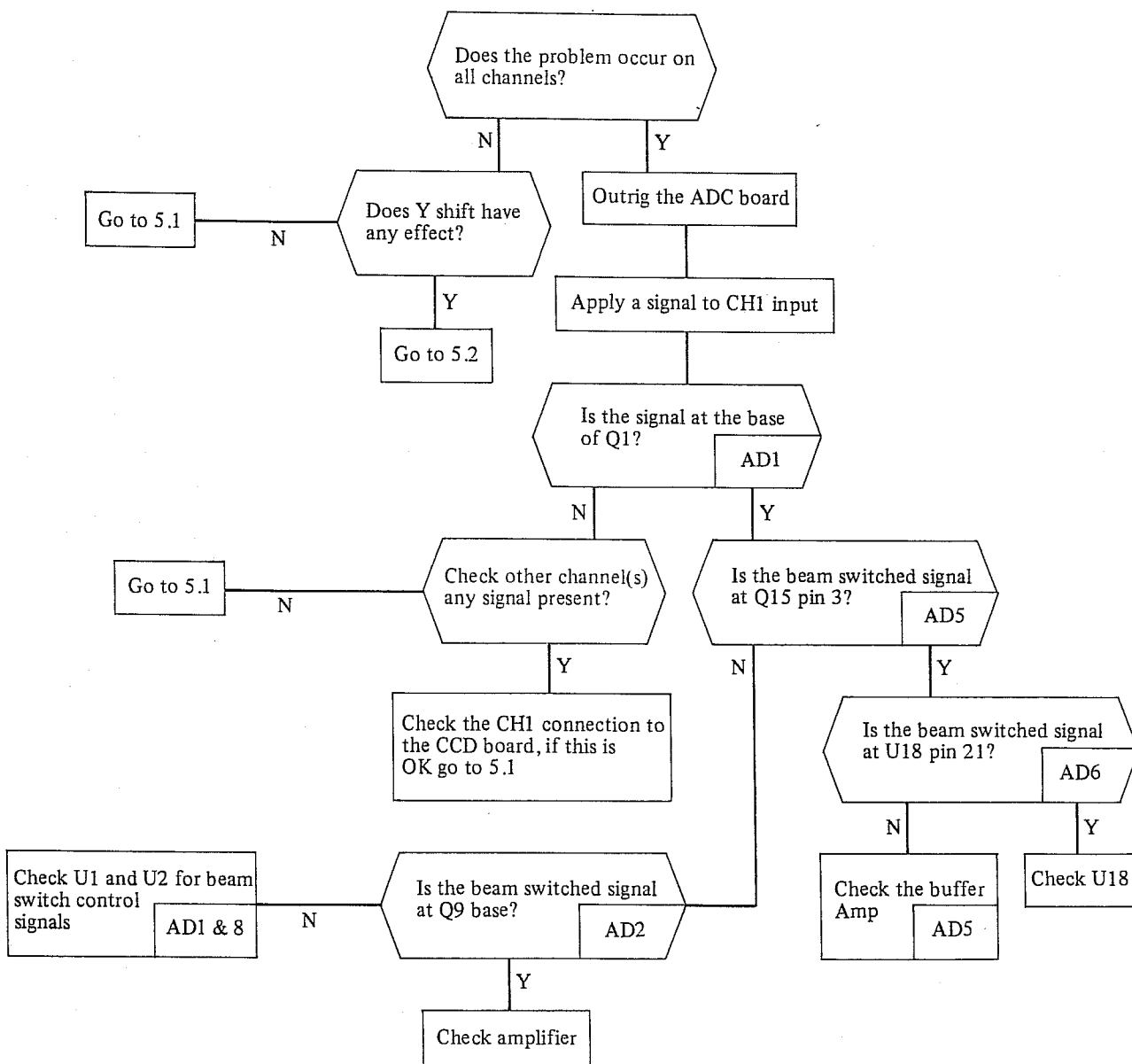


Servicing

Section 5

5 Trace Acquires but does not Display the Applied Signal

Symptoms: Acquisitions go to completion but the trace remains flat. Y shift may or may not affect the trace.



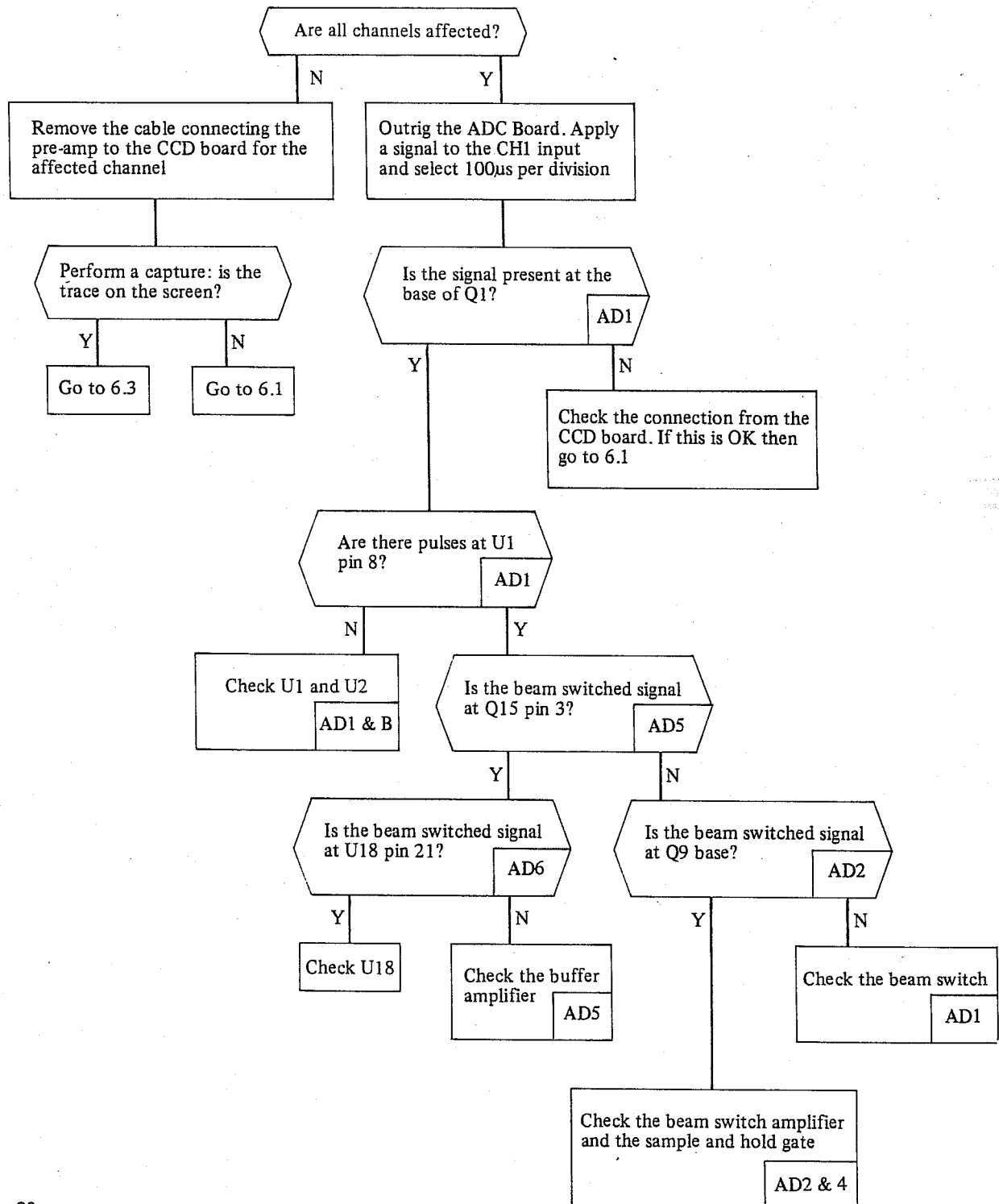
Servicing

Section 5

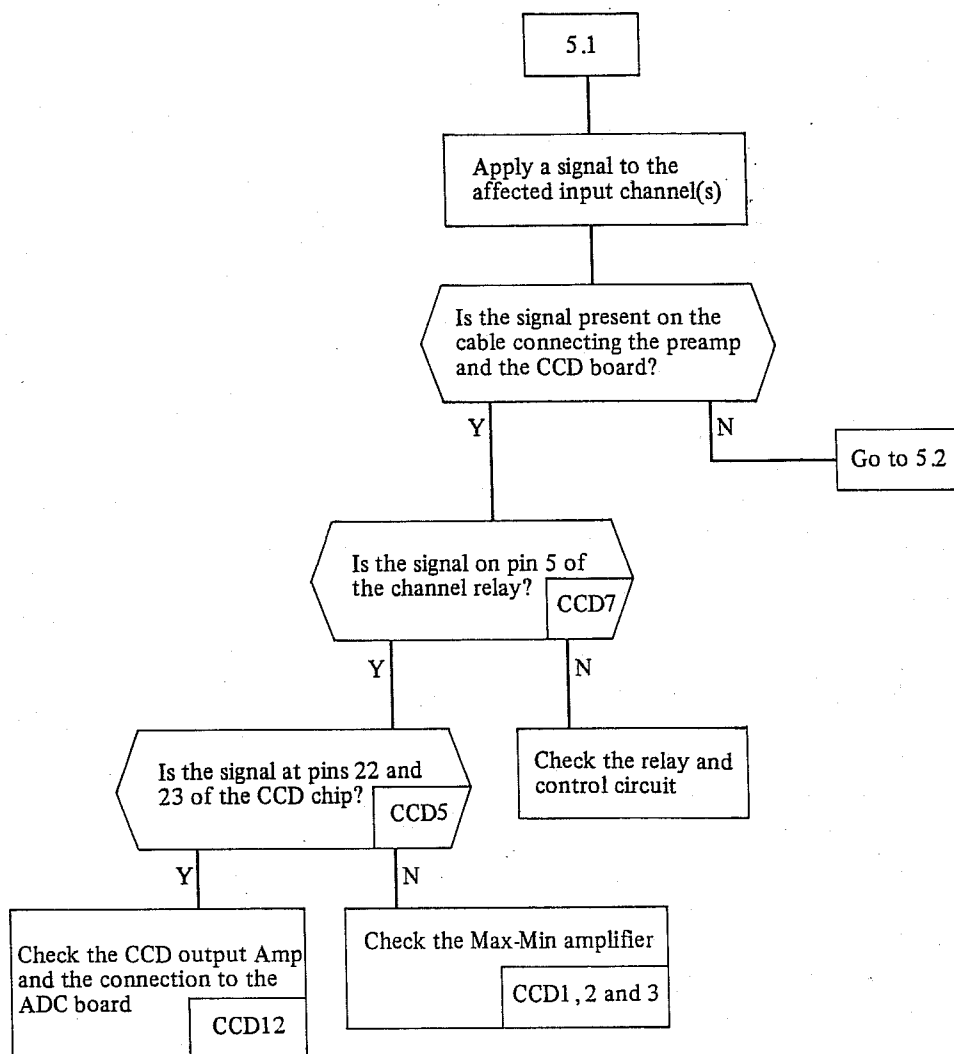
6 Trace off the Screen Top or Bottom

Symptoms: The captured trace is off the top or the bottom of the screen. It can only be viewed by adding post storage shift.

Note: See also fault number 7.



5.1 Trace Acquires but does not Capture the Applied Signal Continued



5.2 Trace Acquires but does not Capture the Applied Signal Continued

