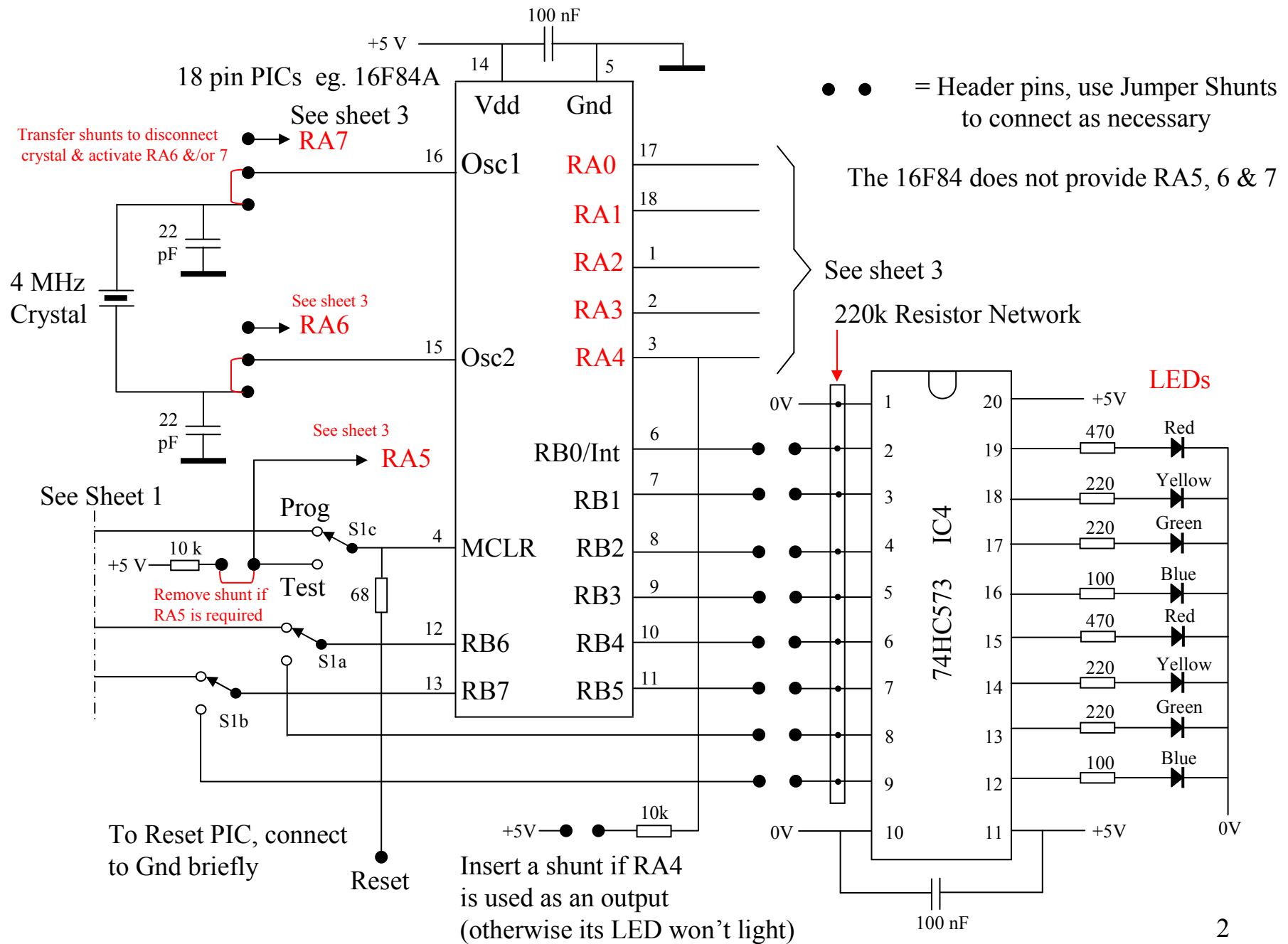
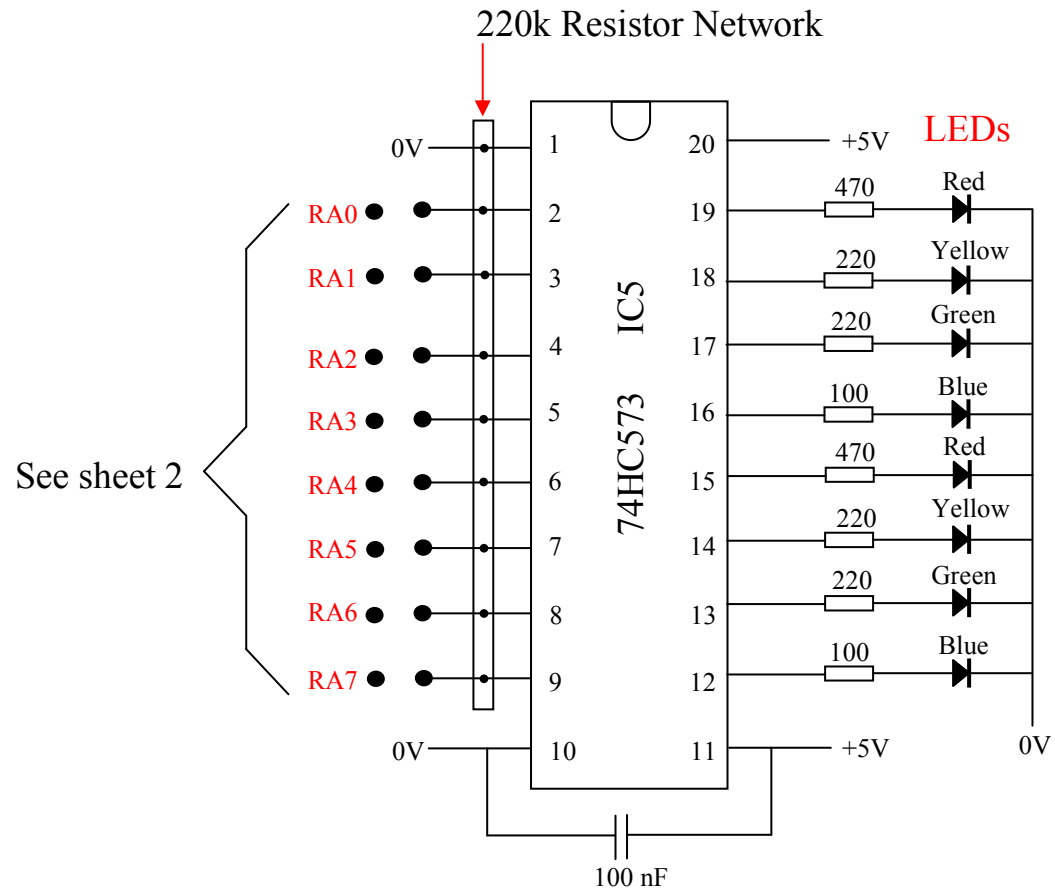
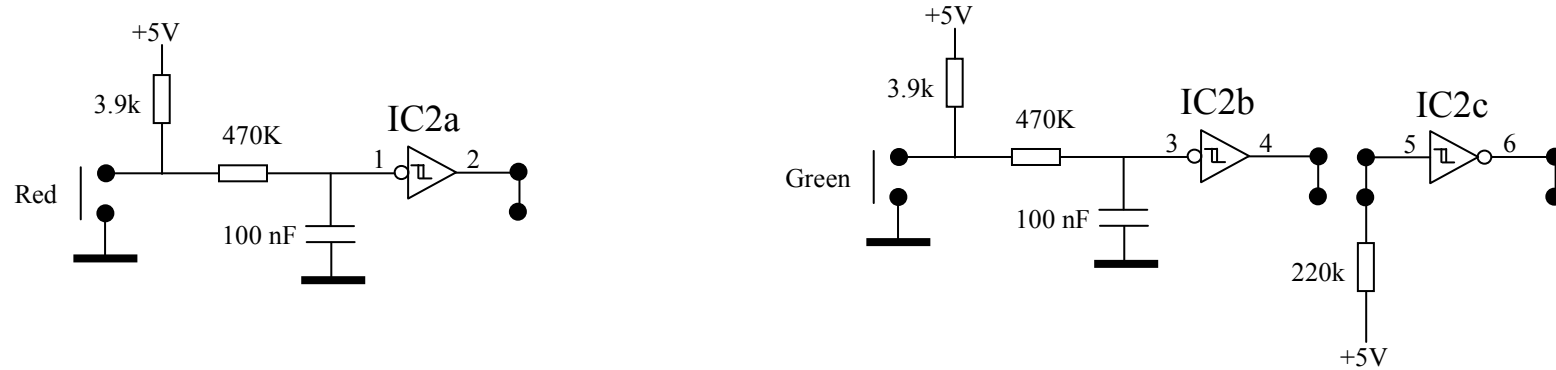


1



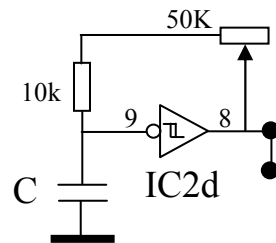


Buttons and Bounce Suppressors



IC2 CD40106

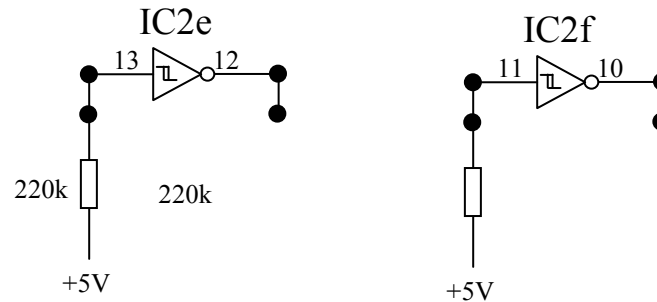
Oscillator



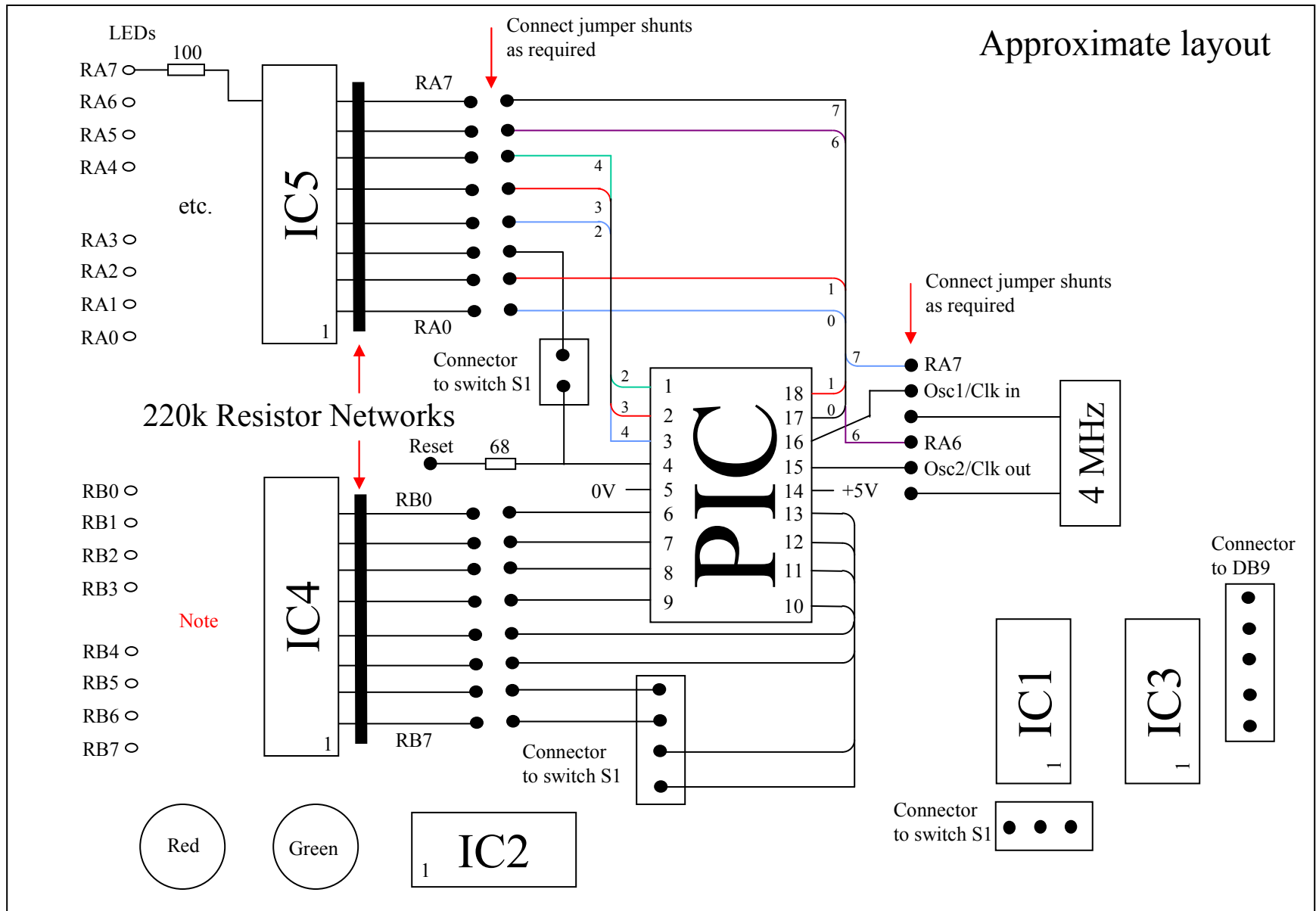
$$f = 1/(1.7 R C)$$

{very approximate}

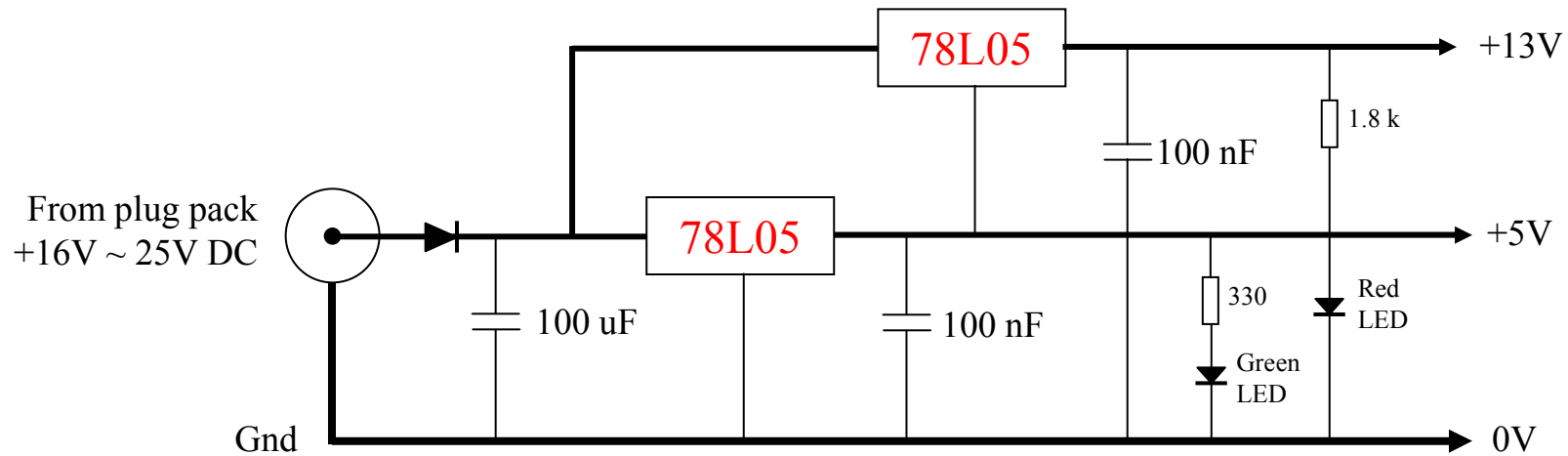
Inverters



Connect 100 nF ceramic bypass capacitors across the Vdd/Vss pins of all ICs.



Note: it is desirable to reverse the order of the RB LEDs to that shown so that the least significant bit is on the right when viewed from the RHS of the PCB (as the RAs are). This could be done by suitable resistor positioning.



Parts

Diode 1N4004

78L05 5V regulator

78L08 8V regulator

100 uF 35 Volt electrolytic

2x 100 nF 50 Volt ceramic

DC connector to suit plug on plug pack

(the centre conductor of the plug is assumed to be positive)

Power supply