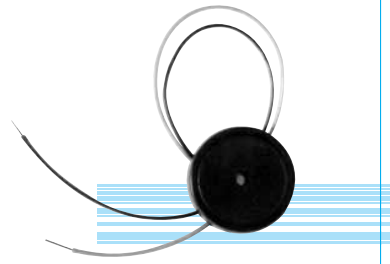
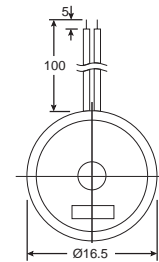


•E228 series
External Drive Piezo Transducer

DIMENSIONS



color Black
ABS Housing Material
Leadwire Terminal



Top View

Side View



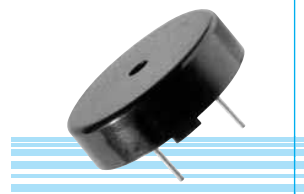
ELECTRICAL SPECIFICATIONS

Model No.	22PZ17400
Sound Pressure Level	80 dBA min. (9V p-p square wave, 10cm, 4000Hz)
Capacitance	9500 pF \pm 30% at 120Hz
Max. Input Voltage	25V p-p
Operating Temperature	-20 ~ +60°C
Weight	1 g

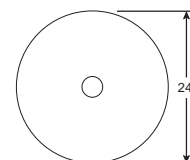
all dimensions are in mm

•E338 series
External Drive Piezo Transducer

DIMENSIONS

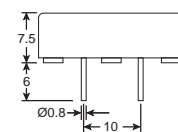


color Black
ABS Housing Material
Pin Terminal



Top View

Side View



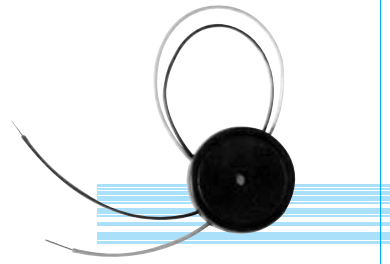
ELECTRICAL SPECIFICATIONS

Model No.	33PZ24400
Sound Pressure Level	85 dBA min. (9V p-p square wave, 10cm, 4000Hz)
Capacitance	17000 pF \pm 30% at 120Hz
Max. Input Voltage	60V p-p
Operating Temperature	-20 ~ +60°C
Weight	3 g

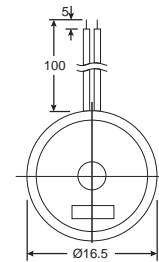
all dimensions are in mm

•E228 series
External Drive Piezo Transducer

DIMENSIONS

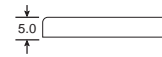


color Black
ABS Housing Material
Leadwire Terminal



Top View

Side View



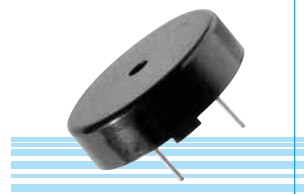
ELECTRICAL SPECIFICATIONS

Model No.	22PZ17400
Sound Pressure Level	80 dBA min. (9V p-p square wave, 10cm, 4000Hz)
Capacitance	9500 pF \pm 30% at 120Hz
Max. Input Voltage	25V p-p
Operating Temperature	-20 ~ +60°C
Weight	1 g

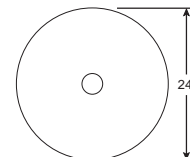
all dimensions are in mm

•E338 series
External Drive Piezo Transducer

DIMENSIONS

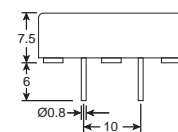


color Black
ABS Housing Material
Pin Terminal



Top View

Side View



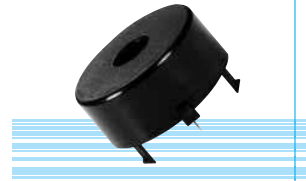
ELECTRICAL SPECIFICATIONS

Model No.	33PZ24400
Sound Pressure Level	85 dBA min. (9V p-p square wave, 10cm, 4000Hz)
Capacitance	17000 pF \pm 30% at 120Hz
Max. Input Voltage	60V p-p
Operating Temperature	-20 ~ +60°C
Weight	3 g

all dimensions are in mm

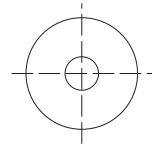
•E168 series Self Drive Piezo Transducer

DIMENSIONS

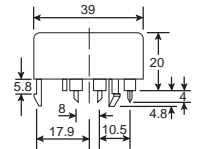


color Black
Noryl SEI Housing Material
Pin Terminal

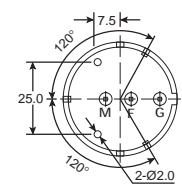
Top View



Side View



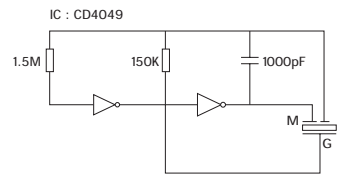
Bottom View



all dimensions are in mm

ELECTRICAL SPECIFICATIONS

Model No.	16PZ3200
Operating Voltage (VDC)	4.5 ~ 15
Rated Voltage (VDC)	9
Max. Rated Current (mA.)	15
Min Sound Output (dBA/30cm)	95
Frequency (Hz.)	3400±500
Operating Temperature (°C)	-20 ~ +70
Weight (gm.)	11



Reference Circuit

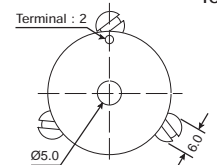
•E358 series Self Drive Piezo Transducer

DIMENSIONS

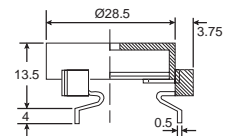


color Grey
PBT Housing Material
Pin Terminal

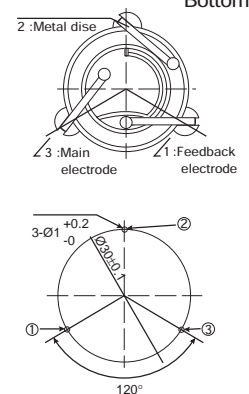
Top View



Side View



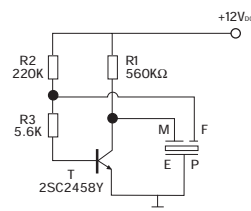
Bottom View



all dimensions are in mm

ELECTRICAL SPECIFICATIONS

Model No.	35PZ28300
Operating Voltage (VDC)	3 ~ 24
Rated Voltage (VDC)	12
Min Sound Output (dBA/100cm)	75
Frequency (Hz.)	3000±500
Operating Temperature (°C)	-20 ~ +70
Weight (gm.)	3



Reference Circuit