

# PHILIPS

## PVD1075: 10,2" LCD TV

Theo Heijnen  
Euroservice, Support&Training  
Training PVD1075  
December, 2007

# Program PVD1075 training

Introduction set  
Block Diagram  
Mechanical instructions  
Service SW Upgrade.



# Introduction.

PVD series are the additional features in the DVD portable products with Digital and Analogue TV functions. With the growing popularity & adoption of mobile TV experience, the market is ready to accept dedicated personal & portable TV devices at affordable prices.

**PVD1075 – 10.2” portable TV with Digital tuner (DVBT) \*)**

PVD1078 – 10.2” portable Analog TV tuner \*)

PVD1079 – 10.2” portable TV with Digital/Analog tuner (DVBT) \*)

PVD775 – 7” portable TV with Digital tuner (DVBT) \*)

PVD875 – 8.5” portable TV with Digital tuner (DVBT) \*)

PVD375 – 3.5” portable TV with Digital tuner (DVBT) \*)

**\*) Introduction not in all countries.**

# Key Specifications.

Type Number	PVD1075 – Digital TV
Stroke version	/12
Sound	
Speakers	2x1W
Volume control type	Digital up/down (on main unit & remote control)
Dynamic Bass boost	n/a
Display	
Size	10.2" LCD
Resolution	800x600x3 (RGB)
Brightness	Typical 200 cd/m2
Contrast ratio (typical)	200:1
Response time (typical)	30 ms

Type Number	<b>PVD1075 – Digital TV</b>
Stroke version	<b>/12</b>
TV tuner	
Tuner	<b>DVB-T</b>
Antenna Model	Active & Passive, Support auto-scan & manual-scan
Input Frequency Band	Full 48~862 MHz Frequency Range for VHF and UHF
Output signal	PAL/NTSC
Video Decoding	<b>MPEG II</b> Chipset decoder
Picture Aspect Ratio	4:3 and 16:9

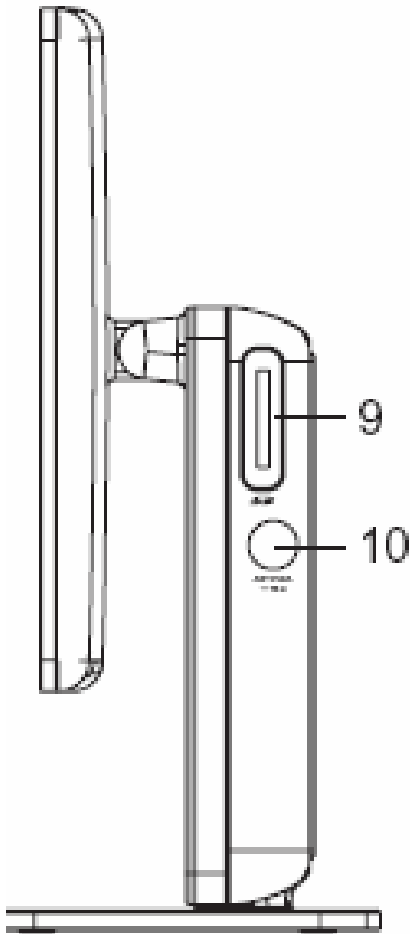
Audio Decoding	MPEG Layer 1 and Layer 2
Channel Bandwidth	6,7,8 MHz
Modulation	QPSK,16QAM or 64 QAM Constellations
Carrier Type	2K/8K FFT for SFN
EPG & Teletext	YES/YES
Guard Interval	1/4,1/8,1/16,1/32
Code Rate	1/2,2/3,3/4,5/6,7/8
Suitable country	Europe + Australia

<b>Type Number</b>	<b>PVD1075 – Digital TV</b>
<b>Stroke version</b>	<b>/12</b>
<b>SD card slot</b>	Yes, support SD standard
File playback	Audio: MP3/WMA Picture: JPEG Video: DivX
<b>USB</b>	<i>The TV does not support Hard Disk storage or Media Transfer Protocol (MTP) format.</i>
<b>Connections</b>	
AV in	Yes
AV out	n/a
S-video	n/a
DC-in	Yes
Headphone	1 headphones out, 3.5mm (Cut the speaker output when headphone detected)

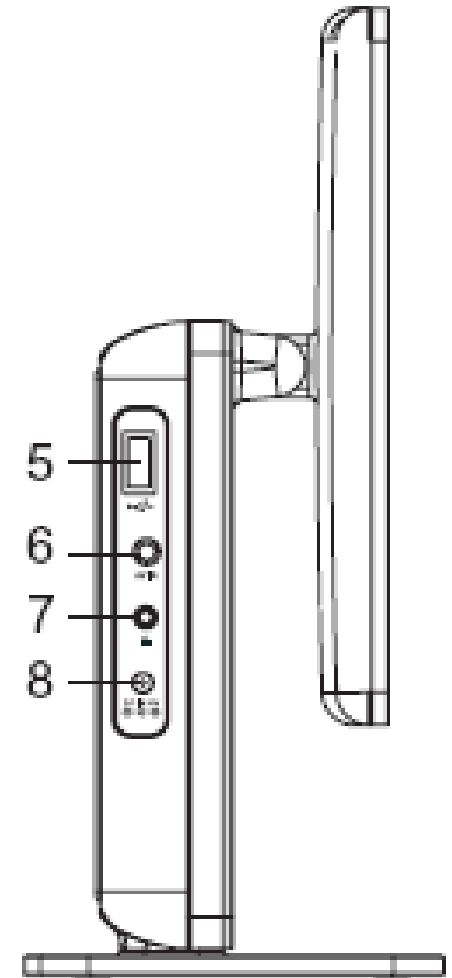
<b>Type Number</b>	<b>PVD1075 – Digital TV</b>
<b>Stroke version</b>	<b>/12</b>
<b>General</b>	
Source select	TV, Card and AV-in
LED indication	Power: Green Charging: Red IR: Green; flashing when response to remote signal
Battery	500 time charging / discharging cycle with not less than 80% 4 hrs fully charged

Battery life	Support 3 hrs playback (measure by power saving and 1/3 max volume) Charging during playback
Power supply	Mains & battery

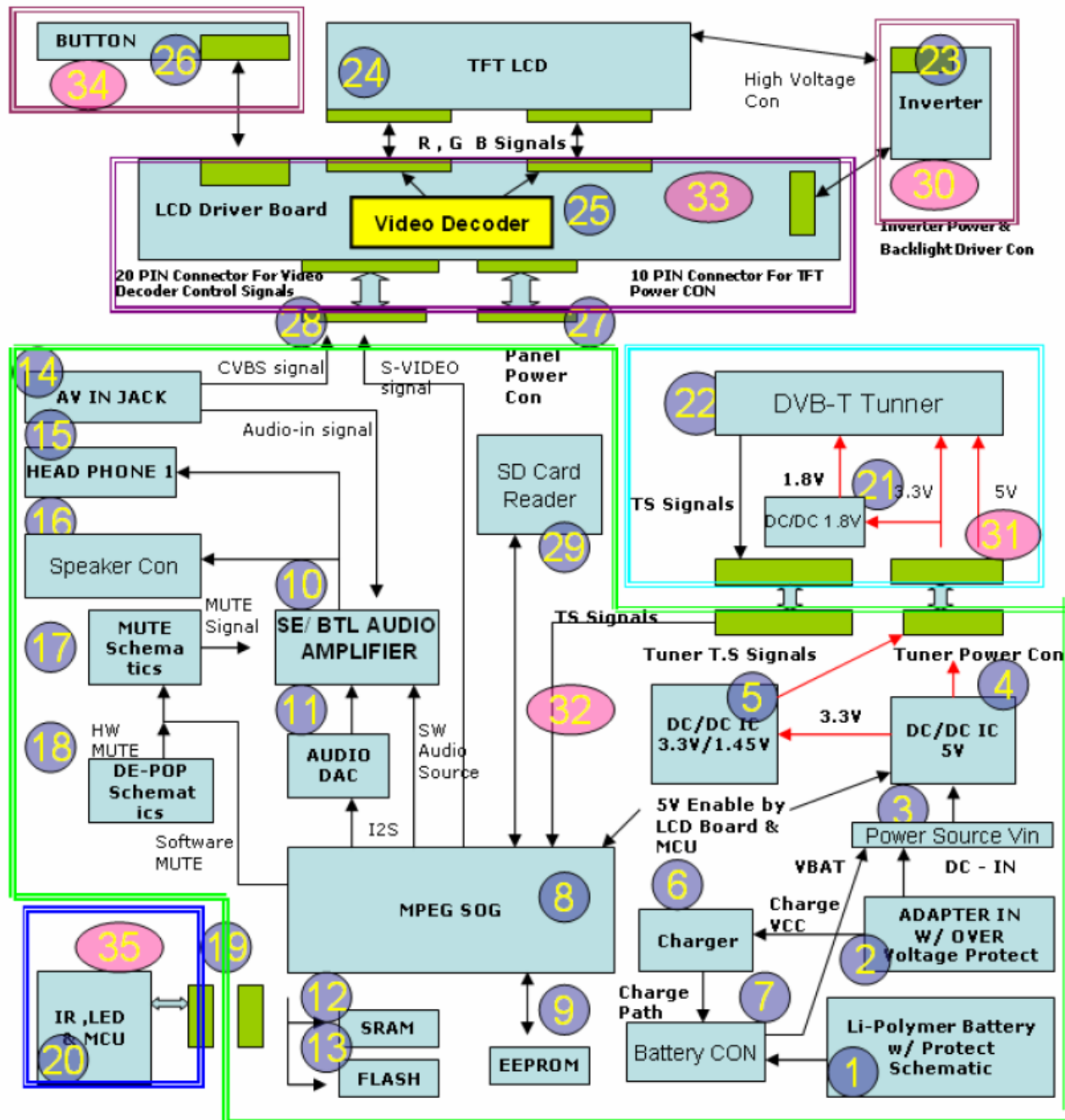
# Connections



- |     |                |
|-----|----------------|
| 9.  | SD Card Slot   |
| 10. | Antenna input  |
| 5.  | USB connection |
| 6.  | AV in          |
| 7.  | Headphone Jack |
| 8.  | DC in          |











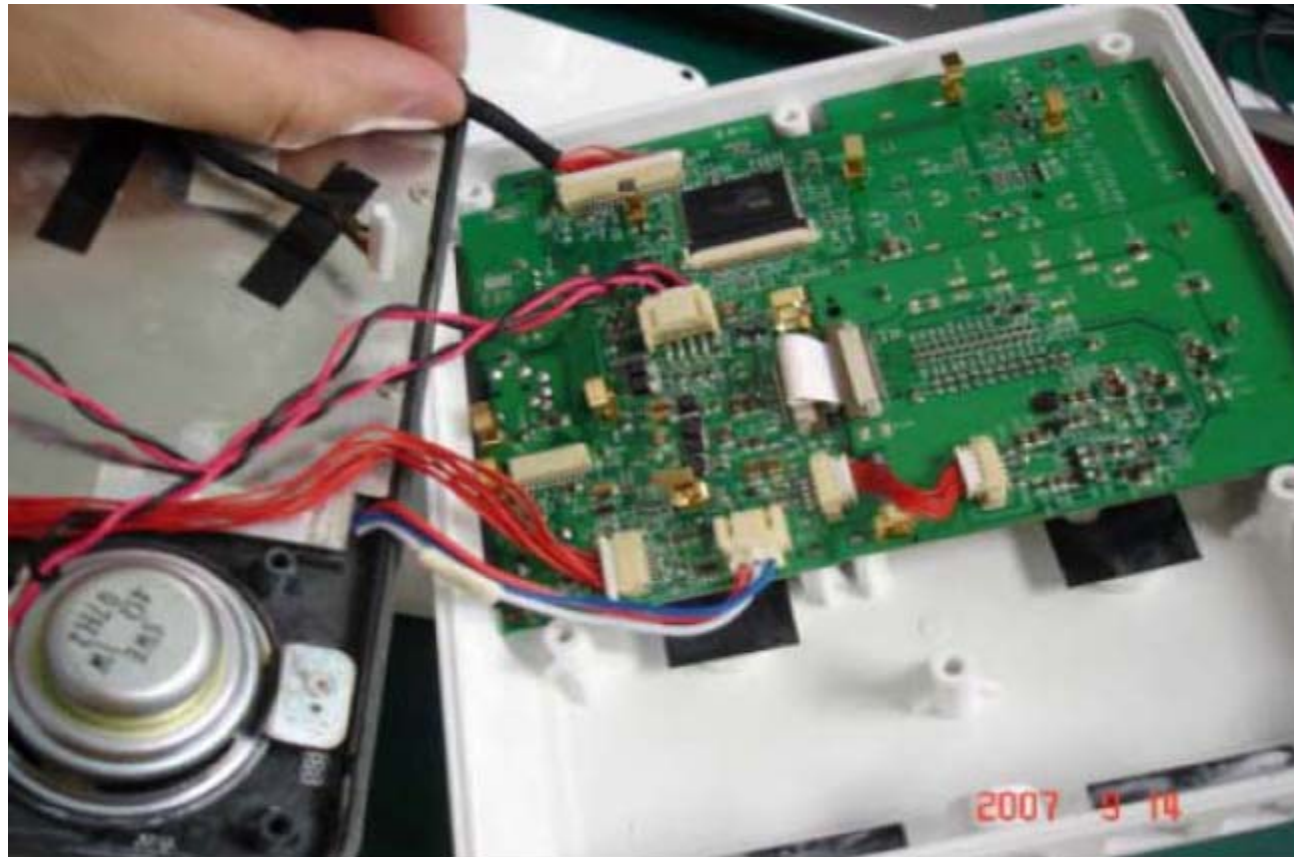


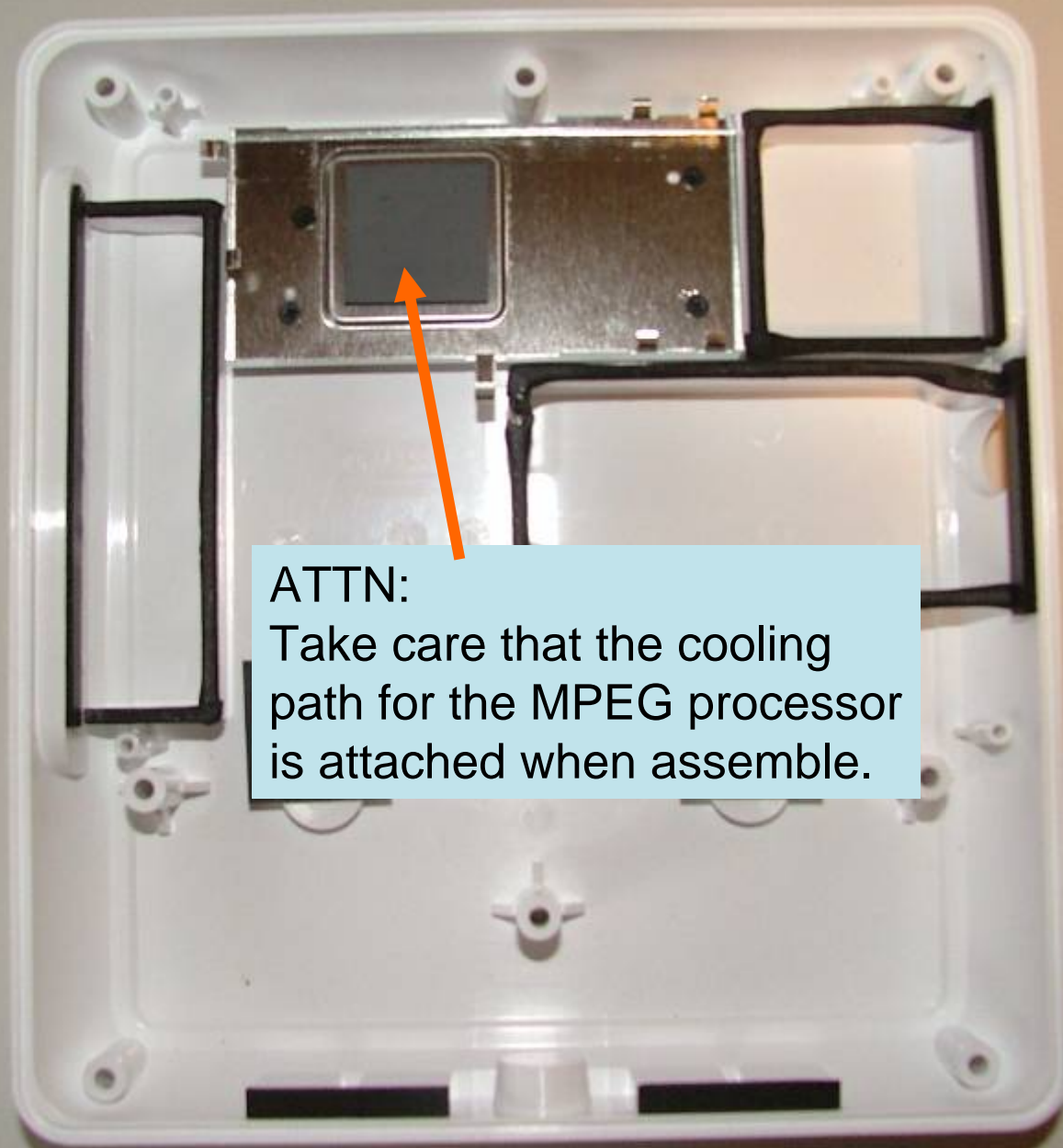
# Mechanical instructions.





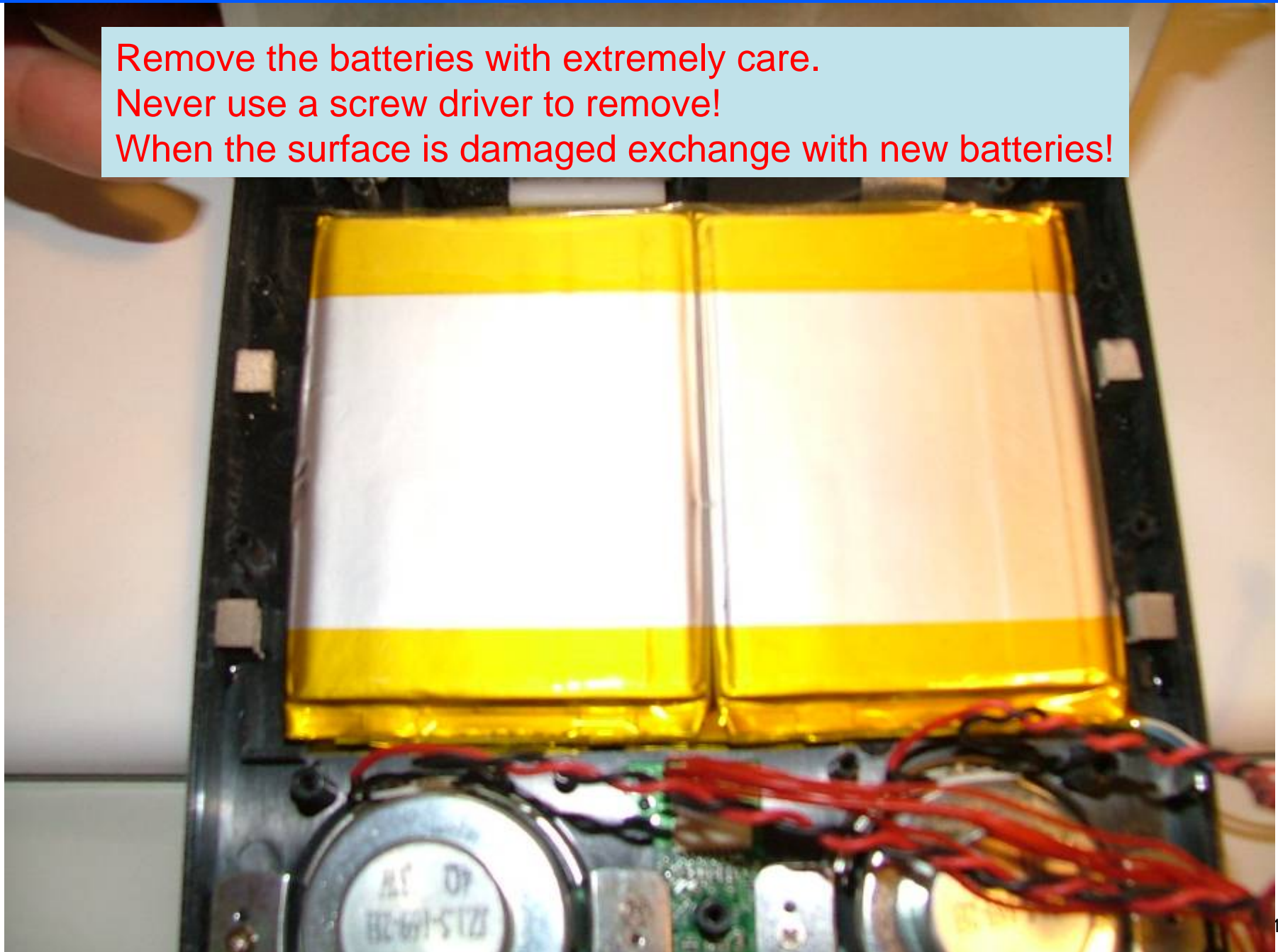






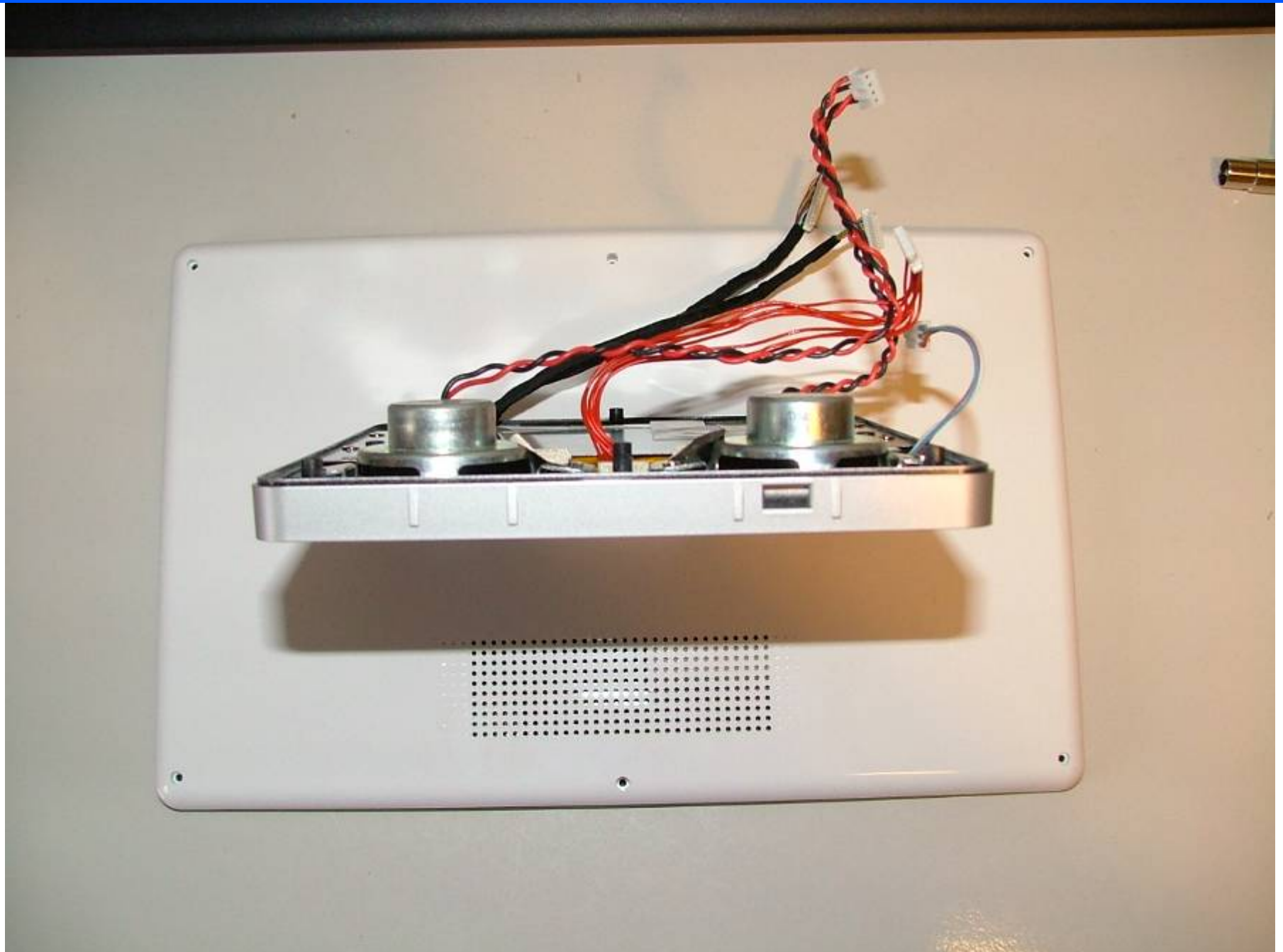
ATTN:  
Take care that the cooling  
path for the MPEG processor  
is attached when assemble.

Remove the batteries with extremely care.  
Never use a screw driver to remove!  
When the surface is damaged exchange with new batteries!



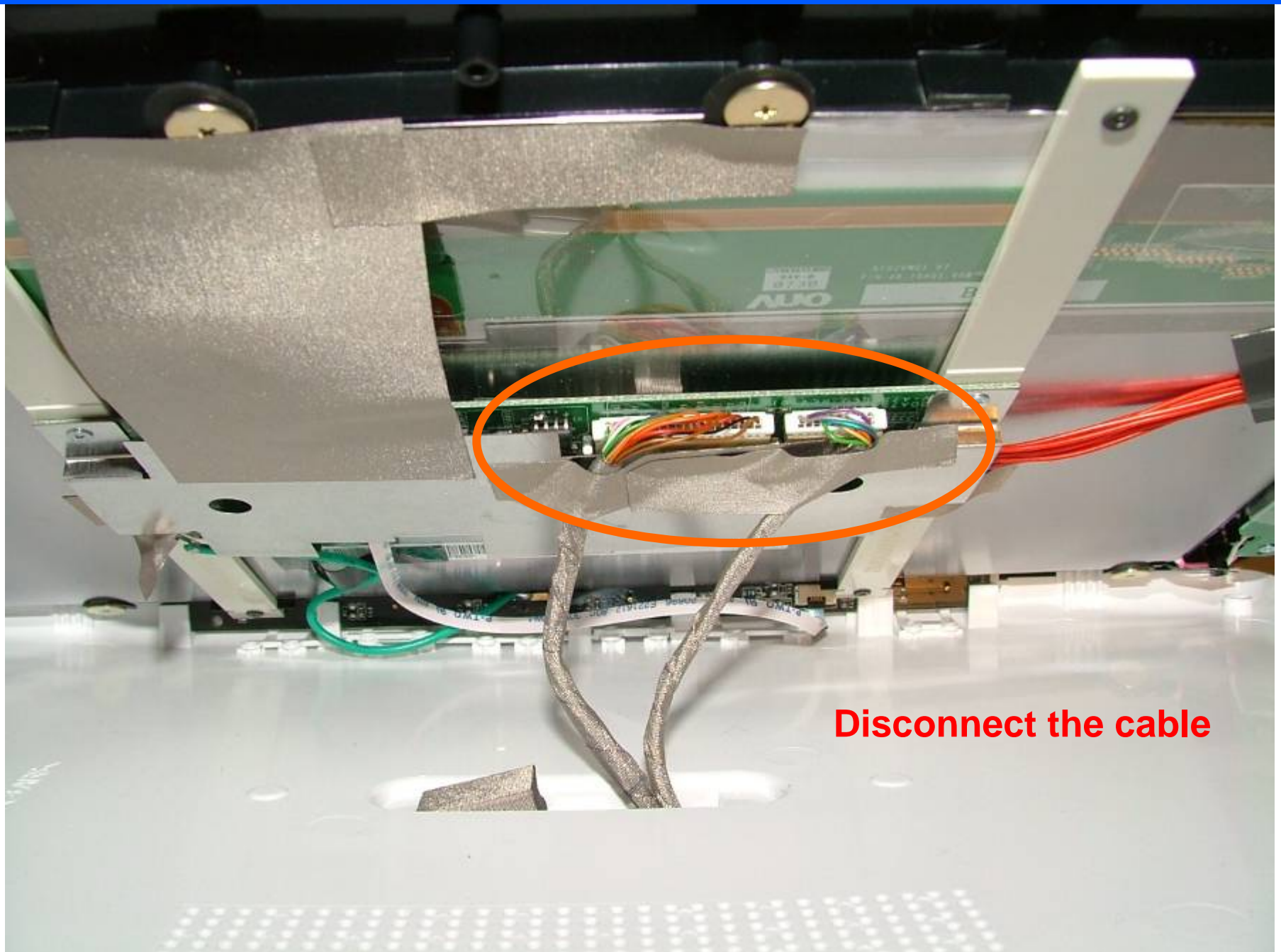


**PHILIPS**





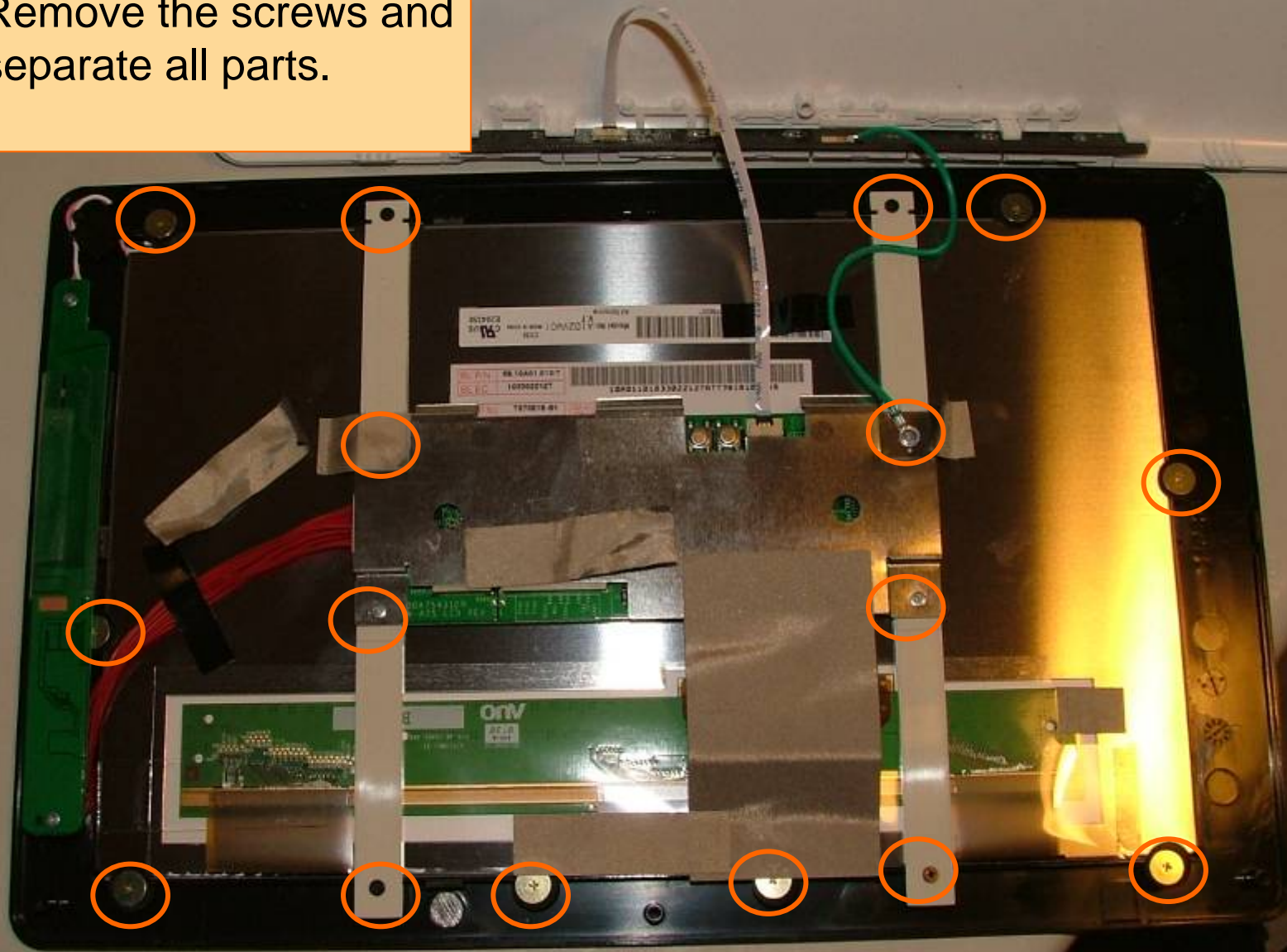
**PHILIPS**



**Disconnect the cable**



Remove the screws and separate all parts.



## SW Upgrade.

### **Procedure on how to upgrade the software of the Portable TV**

*Check **[www.philips.com/support](http://www.philips.com/support)** for latest software upgrades available.*

#### **A) MPEG firmware upgrade**

1. Unzip the wtva750.ROM
2. Drag-n-drop to USB drive
3. Power on the main set with AC/DC adaptor
4. Insert USB drive to the USB port of the main set
5. The set will detect the updated firmware
6. Press “OK” button on remote control to confirm and proceed
7. After upgrade completed, the set will power off, and you can remove the USD drive

***Warning: Do not unplug the AC adaptor during firmware upgrade to prevent flash corrupt of the set!!***

# SW Upgrade

## ***B) PANEL firmware upgrade***

8. Unzip the wtva750.ROM (different file from step 1)
9. Drag-n-drop to USB drive
10. Power on the main set with AC/DC adaptor
11. Insert USB drive to the USB port of the main set
12. The set will detect the updated firmware
13. Press “OK” button on remote control to confirm and proceed
14. After upgrade completed, the set will power off, and you can remove the USD drive

***Warning: Do not unplug the AC adaptor during firmware upgrade to prevent flash corrupt of the set!!***