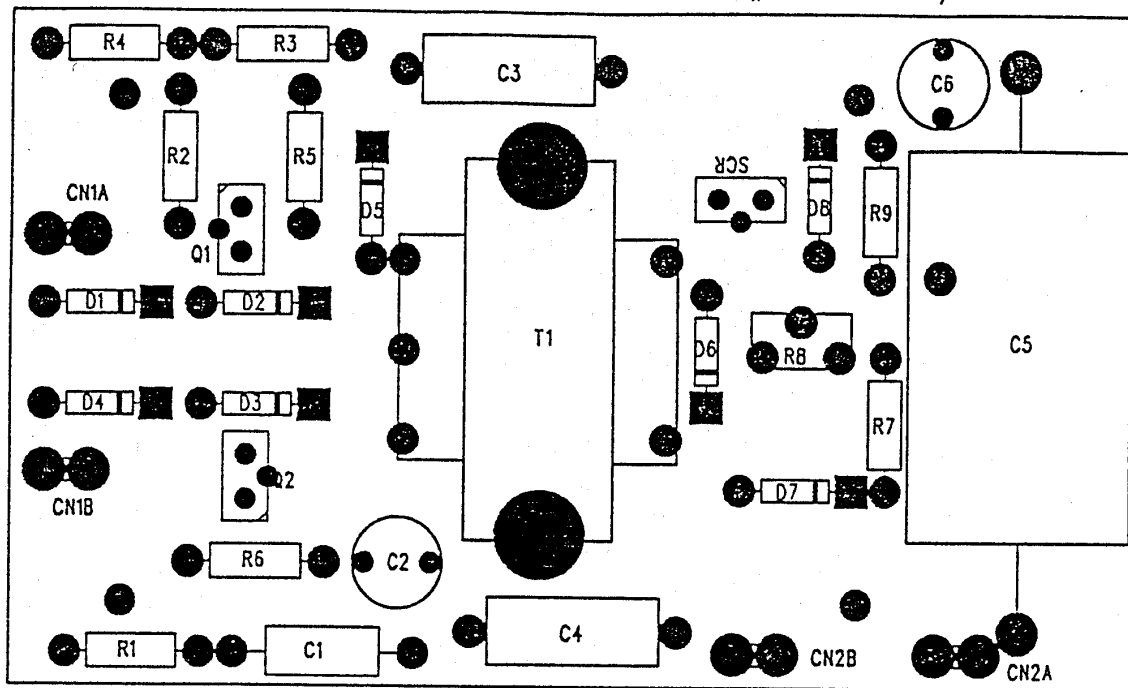
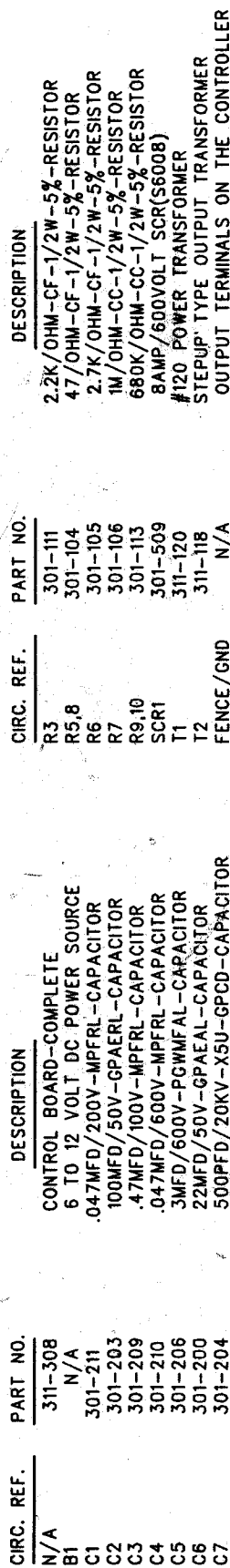


..



<u>CIRC. REF.</u>	<u>PART NO.</u>	<u>DESCRIPTION</u>
N/A	301-218	BLANK PCB
C1	301-211	.047MFD/200V-MPFRL-CAP.
C2	301-203	100MFD/50V-GPAERL-CAP.
C3	301-209	.47MFD/100V-MPFRL-CAP.
C4	301-210	.047MFD/600V-MPFRL-CAP.
C5	301-206	3MFD/600V-PGWMFAL-CAP.
C6	301-200	22MFD/50V-GPAEAL-CAP.
CN(ETC)	301-713	.187 QUICK DISC. TAB
D1 THRU D7	301-220	1A/1000V DIODE (1N4007)
D8	301-214	BILATERAL DIAC (HT-40)
Q1	301-222	PNP POWER TRANS.(D45H11)
Q2	301-231	PNP GP TRANS.(TIP30)
R1	301-117	10/OHM-CC-1/2W-5% RES.
R2,4	301-107	470/OHM-CC-1/2W-5% RES.
R3	301-111	2.2K/OHM-CC-1/2W-5% RES.
R5,9	301-104	47/OHM-CC-1/2W-5% RES.
R6	301-105	2.7K/OHM-CC-1/2W-5% RES.
R7	301-115	680K/OHM-CF-1/2W-5% RES.
R8	301-137	1M/OHM-CC-1/2W-5% POT.
SCR1	301-509	8A/600V SCR (S6008)
T1	311-120	#120 POWER TRANSFORMER
TP1	301-618	1.1/2"L(X)1/2"W DSF TAPE

MODEL(S) SS-2000/DS-2000



ELECTRICAL SPECIFICATIONS
INPUT: 12.0V/.09A/1.0W/DC
OUTPUT: INTERMITTENT
OCV: 9000-11000
SCA: 3-5

REVISÉ: