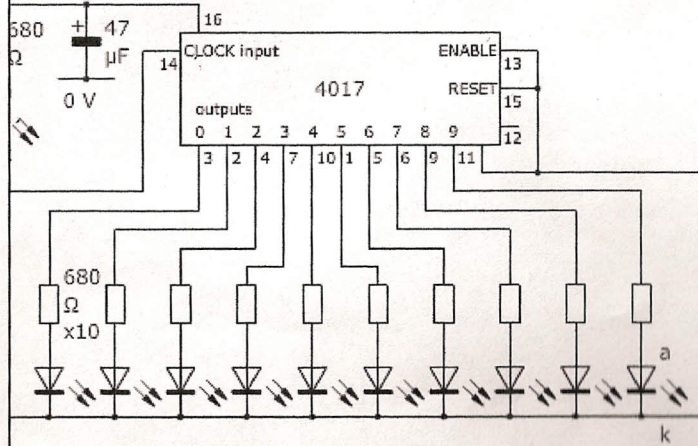
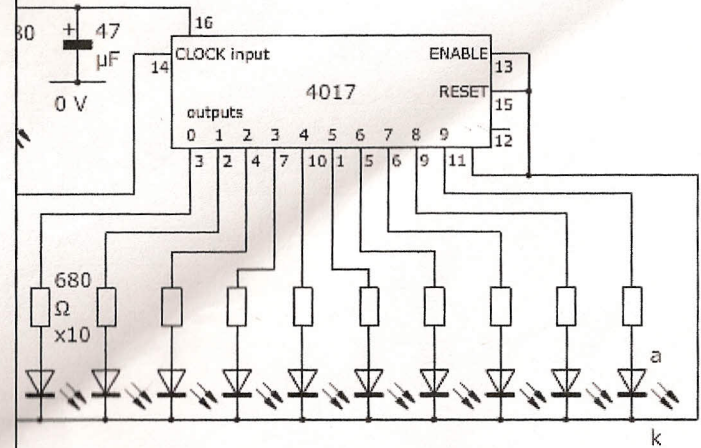


CONNECT
ASTABLE 555
CIRCUIT TO PIN 14
OF 4017

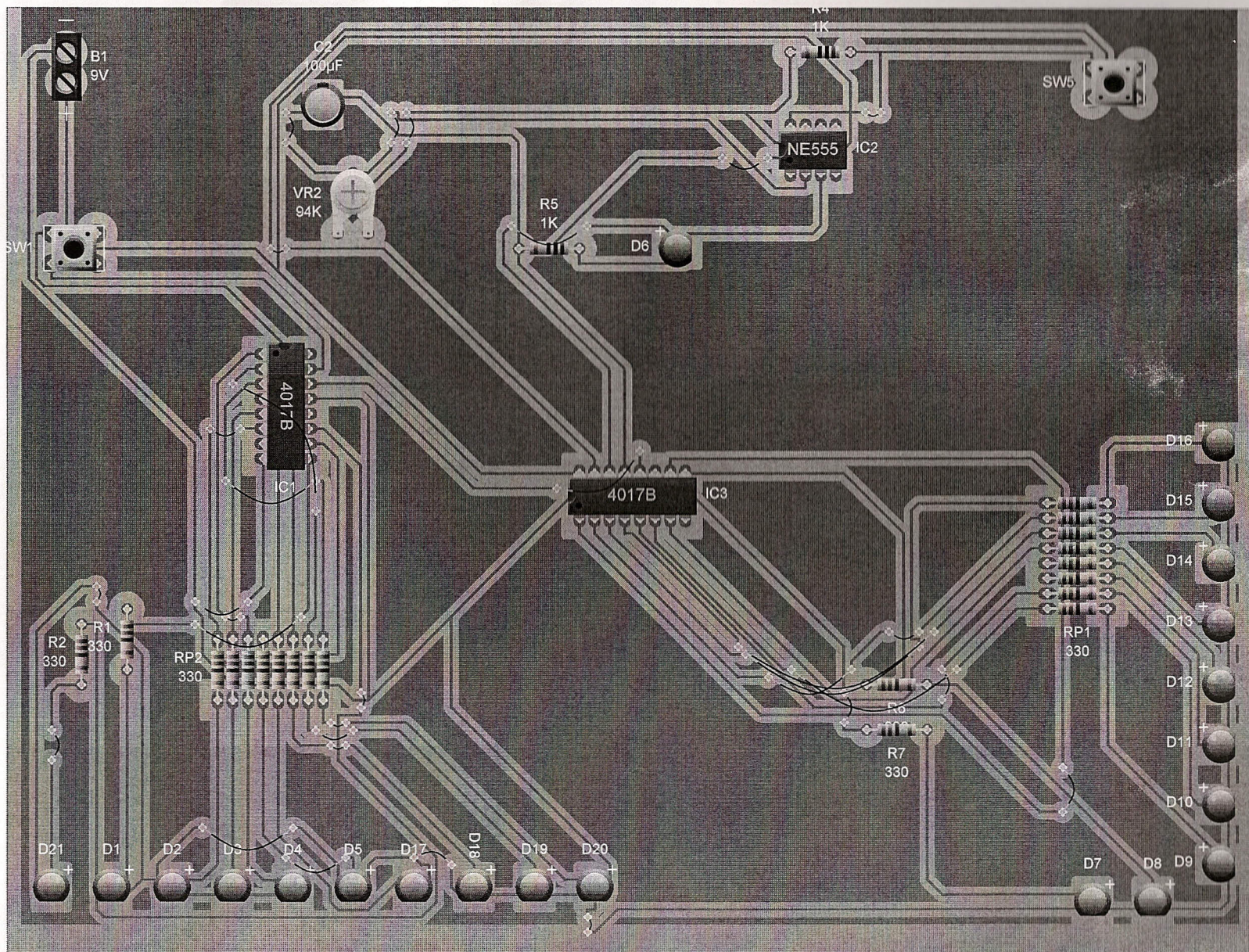


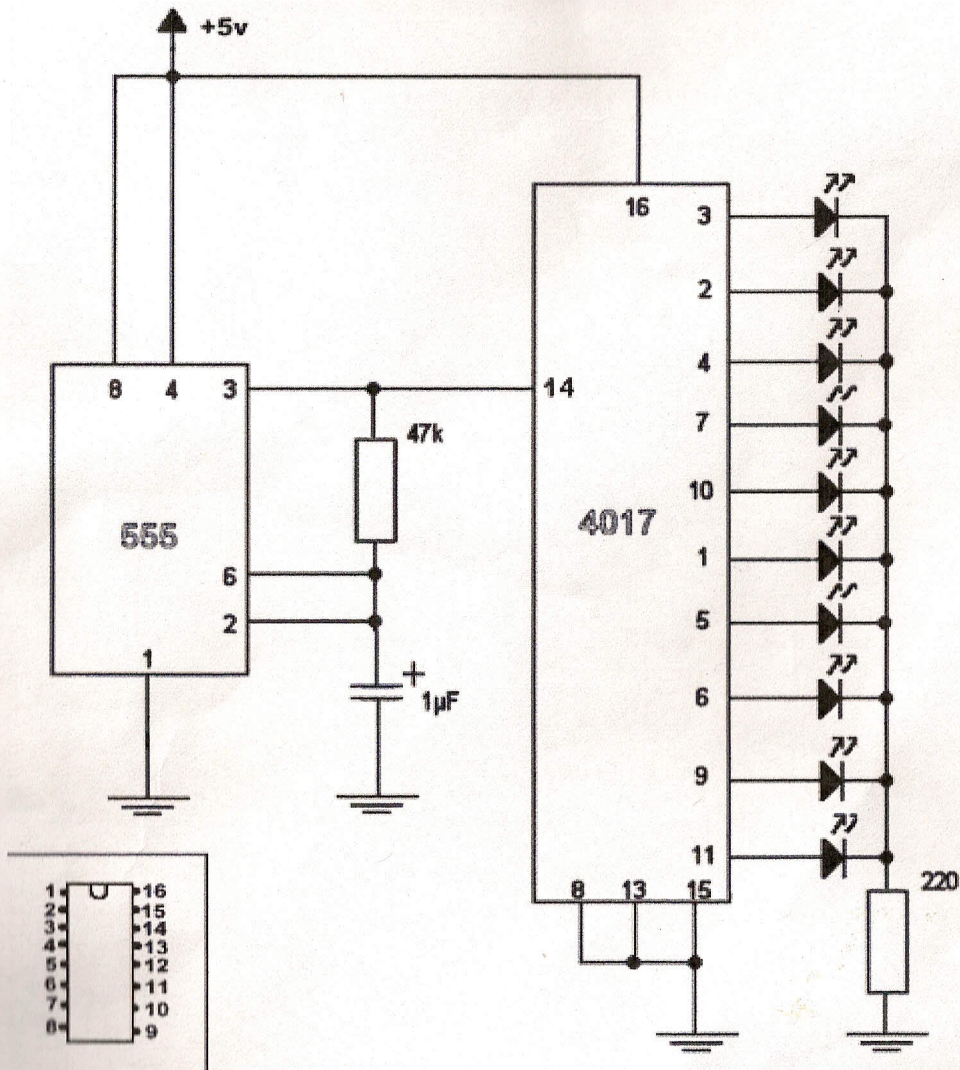
CONNECT
FIRST 4017
PIN 12 TO PIN
14 OF
SECOND 4017

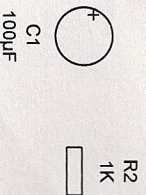
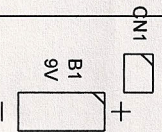
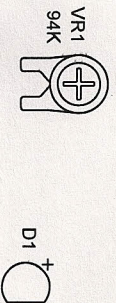


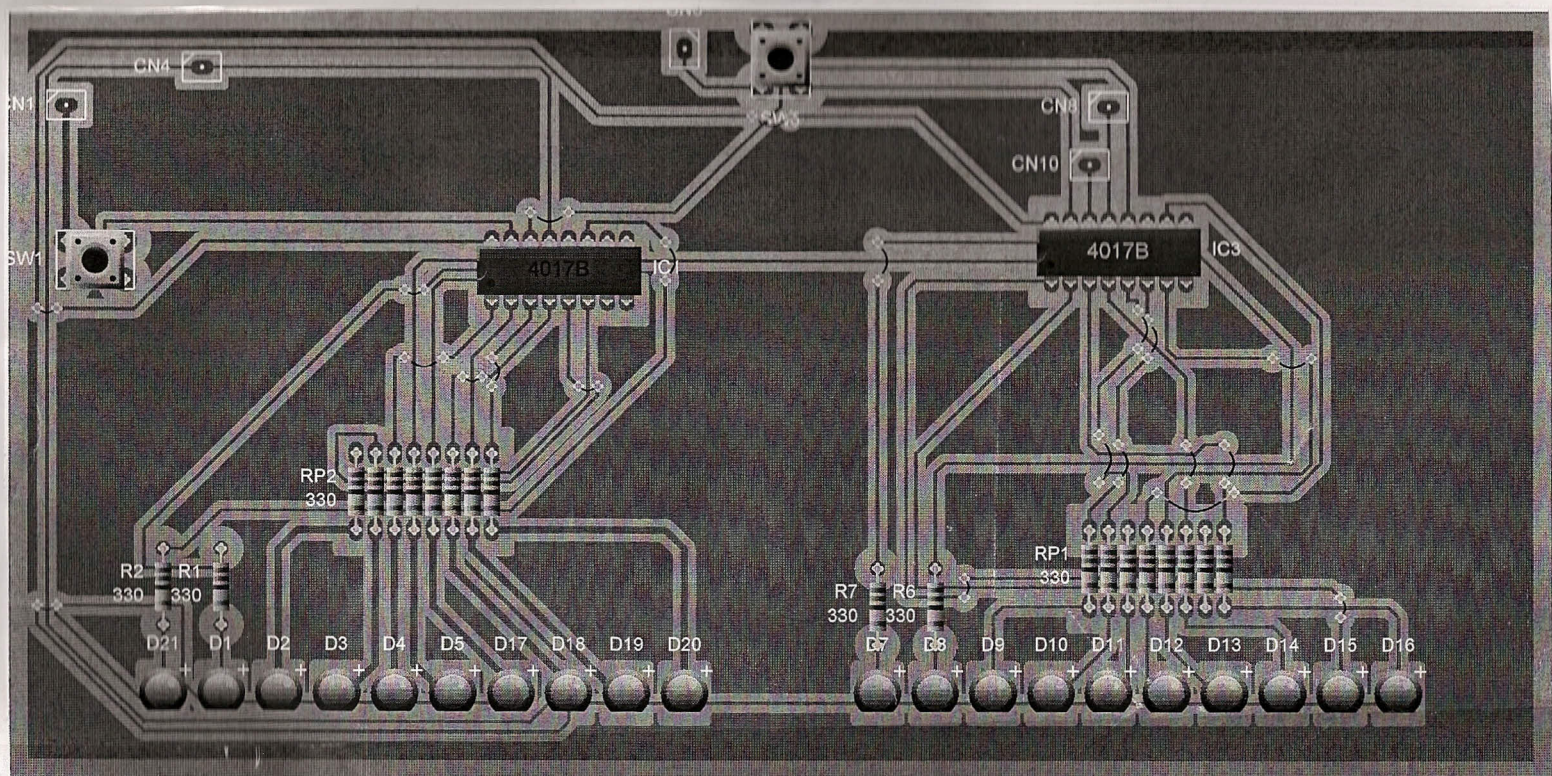
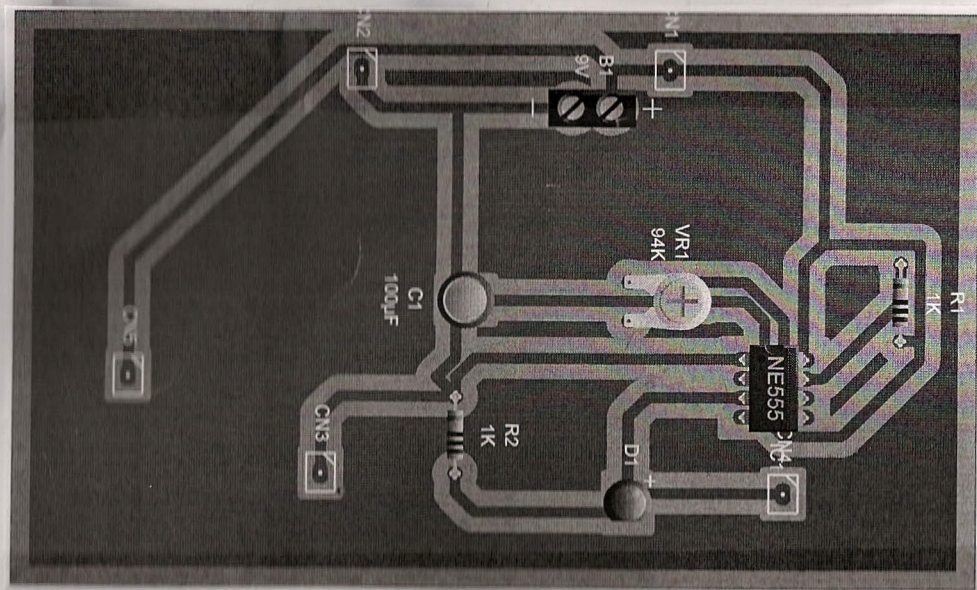
1. Establish Supply RAIL VOLTAGE
2. LED resistor needs to be correct
for LED colour

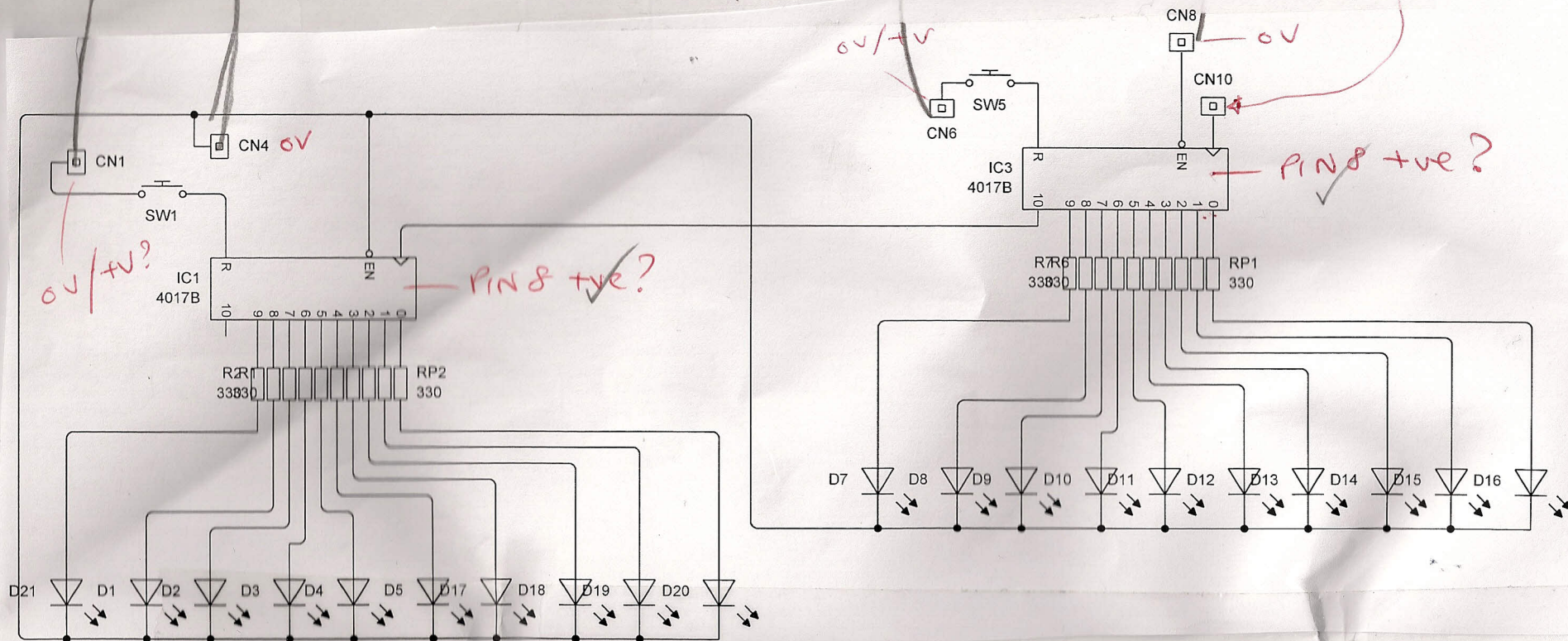
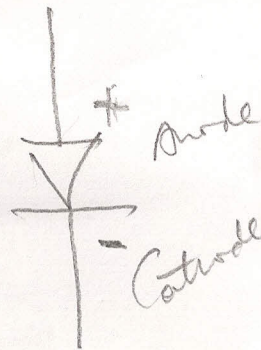
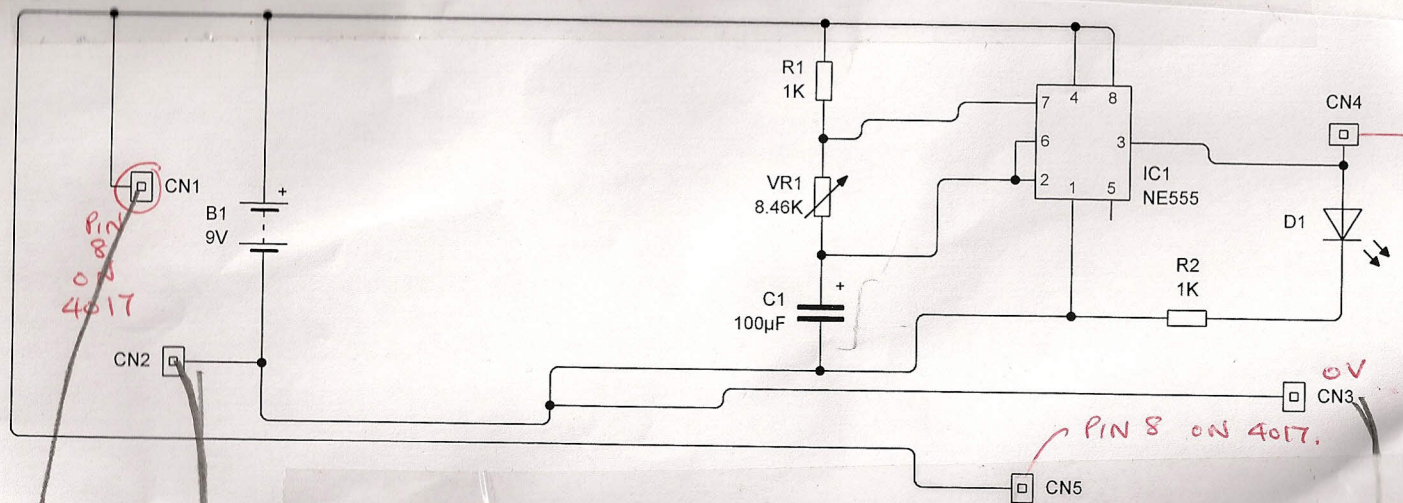
330. Resistor











Name	Cost	Quantity	Total
✓ 100 μ F Electrolytic Capacitor	0	1	0
✓ 1K Resistor (1/4W)	0	2	0
✓ 2 pin Terminal Block	0	1	0
✓ 330 Resistor (1/4W)	0	20	0
✓ 4017B Decoded Decade (Divide-by-10) Counter	0	2	0
✓ 94K Variable Resistor	0	1	0
✓ NE555 Bipolar Timer	0	1	0
✓ Red LED (0.2 in, 5 mm)	0	21	0
SPST Switch	0	2	0
Total			0

Resistor J6T on the board