

# LM1458,LM1558,LM158,LM258,LM358

*Application Note 116 Use the LM158/LM258/LM358 Dual, Single Supply Op Amp*



Literature Number: SNOA662A

# Use the LM158/LM258/LM358 Dual, Single Supply Op Amp

## Introduction

Use the LM158/LM258/LM358 dual op amp with a single supply in place of the LM1458/LM1558 with split supply and reap the profits in terms of:

- Input and output voltage range down to the negative (ground) rail
- Single supply operation
- Lower standby power dissipation
- Higher output voltage swing
- Lower input offset current
- Generally similar performance otherwise

The main advantage, of course, is that you can eliminate the negative supply in many applications and still retain equivalent op amp performance. Additionally, and in some cases more importantly, the input and output levels are permitted to swing down to ground (negative rail) potential. *Table 1* shows the relative performance of the two in terms of guaranteed and/or typical specifications.

National Semiconductor  
Application Note 116  
August 1980



In many applications the LM158/LM258/LM358 can also be used directly in place of LM1558 for split supply operation.

## Single Supply Operation

The LM1458/LM1558 or similar op amps exhibit several important limitations when operated from a single positive (or negative) supply. Chief among these is that input and output signal swing is severely limited for a given supply as shown in *Figure 1*. For linear operation, the input voltage must not reach within 3 volts of ground or of the supply, and output range is similarly limited to within 3–5 volts of ground or supply. This means that operation with a +12V supply could be limited as low as 2 Vp-p output swing. The LM358 however, allows a 10.5 Vp-p output swing for the same 12V supply. Admittedly these are worst case specification limits, but they serve to illustrate the problem.

TABLE 1. Comparison of Dual Op Amps LM1458 and LM358

Characteristic	LM1458	LM358
$V_{IO}$	6 mV Max	7 mV Max
CM $V_I$	24 Vp-p*	0–28.5V*
$I_{IO}$	200 nA	50 nA
$I_{OB}$	500 nA	–500 nA
CMRR	60 dB Min @ 100 Hz 90 dB Typ	85 dB Typ @ DC
$\bar{e}_n$ @ 1 kHz, $R_{GEN}$ 10 k $\Omega$	45 nV/ $\sqrt{Hz}$ Typ	40 nV/ $\sqrt{Hz}$ Typ**
$Z_{IN}$	200 M $\Omega$ Typ	Typ 100 M $\Omega$
$A_{VOL}$	20k Min 100k Typ	100k Typ
$f_c$	1.1 MHz Typ	1 MHz Typ **
$P_{BW}$	14 kHz Typ	11 kHz Typ **
$dV_o/dt$	0.8V/ $\mu$ s Typ	0.5V/ $\mu$ s Typ**
$V_o$ @ $R_L = 10k/2k$	24/20 Vp-p*	28.5 Vp-p
$I_{SC}$	20 mA Typ	Source 20 mA Min (40 Typ) Sink 10 mA Min (20 Typ)
PSRR @ DC	37 dB Min 90 dB Typ	100 dB Typ
$I_D$ ( $R_L = \infty$ )	8 mA Max	2 mA Max

‡From laboratory measurement

\*Based on  $V_S = 30V$  on LM358 only, or  $V_S = \pm 15V$

\*\*From data sheet typical curves

## Single Supply Operation (Continued)

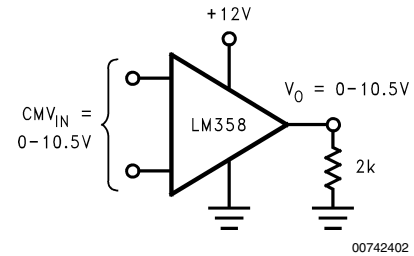
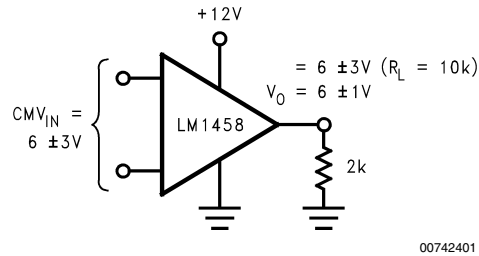


FIGURE 1. Worst Case Signal Levels with +12V Supply

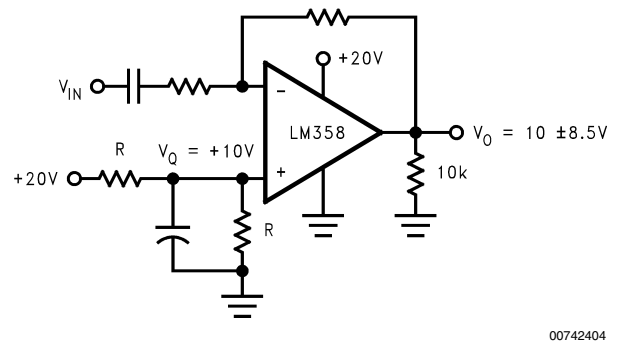
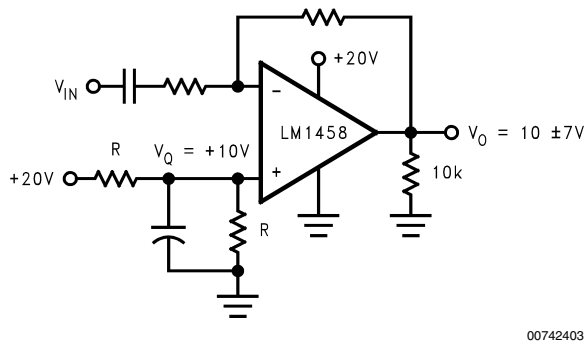


FIGURE 2. Operating with AC Signals

### AC Gain

For AC signals the input can be capacitor coupled. The input common mode and quiescent output voltages are fixed at one-half the supply voltage by a resistive divider at the non-inverting input as shown in *Figure 2*. This quiescent output could be set at a lower voltage to minimize power dissipation in the LM358, if desired, so long as  $V_Q \geq V_{IN}$  pk. For the LM1458 the quiescent output must be higher,  $V_Q \geq 3V + V_{IN}$  pk thus, for small signals, power dissipation is much greater with the LM1458. Example: Required  $V_O = V_Q \pm 1V$  pk into 2k,  $V_{SUPPLY} =$  as required. Find quiescent dissipation in load and amplifier for LM1458 and LM358.

#### LM358

$$\begin{aligned} V_Q &= +1V \\ V_{SUPPLY} &= +3.5V \\ P_{LOAD} &= \frac{E_L^2}{R_L} = \frac{1}{2k} = 0.5 \text{ mW} \\ P_D &= V_S I_S^* + (V_S - V_Q) I_L \\ &= 3.5V \times 0.7 \text{ mA} + (3.5 - 1) \frac{1V}{2k} \\ P_D &= 2.45 + 1.25 = 3.7 \text{ mW} \\ P_{TOTAL} &= 3.7 + 0.5 = 4.2 \text{ mW} \end{aligned}$$

\*From typical characteristics

#### LM1458

$$\begin{aligned} V_Q &= 4V \\ V_{SUPPLY} &= 8V \\ P_{LOAD} &= \frac{4^2}{2k} = 8 \text{ mW} \\ P_D &= P_D^* + (V_S - V_Q) I_L \\ &= 22 \text{ mW} + (8 - 4) \frac{4V}{2k} \\ P_D &= 22 + 8 = 30 \text{ mW} \\ P_{TOTAL} &= 30 + 8 = 38 \text{ mW} \end{aligned}$$

\*From typical characteristics

The LM1458 requires over twice the supply voltage and nearly 10 times the supply power of the LM358 in this application.

### Inverting DC Gain

Connections and biasing for DC inverting gain are essentially the same as for the AC coupled case. Note, of course, that the output cannot swing negative when operated from a single positive supply. *Figure 3* shows the connections and signal limitations.

## Non-Inverting DC Gain

The non-inverting gain connection does not require the  $V_O$  biasing as before; the inverting input can be returned to ground in the usual manner for gains greater than unity, (see Figure 4). A tremendous advantage of the LM358 in this connection is that input signals and output may extend all the way to ground; therefore DC signals in the low-millivolt range can be handled. The LM1458 still requires that  $V_{IN} = 3V-17V$ . Therefore maximum gain is limited to  $A_V = (V_O - 3)/3$ , or  $A_V \text{ max} = 5.4$  for a 20V supply.

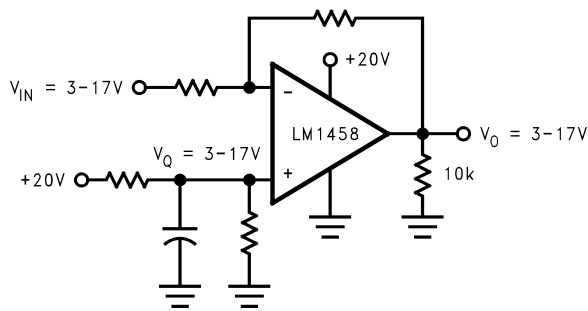
There is no similar limitation for the LM358.

## Zero T.C. Input Bias Current

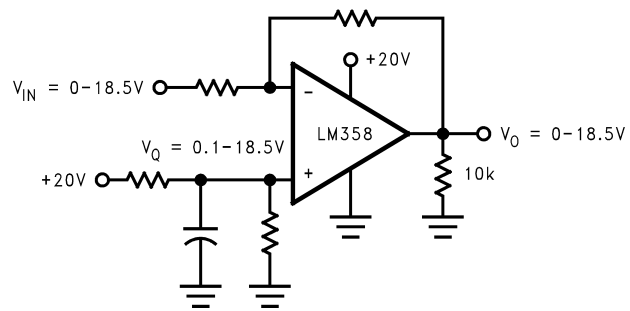
An interesting and unusual characteristic is that  $I_{IN}$  has a zero temperature coefficient. This means that matched resistance is not required at the input, allowing omission of one resistor per op amp from the circuit in most cases.

## Balanced Supply Operation

The LM358 will operate satisfactorily in balanced supply operation so long as a load is maintained from output to the negative supply.

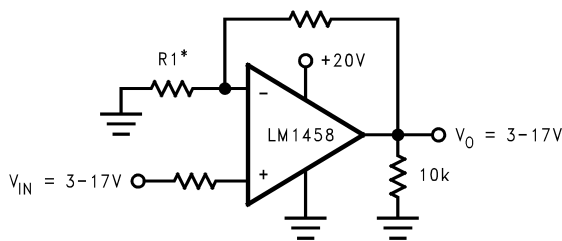


00742405



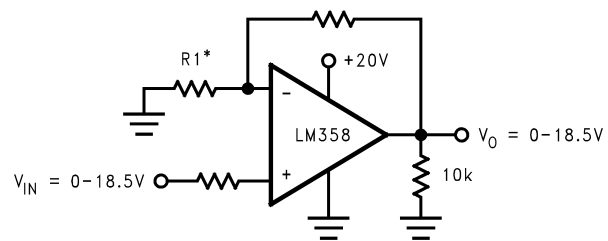
00742406

FIGURE 3. Typical DC Coupled Inverting Gain



\* $R1 = \infty$  for  $A_V = +1$   
 $A_V \leq 5.4$  for 20V Supply

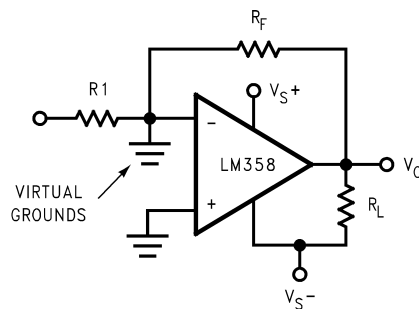
00742407



\* $R1 = \infty$  for  $A_V = +1$   
 $A_V$  not limited

00742408

FIGURE 4. Typical DC Coupled Non-Inverting Gain



Crossover (distortion) occurs at  $V_O = V_S - \frac{R_F}{R_L + R_F}$

00742409

FIGURE 5. Split Supply Operation of LM358

The output load to negative supply forces the amplifier to source some minimum current at all times, thus eliminating crossover distortion. Crossover distortion without this load

would be more severe than that expected with the normal op amp. Since the single supply design took notice of this normal load connection to ground, a class AB output stage

## Balanced Supply Operation

(Continued)

was not included. Where ground referenced feedback resistors are used as in *Figure 5*, the required load to the negative supply depends upon the peak negative output signal level desired without exhibiting crossover distortion.  $R_L$  to the negative rail should be chosen small enough that the voltage divider formed by  $R_F$  and  $R_L$  will permit  $V_o$  to swing negative to the desired point according to the equation:

$$R_L = R_F \frac{V_{\bar{S}} - V_o}{V_o}$$

$R_L$  could also be returned to the positive supply with the advantage that  $V_o$  max would never exceed  $(V_{S+} - 1.5V)$ . Then with  $\pm 15V$  supplies  $R_{L\text{ MIN}}$  would be  $0.12 R_F$ . The disadvantage would be that the LM358 can source twice as much current as it can sink, therefore  $R_L$  to negative supply can be one-half the value of  $R_L$  to positive supply.

The need for single or split supply is based on system requirements which may be other than op amp oriented. However if the only need for balanced supplies is to simplify the biasing of op amps, there are many systems which can find a cost effective benefit in operating LM358's from single supplies rather than standard op amps from balanced supplies. Of the usual op amp circuits, *Table 2* shows those few which have limited function with single supply operation. Most are based on the premise that to operate from a single supply, a reference  $V_Q$  at about one-half the supply be available for bias or (zero) signal reference. The basic circuits are those listed in AN-20.

**TABLE 2. Conventional Op Amp Circuits Suitable for Single Supply Operation**

Application	Limitations
AC Coupled amp‡	$V_Q^*$
Inverting amp	$V_Q$
Non-inverting amp	OK*
Unity gain buffer	OK
Summing amp	$V_Q$
Difference amp	$V_Q$
Differentiator	$V_Q$
Integrator	$V_Q$
LP Filter	$V_Q$
I-V Connector	$V_Q$
PE Cell Amp	OK
I Source	$I_{O\text{ MIN}} = \frac{1.5}{R1}$
I Sink	OK
Volt Ref	OK
FW Rectifier	$V_Q$ or modified circuit
Sine wave osc	$V_Q$
Triangular generator	$V_Q$
Threshold detector	OK
Tracking, regulator PS	Not practical
Programmable PS	OK
Peak Detector	OK to $V_{IN} = 0$

‡See AN-20 for conventional circuits

\* $V_Q$  denotes need for a reference voltage, usually at about  $\frac{V_S}{2}$   
OK means no reference voltage required

### LIFE SUPPORT POLICY

NATIONAL'S PRODUCTS ARE NOT AUTHORIZED FOR USE AS CRITICAL COMPONENTS IN LIFE SUPPORT DEVICES OR SYSTEMS WITHOUT THE EXPRESS WRITTEN APPROVAL OF THE PRESIDENT AND GENERAL COUNSEL OF NATIONAL SEMICONDUCTOR CORPORATION. As used herein:

1. Life support devices or systems are devices or systems which, (a) are intended for surgical implant into the body, or (b) support or sustain life, and whose failure to perform when properly used in accordance with instructions for use provided in the labeling, can be reasonably expected to result in a significant injury to the user.
2. A critical component is any component of a life support device or system whose failure to perform can be reasonably expected to cause the failure of the life support device or system, or to affect its safety or effectiveness.



**National Semiconductor Corporation**  
Americas  
Email: support@nsc.com

www.national.com

**National Semiconductor Europe**

Fax: +49 (0) 180-530 85 86  
Email: europe.support@nsc.com  
Deutsch Tel: +49 (0) 69 9508 6208  
English Tel: +44 (0) 870 24 0 2171  
Français Tel: +33 (0) 1 41 91 8790

**National Semiconductor Asia Pacific Customer Response Group**

Tel: 65-2544466  
Fax: 65-2504466  
Email: ap.support@nsc.com

**National Semiconductor Japan Ltd.**

Tel: 81-3-5639-7560  
Fax: 81-3-5639-7507

## IMPORTANT NOTICE

Texas Instruments Incorporated and its subsidiaries (TI) reserve the right to make corrections, modifications, enhancements, improvements, and other changes to its products and services at any time and to discontinue any product or service without notice. Customers should obtain the latest relevant information before placing orders and should verify that such information is current and complete. All products are sold subject to TI's terms and conditions of sale supplied at the time of order acknowledgment.

TI warrants performance of its hardware products to the specifications applicable at the time of sale in accordance with TI's standard warranty. Testing and other quality control techniques are used to the extent TI deems necessary to support this warranty. Except where mandated by government requirements, testing of all parameters of each product is not necessarily performed.

TI assumes no liability for applications assistance or customer product design. Customers are responsible for their products and applications using TI components. To minimize the risks associated with customer products and applications, customers should provide adequate design and operating safeguards.

TI does not warrant or represent that any license, either express or implied, is granted under any TI patent right, copyright, mask work right, or other TI intellectual property right relating to any combination, machine, or process in which TI products or services are used. Information published by TI regarding third-party products or services does not constitute a license from TI to use such products or services or a warranty or endorsement thereof. Use of such information may require a license from a third party under the patents or other intellectual property of the third party, or a license from TI under the patents or other intellectual property of TI.

Reproduction of TI information in TI data books or data sheets is permissible only if reproduction is without alteration and is accompanied by all associated warranties, conditions, limitations, and notices. Reproduction of this information with alteration is an unfair and deceptive business practice. TI is not responsible or liable for such altered documentation. Information of third parties may be subject to additional restrictions.

Resale of TI products or services with statements different from or beyond the parameters stated by TI for that product or service voids all express and any implied warranties for the associated TI product or service and is an unfair and deceptive business practice. TI is not responsible or liable for any such statements.

TI products are not authorized for use in safety-critical applications (such as life support) where a failure of the TI product would reasonably be expected to cause severe personal injury or death, unless officers of the parties have executed an agreement specifically governing such use. Buyers represent that they have all necessary expertise in the safety and regulatory ramifications of their applications, and acknowledge and agree that they are solely responsible for all legal, regulatory and safety-related requirements concerning their products and any use of TI products in such safety-critical applications, notwithstanding any applications-related information or support that may be provided by TI. Further, Buyers must fully indemnify TI and its representatives against any damages arising out of the use of TI products in such safety-critical applications.

TI products are neither designed nor intended for use in military/aerospace applications or environments unless the TI products are specifically designated by TI as military-grade or "enhanced plastic." Only products designated by TI as military-grade meet military specifications. Buyers acknowledge and agree that any such use of TI products which TI has not designated as military-grade is solely at the Buyer's risk, and that they are solely responsible for compliance with all legal and regulatory requirements in connection with such use.

TI products are neither designed nor intended for use in automotive applications or environments unless the specific TI products are designated by TI as compliant with ISO/TS 16949 requirements. Buyers acknowledge and agree that, if they use any non-designated products in automotive applications, TI will not be responsible for any failure to meet such requirements.

Following are URLs where you can obtain information on other Texas Instruments products and application solutions:

### Products

Audio	<a href="http://www.ti.com/audio">www.ti.com/audio</a>
Amplifiers	<a href="http://amplifier.ti.com">amplifier.ti.com</a>
Data Converters	<a href="http://dataconverter.ti.com">dataconverter.ti.com</a>
DLP® Products	<a href="http://www.dlp.com">www.dlp.com</a>
DSP	<a href="http://dsp.ti.com">dsp.ti.com</a>
Clocks and Timers	<a href="http://www.ti.com/clocks">www.ti.com/clocks</a>
Interface	<a href="http://interface.ti.com">interface.ti.com</a>
Logic	<a href="http://logic.ti.com">logic.ti.com</a>
Power Mgmt	<a href="http://power.ti.com">power.ti.com</a>
Microcontrollers	<a href="http://microcontroller.ti.com">microcontroller.ti.com</a>
RFID	<a href="http://www.ti-rfid.com">www.ti-rfid.com</a>
OMAP Mobile Processors	<a href="http://www.ti.com/omap">www.ti.com/omap</a>
Wireless Connectivity	<a href="http://www.ti.com/wirelessconnectivity">www.ti.com/wirelessconnectivity</a>

### Applications

Communications and Telecom	<a href="http://www.ti.com/communications">www.ti.com/communications</a>
Computers and Peripherals	<a href="http://www.ti.com/computers">www.ti.com/computers</a>
Consumer Electronics	<a href="http://www.ti.com/consumer-apps">www.ti.com/consumer-apps</a>
Energy and Lighting	<a href="http://www.ti.com/energy">www.ti.com/energy</a>
Industrial	<a href="http://www.ti.com/industrial">www.ti.com/industrial</a>
Medical	<a href="http://www.ti.com/medical">www.ti.com/medical</a>
Security	<a href="http://www.ti.com/security">www.ti.com/security</a>
Space, Avionics and Defense	<a href="http://www.ti.com/space-avionics-defense">www.ti.com/space-avionics-defense</a>
Transportation and Automotive	<a href="http://www.ti.com/automotive">www.ti.com/automotive</a>
Video and Imaging	<a href="http://www.ti.com/video">www.ti.com/video</a>

TI E2E Community Home Page

[e2e.ti.com](http://e2e.ti.com)

Mailing Address: Texas Instruments, Post Office Box 655303, Dallas, Texas 75265  
Copyright © 2011, Texas Instruments Incorporated