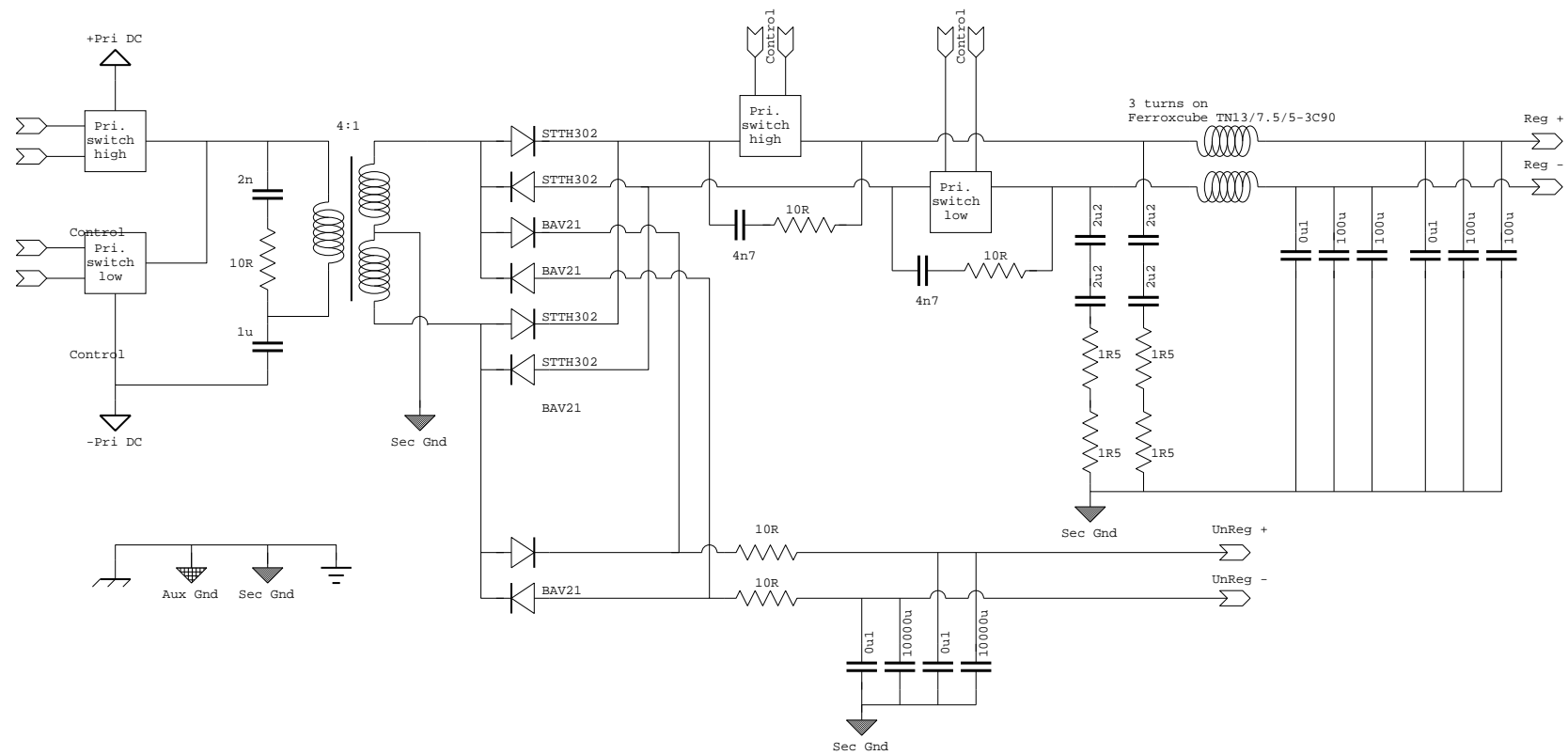
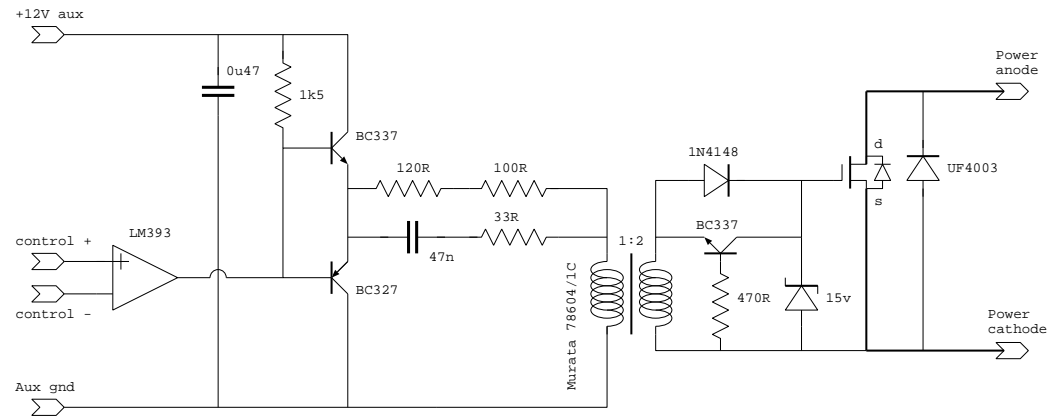
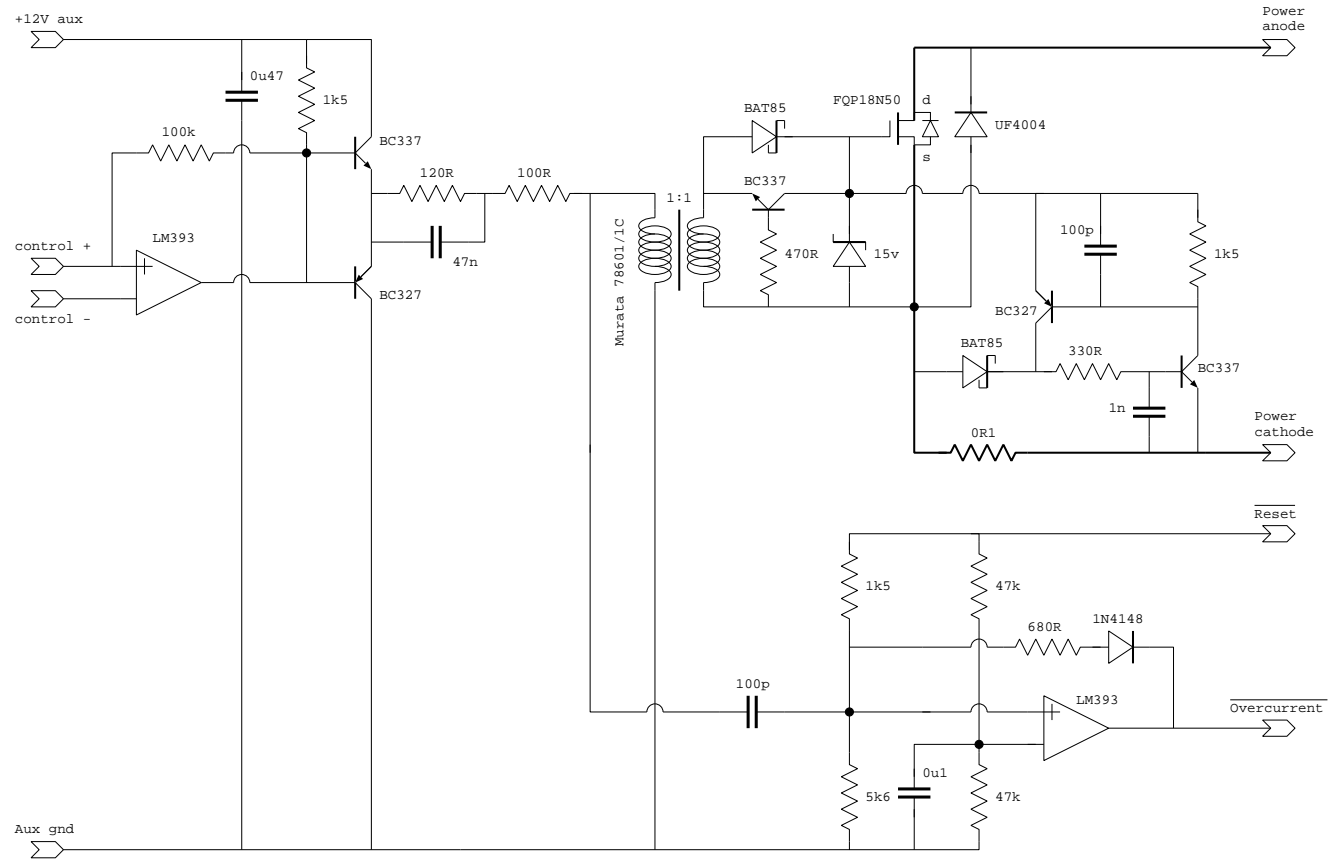


Sheet 2: Power ckts
Sept 23 2012



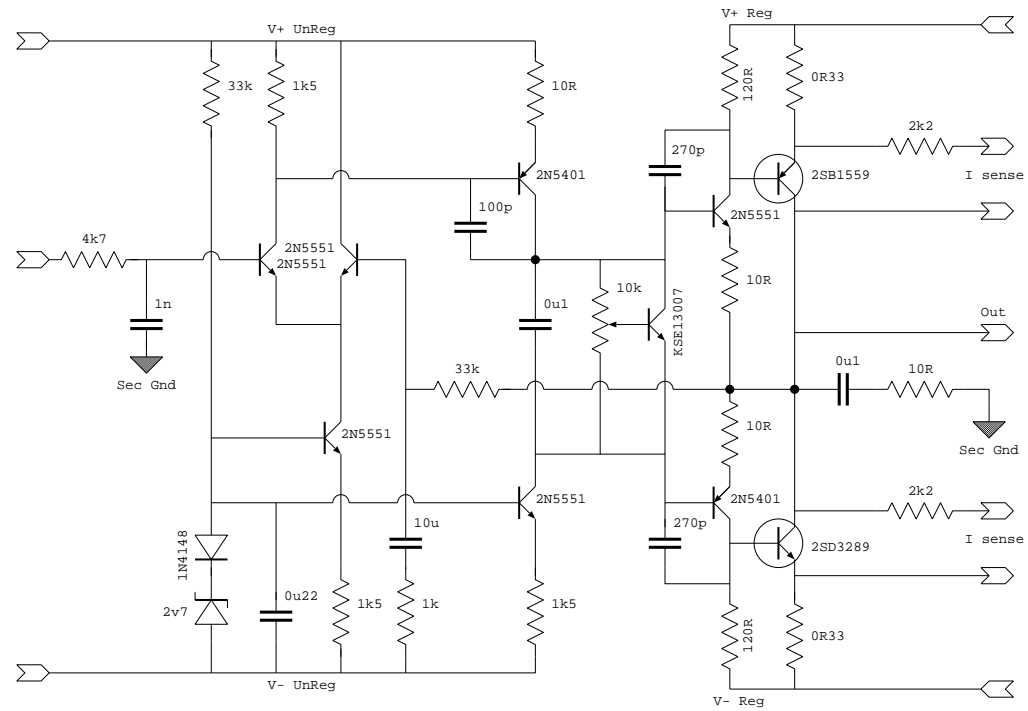


Sheet 4: Primary switch
Sept 16 2012



Sheet 5: Linear section 1
Aug 13 2012

PSRR/noise breakthrough still a problem.
A revised version with o/p devices coupled E to E was tested;
this showed improved rejection but is not documented.



Sheet 6: Linear section 2
Aug 13 2012

Shows good rejection of noise but is operating at higher dropout voltages
and requires additional components to insure Vreg does not drop within
+/-12v of Gnd.

