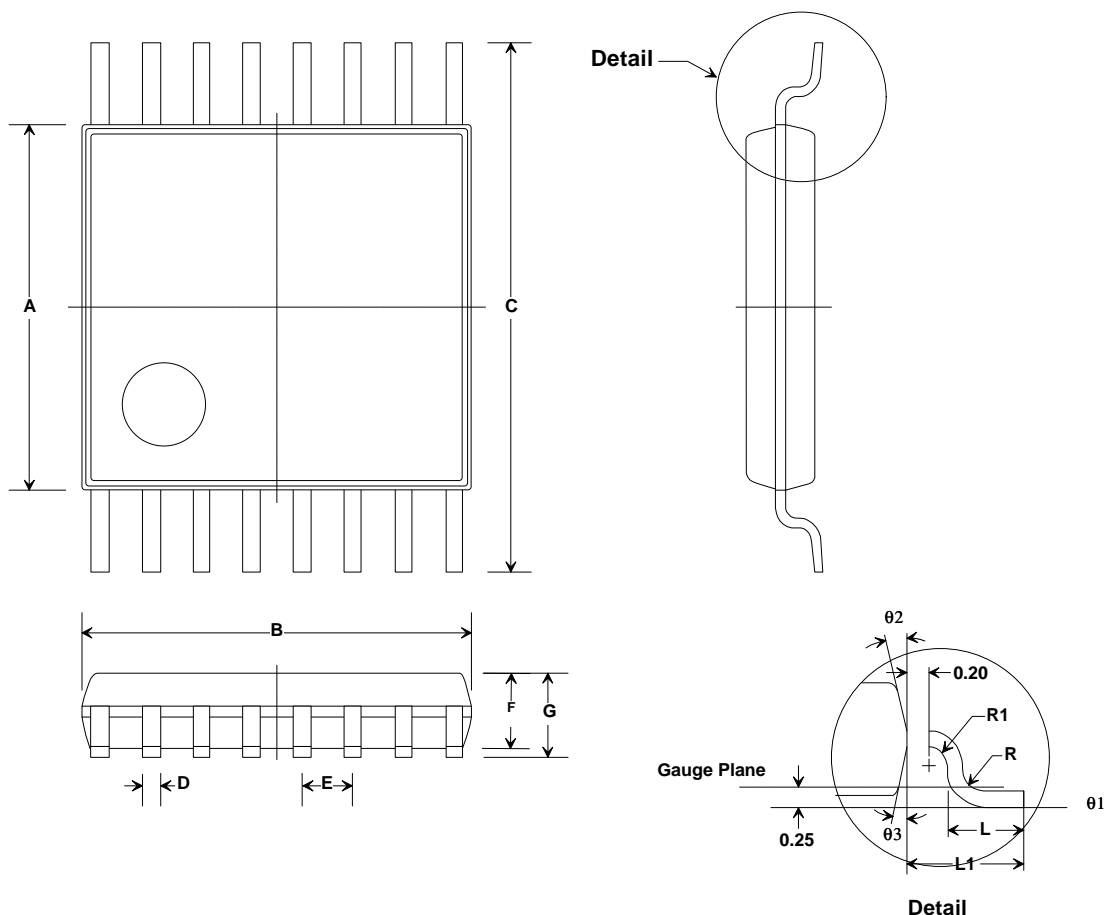


## 16-Pin Ceramic Case 6.4 X 5.0 mm Nominal Footprint

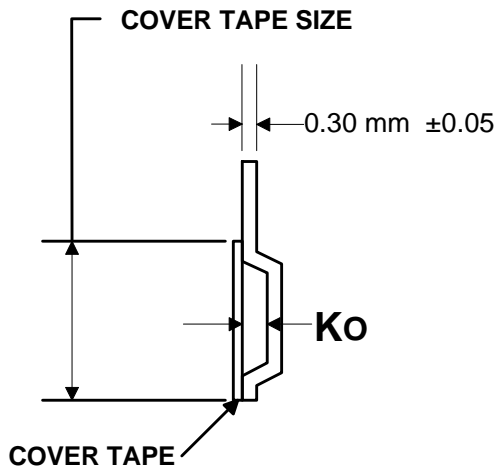
Case Dimensions

Dimension	mm			Inches		
	Min	Nom	Max	Min	Nom	Max
A	4.30	4.40	4.50	0.169	0.173	0.177
B	4.90	5.00	5.10	0.193	0.197	0.201
C	6.40 BSC.			0.252 BSC.		
D	0.19		0.30	0.007		0.012
E	0.65 BSC.			0.026 BSC.		
F	0.80	0.90	1.05	0.031	0.035	0.041
G			1.20			0.047
L	0.50	0.60	0.75	0.020	0.024	0.030
L1	1.00 REF.			0.39 REF.		
R	0.09			0.004		
R1	0.09			0.004		
Ø1	0		8	0		8
Ø2	12 REF.			12 REF.		
Ø3	12 REF.			12 REF.		

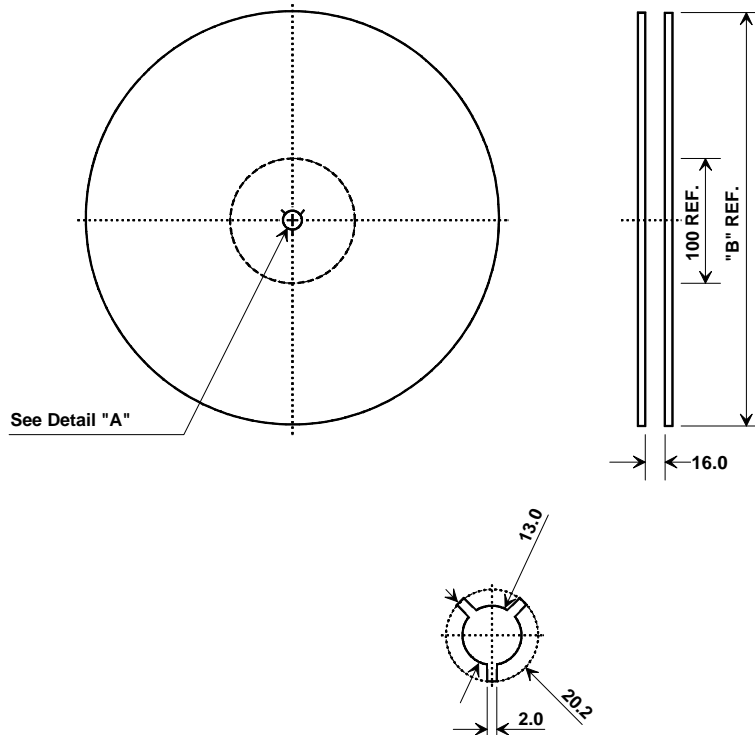


RF Monolithics, Inc. Fax: (972) 387-8148  
RFM Europe Phone: 44 1963 251383  
©1999 by RF Monolithics, Inc. The stylized RFM logo are registered trademarks of RF Monolithics, Inc.

Carrier Tape Dimensions	
	6.80
<b>Bo</b>	5.40
<b>Ko</b>	1.60
<b>F</b>	7.5 ± 0.1
<b>Pitch (P1)</b>	8.00
<b>W</b>	16.0 ± 0.3



# TSSOP-16 Package



"B"		Quantity Per Reel
Inches	millimeters	
13	330	2000
Tape and Reel Standard Per ANSI / EIA 481		