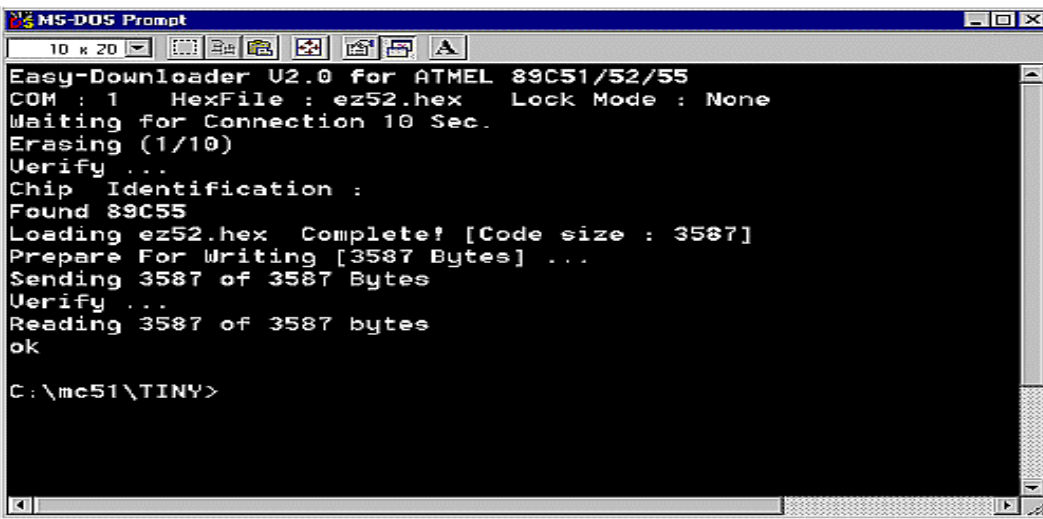


Example of using ez2 is shown in Figure

3



```
MS-DOS Prompt
10 K 20
Easy-Downloader U2.0 for ATME1 89C51/52/55
COM : 1   HexFile : ez52.hex   Lock Mode : None
Waiting for Connection 10 Sec.
Erasing (1/10)
Verify ...
Chip Identification :
Found 89C55
Loading ez52.hex Complete! [Code size : 3587]
Prepare For Writing [3587 Bytes] ...
Sending 3587 of 3587 Bytes
Verify ...
Reading 3587 of 3587 bytes
ok
C:\mc51\TINY>
```

Figure 3: Example of Using ez2, DOS version Uploader

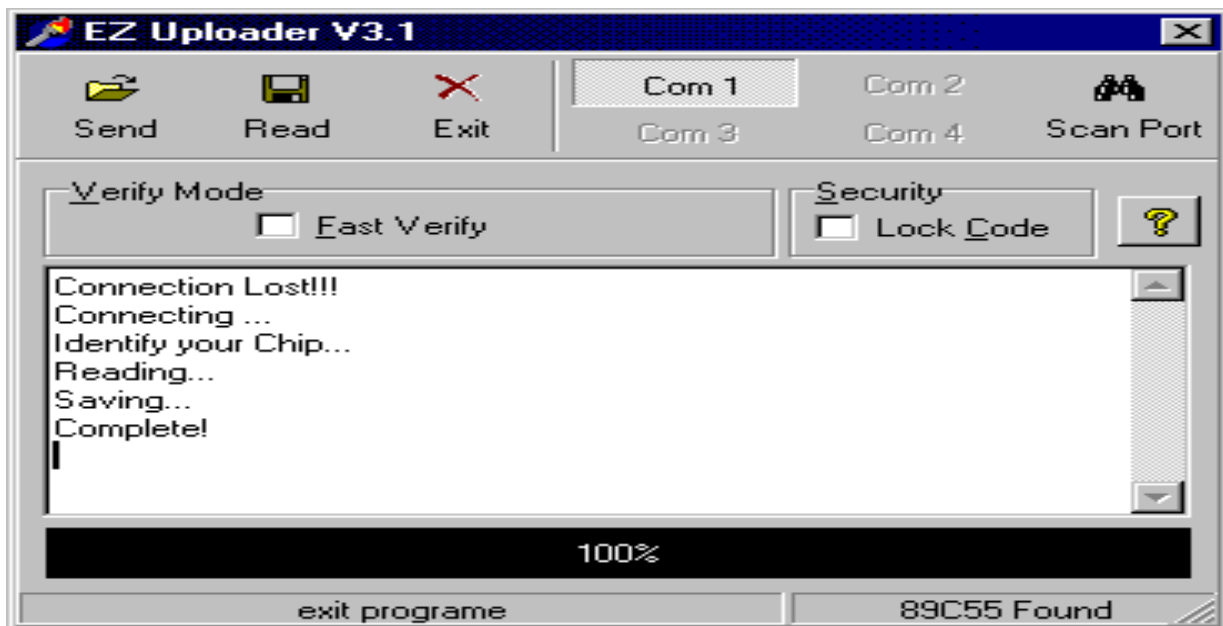
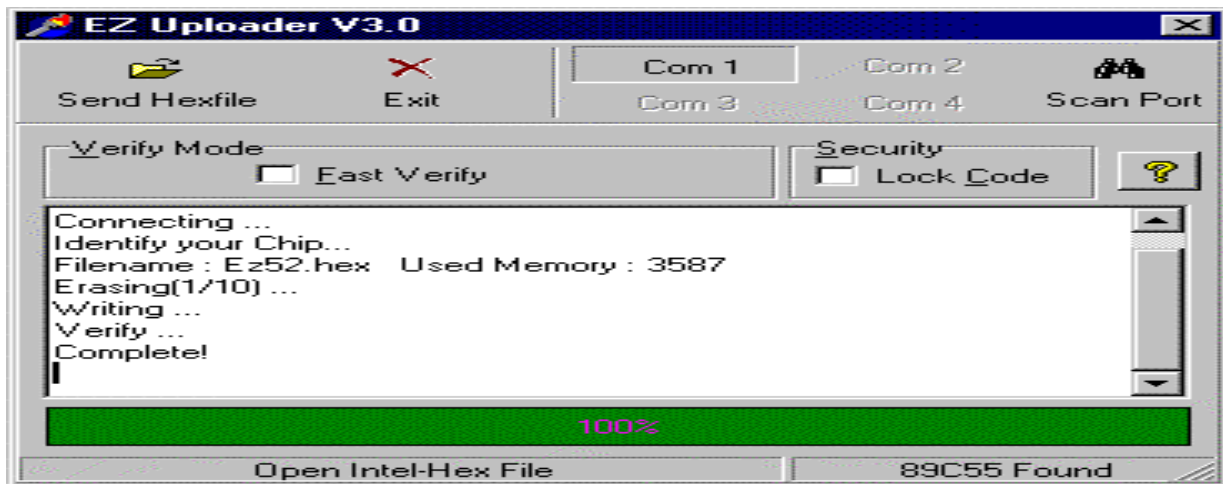


Figure 4: Example of Using EZ3 and EZ3.1